

The Architecture of Distributed Morphology

Jochen Trommer

`jtrommer@uni-leipzig.de`

Universität Leipzig
Institut für Linguistik

Distributed Morphology – WS 2009/2010

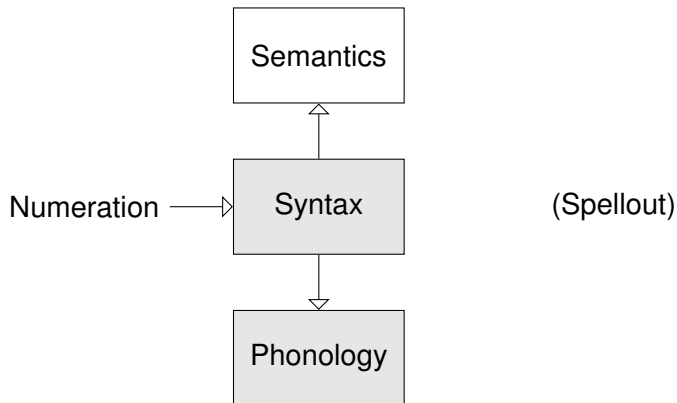
Overview

Architecture of the Grammar

Representations

Vocabulary Insertion

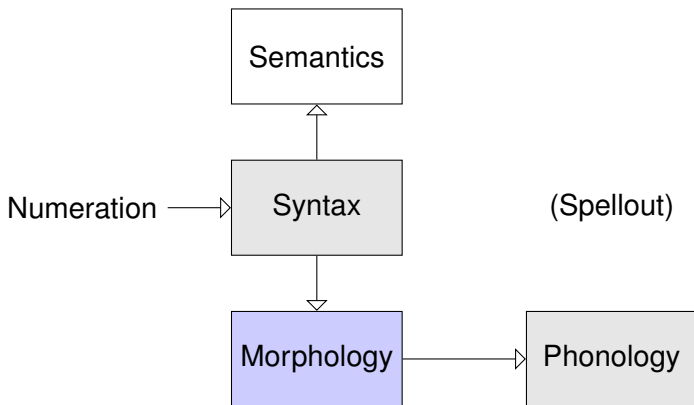
Minimalist Architecture



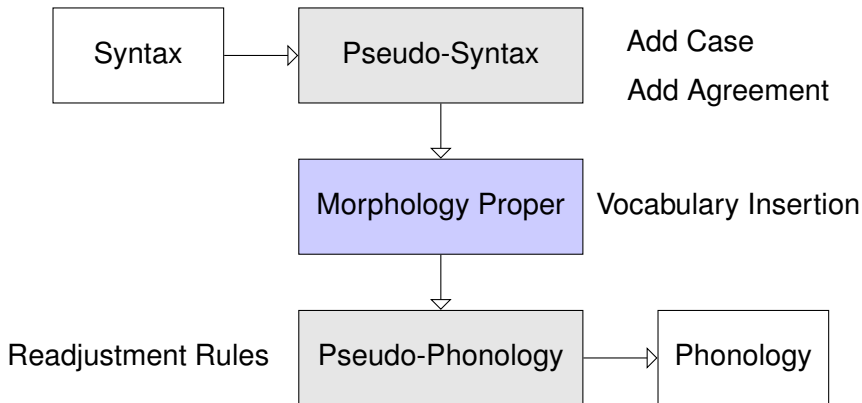
Role of Morphology in Distributed Morphology

- ▶ Syntax manipulates abstract heads without phonological content
- ▶ Morphology interprets the output of Syntax

Architecture of Distributed Morphology



Internal Structure of Morphology in DM



An Example (Albanian)

Unë-Ø

I-Nom

shkro-v-a

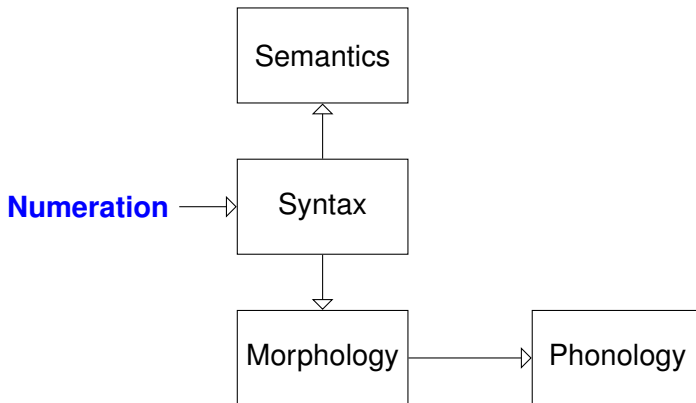
write-AOR-1 SG

Kurt-i-t

Kurt-DEF-DAT

'I wrote to Kurt'

Step 1



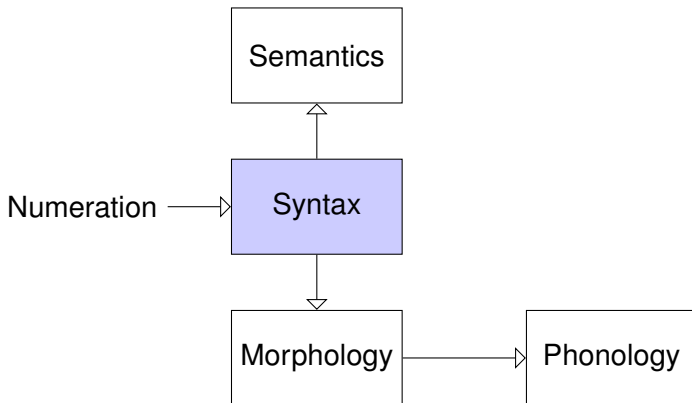
Step 1: Numeration

$$\begin{bmatrix} +\text{Det} \\ +1 \\ -\text{pl} \end{bmatrix} \quad \begin{bmatrix} +\text{Tense} \\ +\text{Aor} \end{bmatrix} \quad \begin{bmatrix} +\text{Det} \\ +3 \\ -\text{pl} \end{bmatrix}$$

$\sqrt{\textit{write}}$ $\sqrt{\textit{Kurt}}$

[+v] [+n]

Step 2



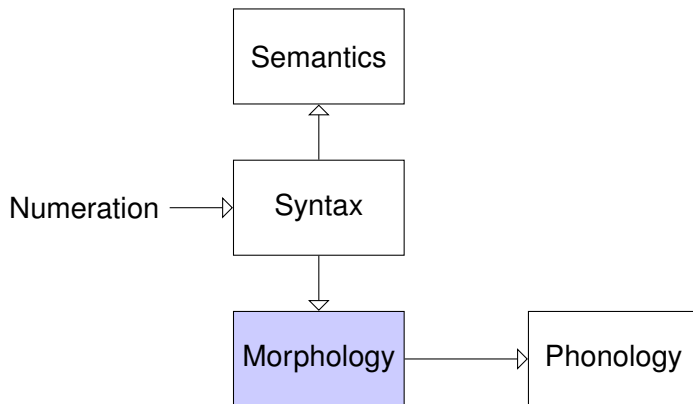
Step 2: Syntax

[+D+1-pl]

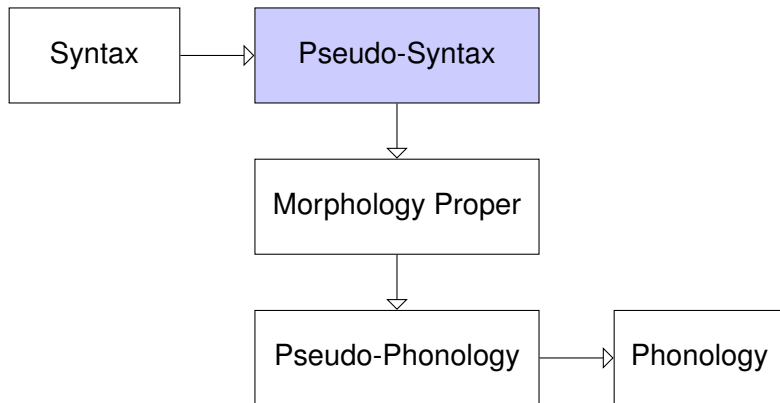
(($\sqrt{\textit{write}}$ [+v]) [+Tns +Aor])

(($\sqrt{\textit{Kurt}}$ [+n]) [+D +3 -pl])

Step 3



Step 3



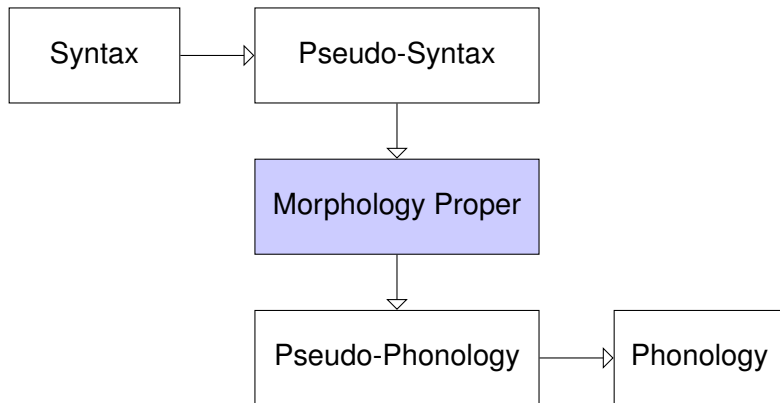
Step 3: Pseudo-Syntax

[+D+1-pl]

(($\sqrt{\textit{write}}$ [+v]) ([+Tns +Aor][**+Agr +1 -pl**]))

(($\sqrt{\textit{Kurt}}$ [+n]) [+D +3 -pl])[**+Case +Dat**])

Step 4



Step 4: Vocabulary Items

/unë/ ↔ [+D +1 -pl]

/-i/ ↔ [+D +3 -pl]

/-v/ ↔ [+Tense +Aor]

/-a/ ↔ [+Agr +1 -pl]

/shkrua/ ↔ $\sqrt{\text{write}}$ /_____ [+v]

/kurt/ ↔ $\sqrt{\text{Kurt}}$ /_____ [+n]

Step 4: Morphology Proper (Vocabulary Insertion)

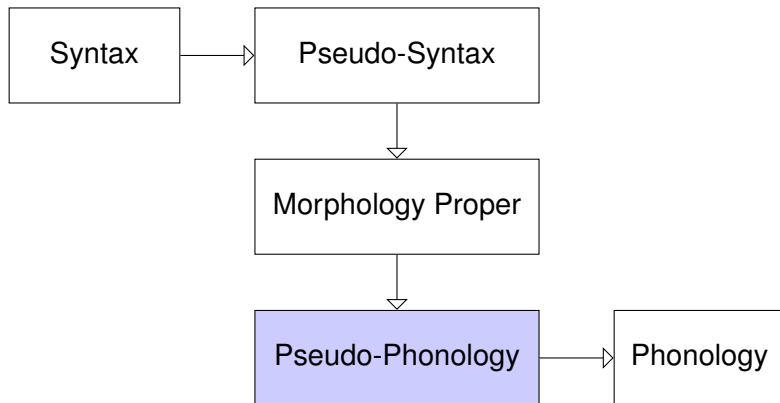
[+D+1-pl]

/unë/

(($\sqrt{\text{write}}$ [+v]) ([+Tns +Aor] [+Agr +1 -pl]))
/shkrua/ **/v/** **/a/**

(($\sqrt{\text{Kurt}}$ [+n]) [+D +3 -pl]) [+Case +Dat])
/kurt/ **/i/** **/t/**

Step 5



Step 5: Pseudo-Phonology

[+D+1-pl]

/unë/

(cf. *shkrua-j-a*, 'I wrote (Impf.)')

(($\sqrt{\text{write}}$

[+v])

([+Tns +Aor]

[+Agr +1 -pl]))

/shkrua/

/v/

/a/

/shkro/

(($\sqrt{\text{Kurt}}$

[+n])

[+D +3 -pl])

[+Case +Dat])

/kurt/

/i/

/t/

Why is it called ‘Distributed Morphology’

- ▶ Structure Building in Syntax
- ▶ Phonological Spellout in Morphology
- ▶ Morphology is Distributed
across different Modules of Grammar

Arguments for Late Insertion

- ▶ Syntax is not sensitive to phonological features of morphological items
- ▶ Avoids duplication of structure building
- ▶ Predictions for Affix Order (Julien, 2000; Trommer, 2001)
- ▶ Allomorphy is sensitive to syntactic context (Trommer, 2001)
- ▶ Morphological Underspecification