

Konsonanten

Jochen Trommer

`jtrommer@uni-leipzig.de`

Universität Leipzig
Institut für Linguistik

Phonetikanalyse – SS 2007

Uvulare Plosive

Dental, velar and uvular stops in Aleut

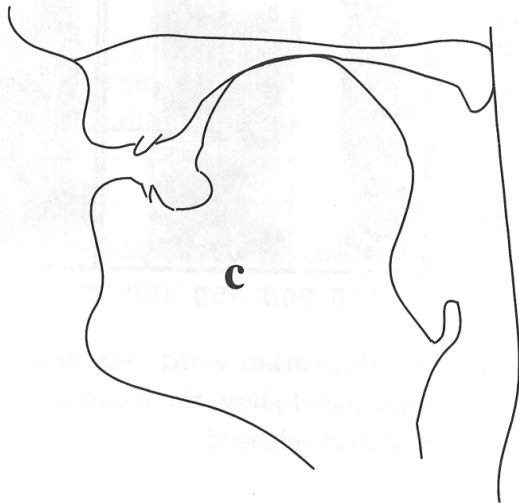
DENTAL	VELAR	UVULAR
<i>tiista</i> χ	<i>kiika</i> χ	<i>qiigha</i> χ
ti:staχ	ki:kaχ	qi:ʔaχ
'dough'	'cranberry bush'	'grass'
<i>taanga</i> χ	<i>kaangu</i> χ	<i>qaadan</i>
ta:ŋaχ	ka:ŋuχ	qa:ðan
'water'	'healthy'	'dolly varden' (fish)

Palatale Plosive

Palatals in Hungarian

	VOICELESS STOP	VOICED STOP	NASAL
INITIAL	tyúk ɕ 'hen'	gyújt ʝ 'he ignites'	nyújt ɟ 'he reaches'
BETWEEN VOWELS	atya ɕɕ 'gather'	agya ɕʝ 'his brain'	anya ɕɟ 'mother'

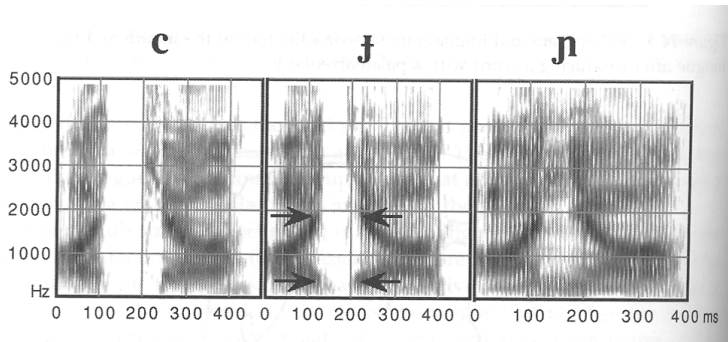
Produktion von palatalen Plosive



Palatale Plosive im Spektrogramm haben einen ...

- ▶ niedrigen ersten Formanten
- ▶ hohen zweiten Formanten

Palatale Plosive im Spektrogramm

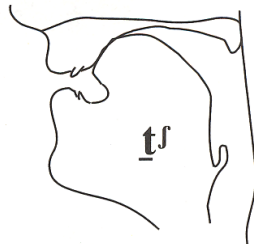
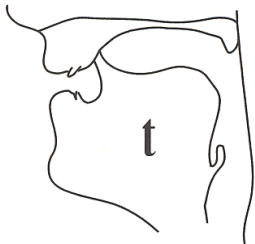
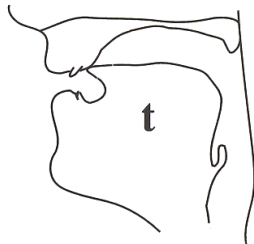
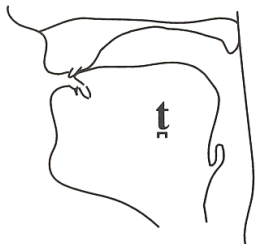


Koronale Plosive

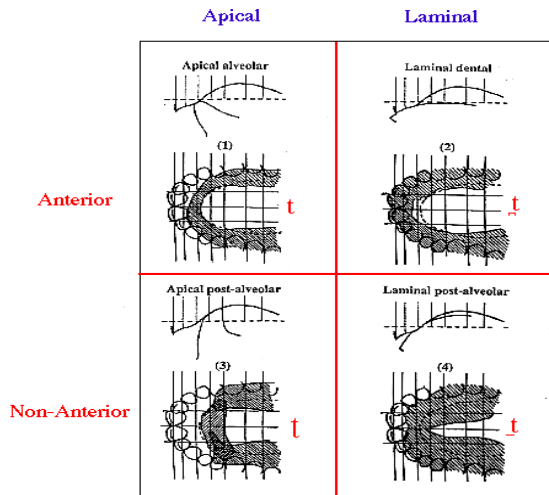
Dental and alveolarstops in Nunggubuyu

DENTAL	ALVEOLAR	RETROFLEX	POST- ALVEOLAR
ᵀarag	tarawa	ᵀakowa	ᵀʃaro
'whiskers'	'greedy'	'prawn'	'needle'

Produktion von koronalen Plosiven

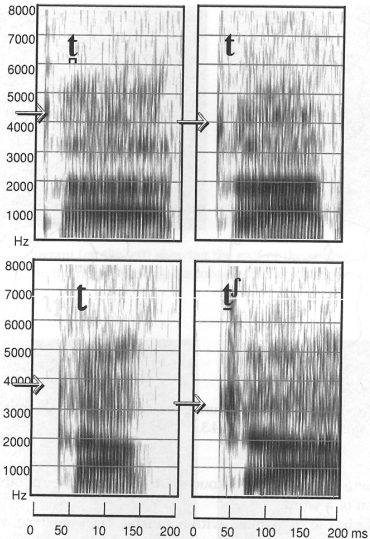


Klassifikation von koronalen Plosiven

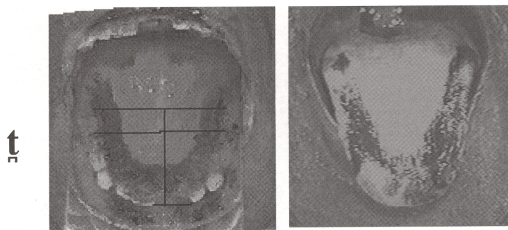
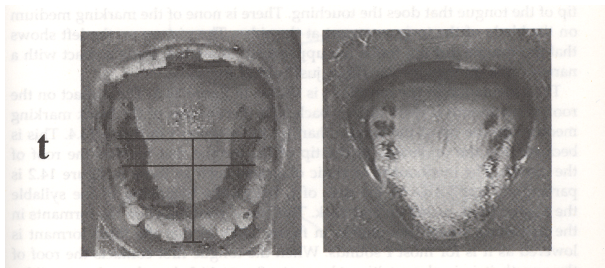


(http://www.ling.yale.edu:16080/ling120/Constriction_Location/Eastern_Arrernte.gif)

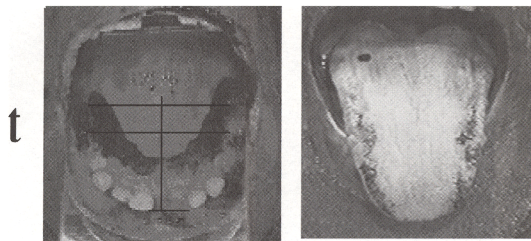
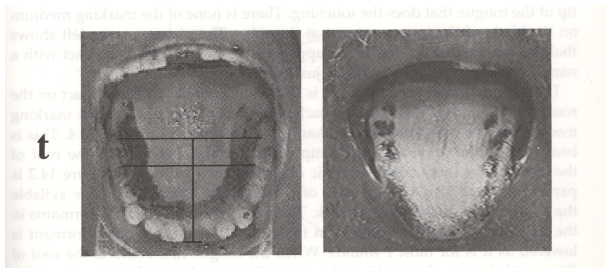
Koronale Plosive im Spektrogramm



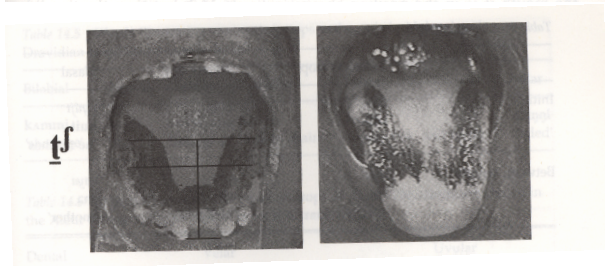
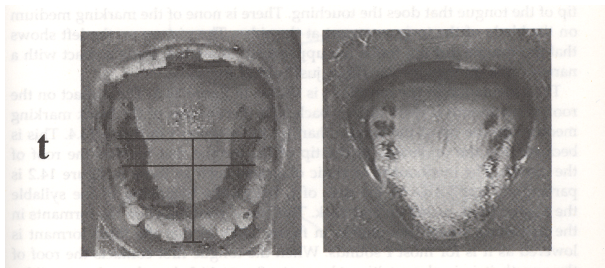
Alveolare vs. dentale Plosive



Alveolare vs. retroflexe Plosive



Alveolare vs. postalveolare Plosive

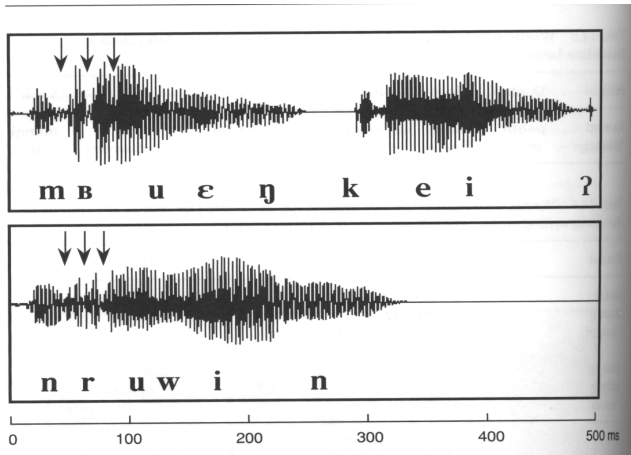


Bilabiale Vibranten

Bilabial and alveolar trills in Kele and Titan.

	KELE		TITAN	
BILABIAL	m ^B ueŋkei? 'fruit' (species)	m ^B ulim 'face'	m ^B ulei 'rat'	m ^B utukei 'wooden plate'
ALVEOLAR	n ^r uwin 'bone'	n ^r ikei 'leg'	n ^r uli? 'sandpiper'	n ^r akei?in 'girls'

Bilabiale Vibranten im Oszillogramm



Frikative

Some contrasting fricatives in Ewe

	BILABIAL	LABIODENTAL
VOICELESS	éɸá 'he polished'	éɸá 'he was cold'
	éɸle 'he bought'	éɸlé 'he split off'
VOICED	èβè 'Ewe' (language)	èvè 'two'
	èβló 'mushroom'	éɸvlo 'he is evil'

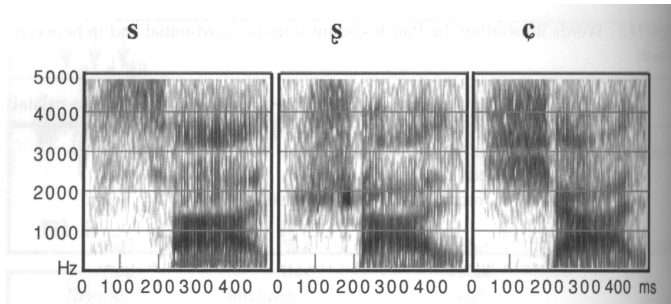
Frikative

Polish sibilant fricatives

Polish

	Alveolar	Post-Alveolar	Alveolopalatal
Initial	sali 'room' [gen.]	śali 'scale' [gen.]	ćali 'sowed'
	zalef 'bay'	żali 'complaints' [gen.]	źali 'gasped'
Medial	kasa 'box-office'	kaśa 'groats'	kaćaś 'burglar'
	skaza 'flaw'	gaża 'salary'	każa (name) [gen.]

Polnische Sibilanten im Spektrogramm



Laterale

Melpa laterals

	DENTAL	ALVEOLAR	VELAR
MEDIAL	kial̥tim 'fingernail'	lola 'speak improperly'	pala 'fence'
FINAL (VOICELESS)	wḁt̥ 'knitted bag'	bḁt̥ 'apron'	jḁl̥ 'two'

Clicks

- ▶ Doppelter Verschluss:
Dorsum-Velum und Lippe oder Zungen-Spitze/-Blatt
- ▶ Absenken der Zunge & Verschluss-Öffnung
bewirkt Einsaugen der Luft
- ▶ Weiterer nicht-pulmonaler Luftstrom-Mechanismus
neben Ejektiven & Implosiven

Clicks

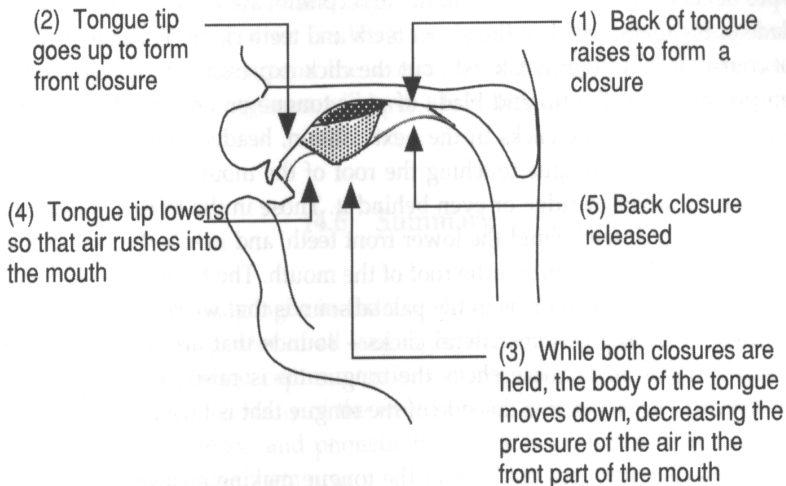
Clicks in Nama

[Nama greetings \(small.mp3; 470K\)](#) [Nama greetings \(large.wav; 4500K\)](#)

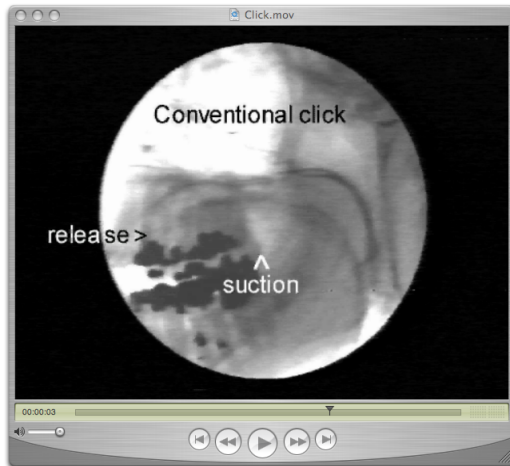
(All these words have a high tone)

	DENTAL	ALVEOLAR	PALATAL	ALVEOLAR LATERAL
VOICELESS UNASPIRATED	k oa 'put into'	k!oas 'hollow'	kɰais 'calling'	k aros 'writing'
VOICELESS ASPIRATED	kʰo 'play music'	kʰoas 'belt'	kɰʰaris 'small one'	kʰnos 'strike'
VOICELESS NASAL	ɰ ʰo 'push into'	ɰʰoas 'narrating'	ɰɰʰais 'baboon's arse'	ɰ ʰaos 'cooking place'
VOICED NASAL	ŋ o 'measure'	ŋ!oras 'pluck maize'	ŋɰais 'turtle dove'	ŋ aes 'pointing'
GLOTTAL CLOSURE	k ʔoa 'sound'	k!ʔoas 'meeting'	kɰʔais 'gold'	k ʔaos 'reject a present'

Produktion von Clicks



Click-Film



Luftstrom-Mechanismen

	egressiv	ingressiv
pulmonal	pulmonale Laute	
glottal	Ejektive	Implosive
oral		Clicks