

SORPIC

6 May Polar 5 Flight

Christophe Gurbeyre, Jean – François Gayet and Régis Dupuy

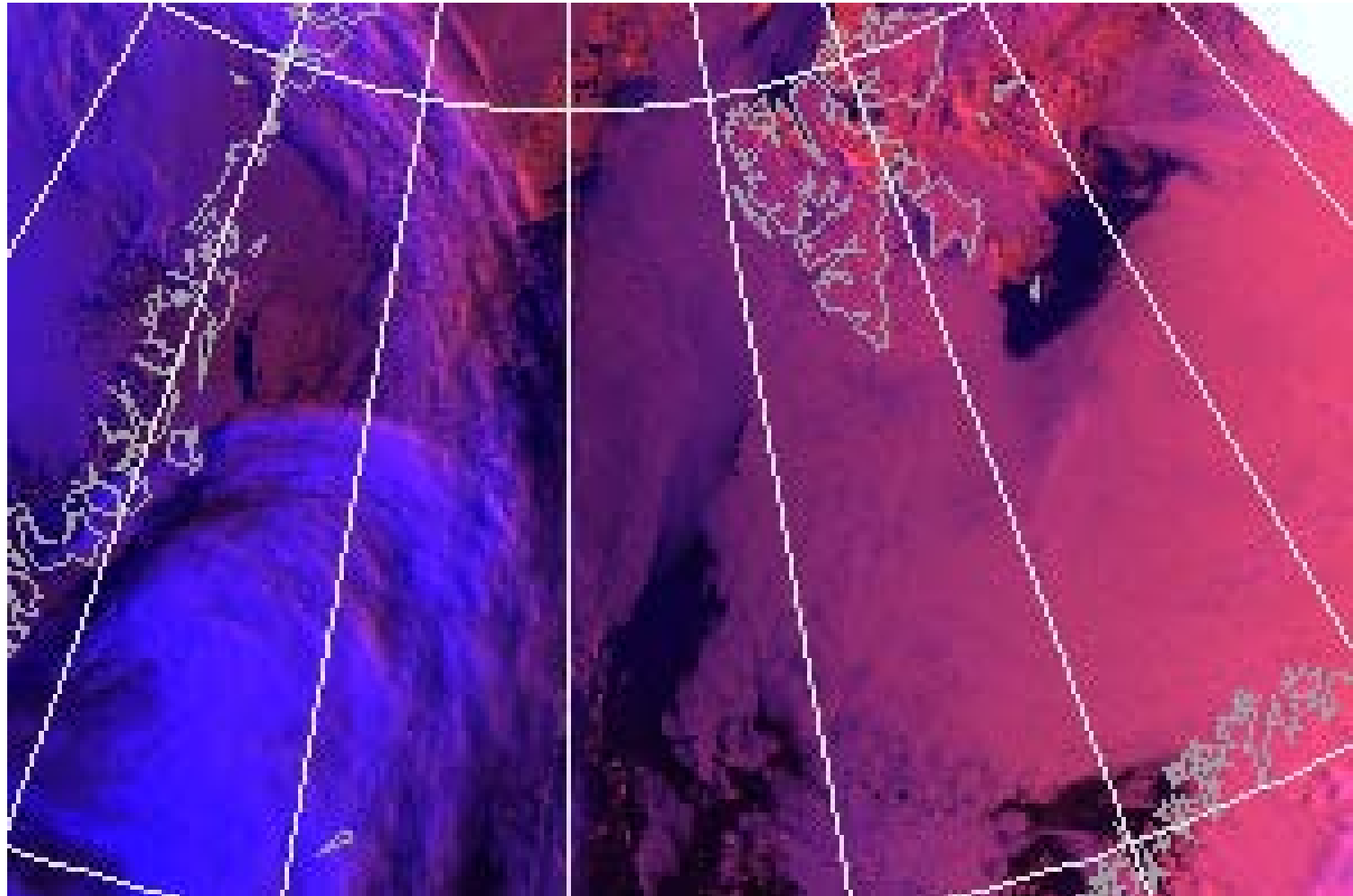
LaMP CNRS / Université Blaise Pascal



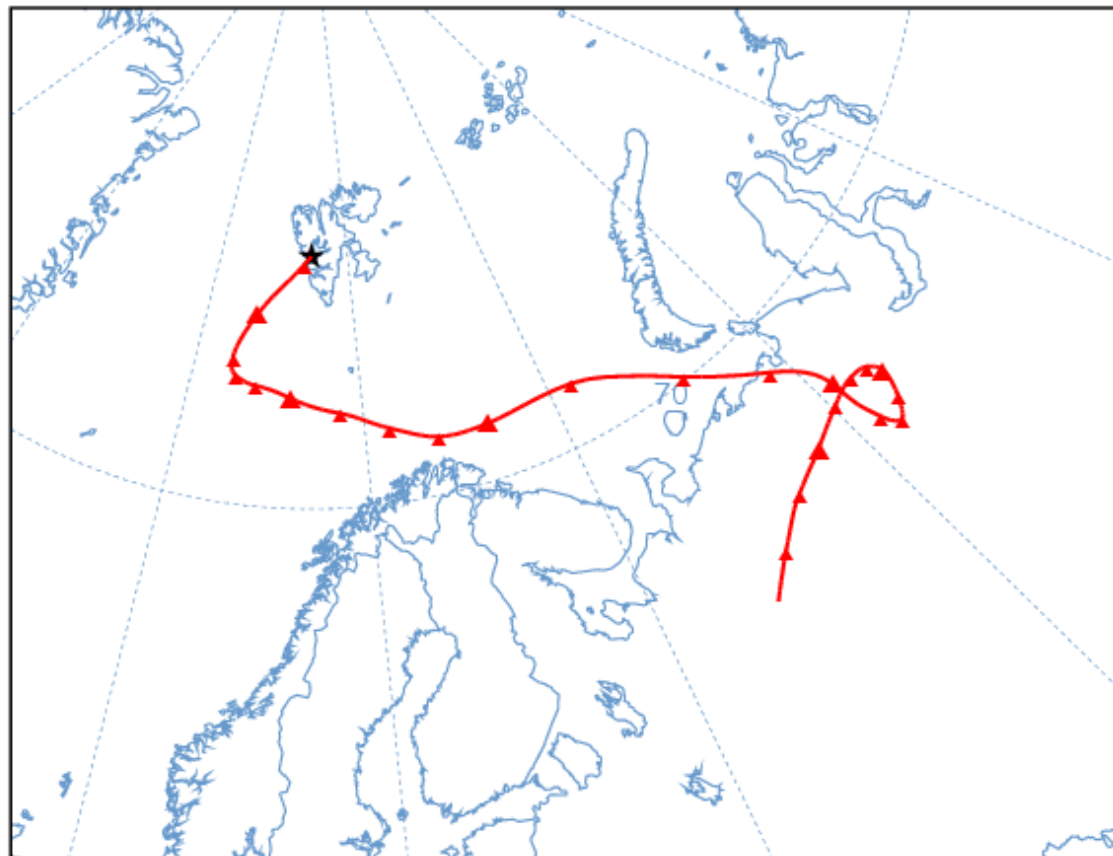
MODIS : AQUA



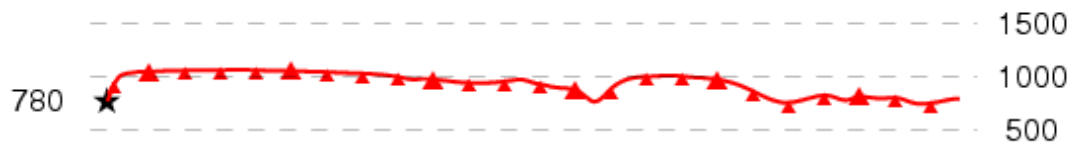
NOAA at 6:58 TU



Source ★ at 78.18 N 14.26 E



Meters AGL



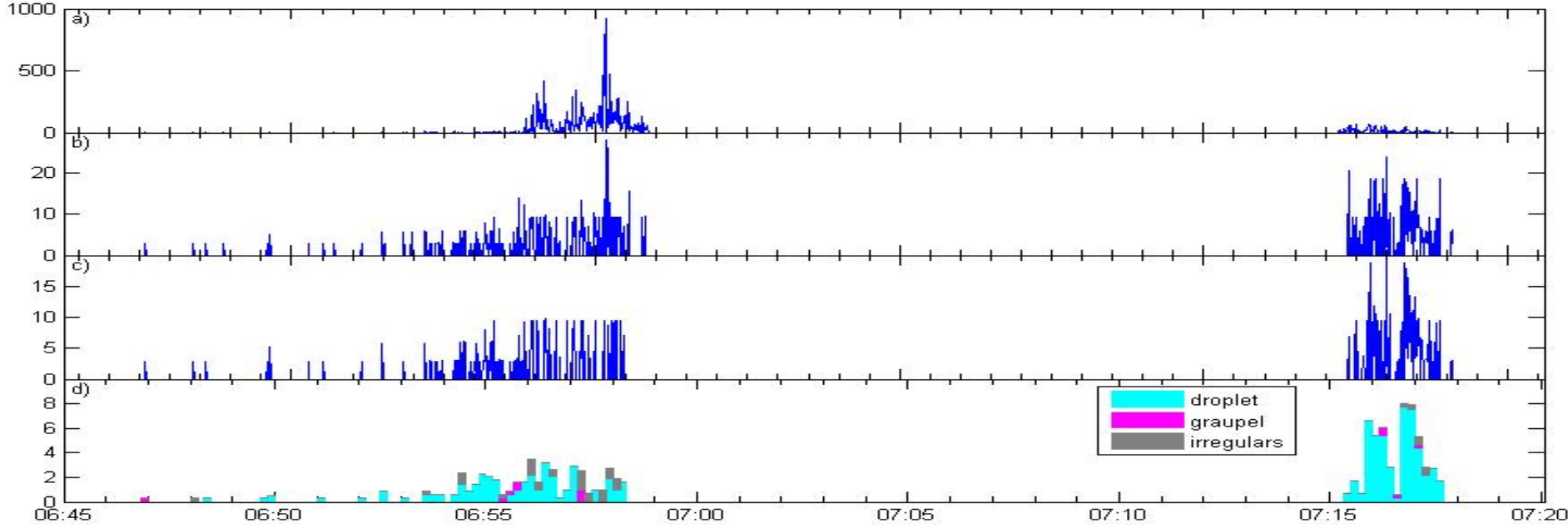
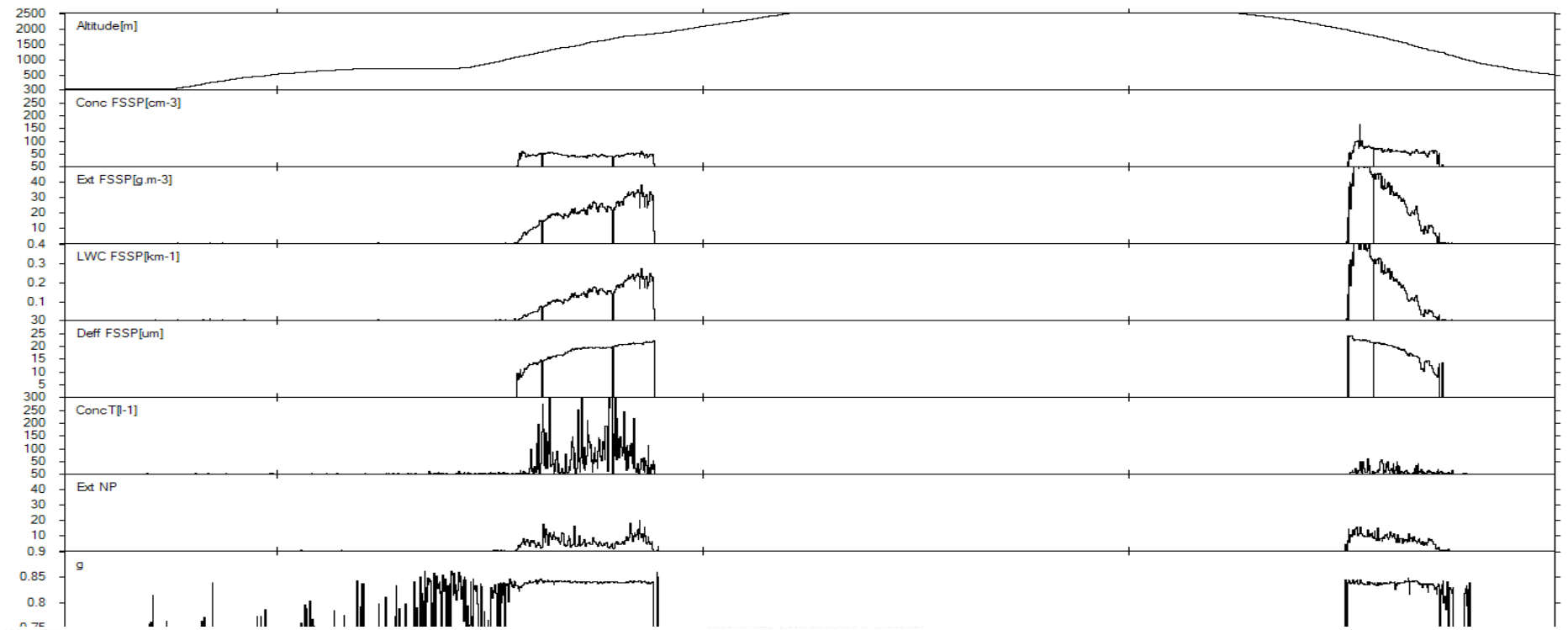
06 00 18 12 06 00 18 12 06 00 18 12 06 00 18 12 06 00 18 12 06 00 18 12 06 00 18 12
05/06 05/05 05/04 05/03 05/02 05/01

Job ID: 39759 Job Start: Fri May 7 14:31:37 UTC 2010
Source 1 lat.: 78.1815 lon.: 14.25881 height: 1000 m AMSL

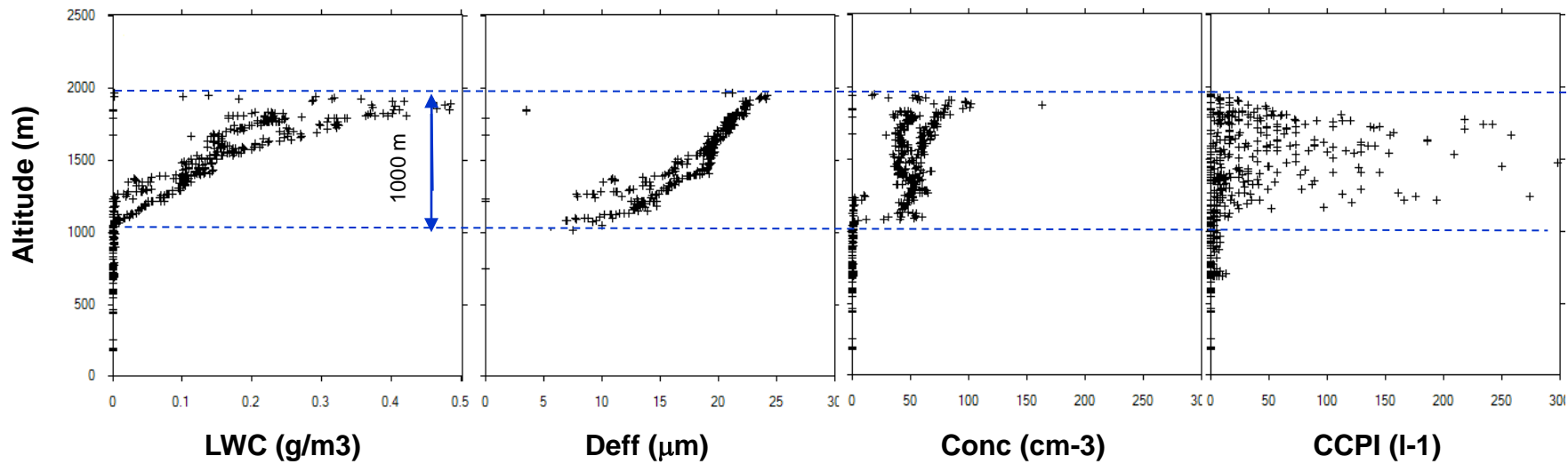
Trajectory Direction: Backward Duration: 144 hrs
Vertical Motion Calculation Method: Isobaric
Meteorology: 0000Z 01 May 2010 - GDAS1

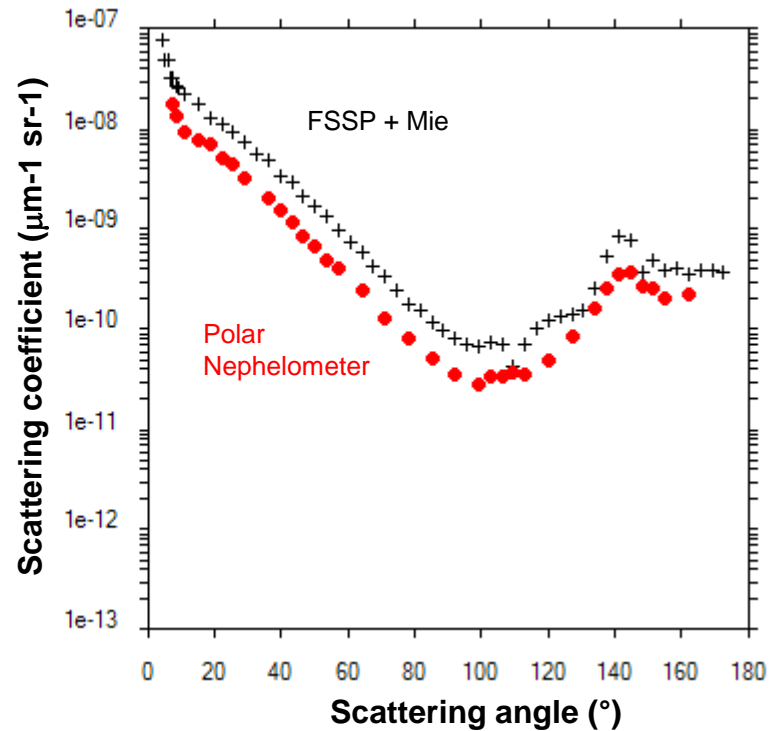
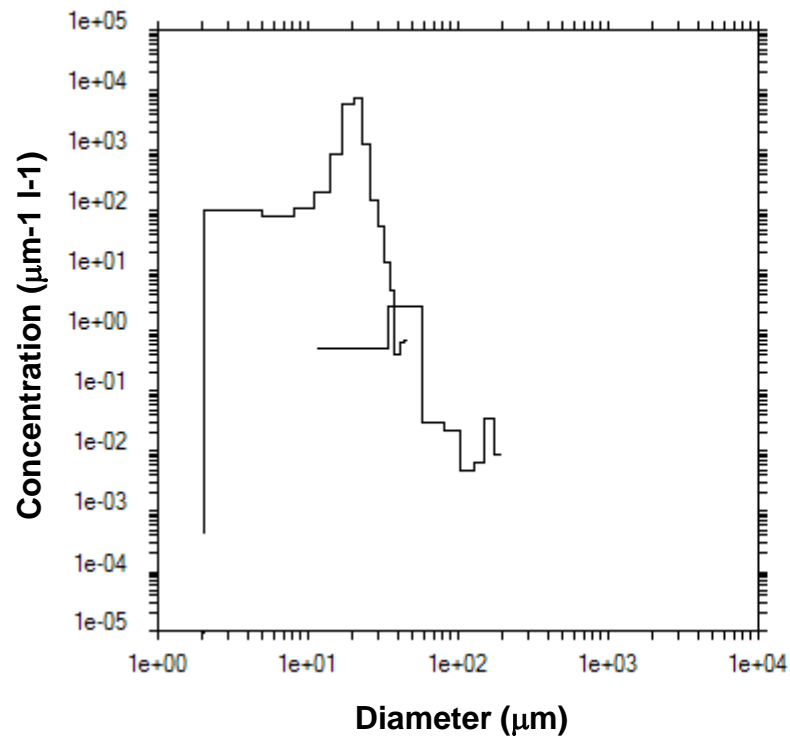
Backtrajectories

Source 1 : 78.1815N
14.25881E
6 days back



06:45 06:50 06:55 07:00 07:05 07:10 07:15 07:20





Conc = 50 cm^{-3}

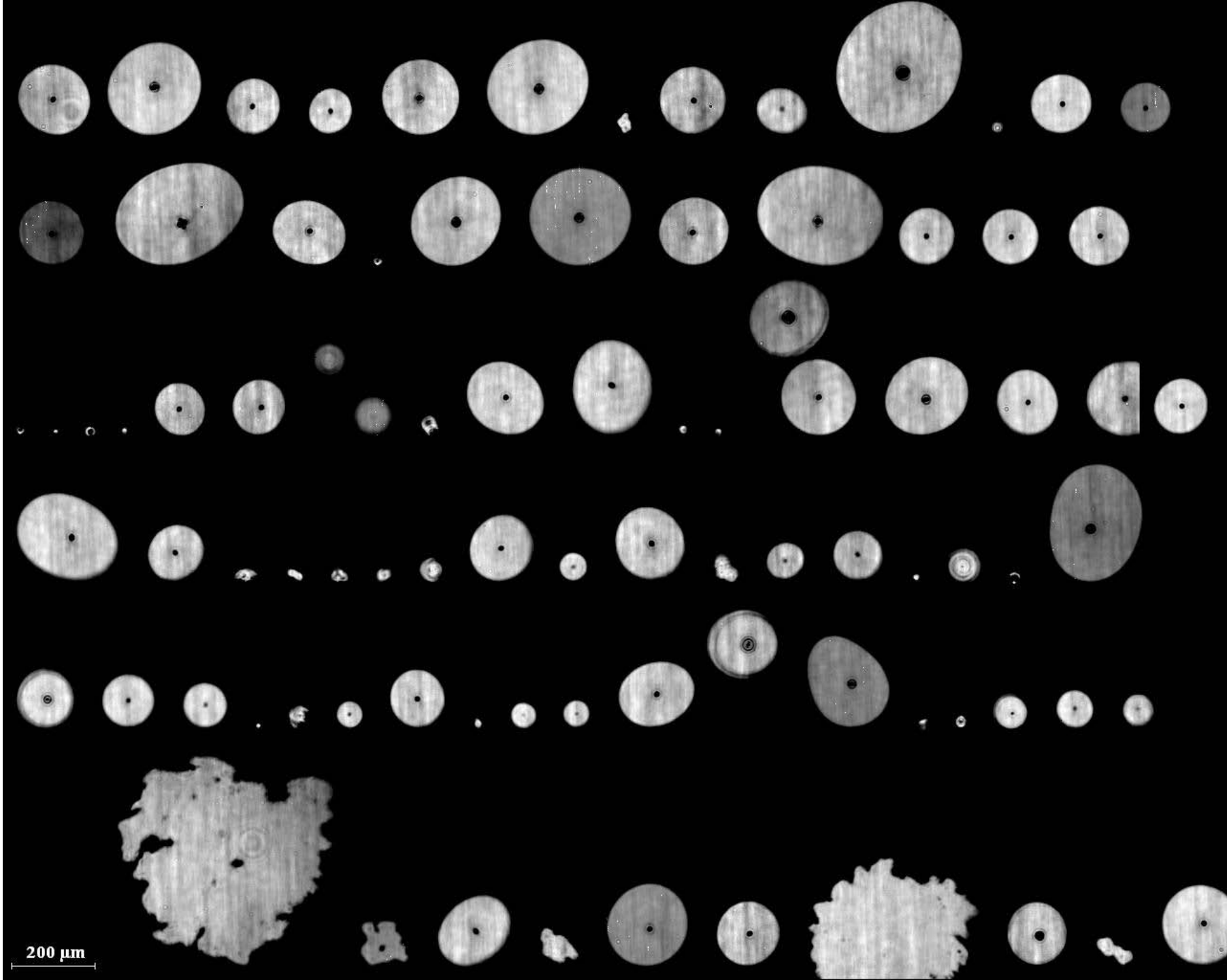
LWC = 0.20 g/m^3

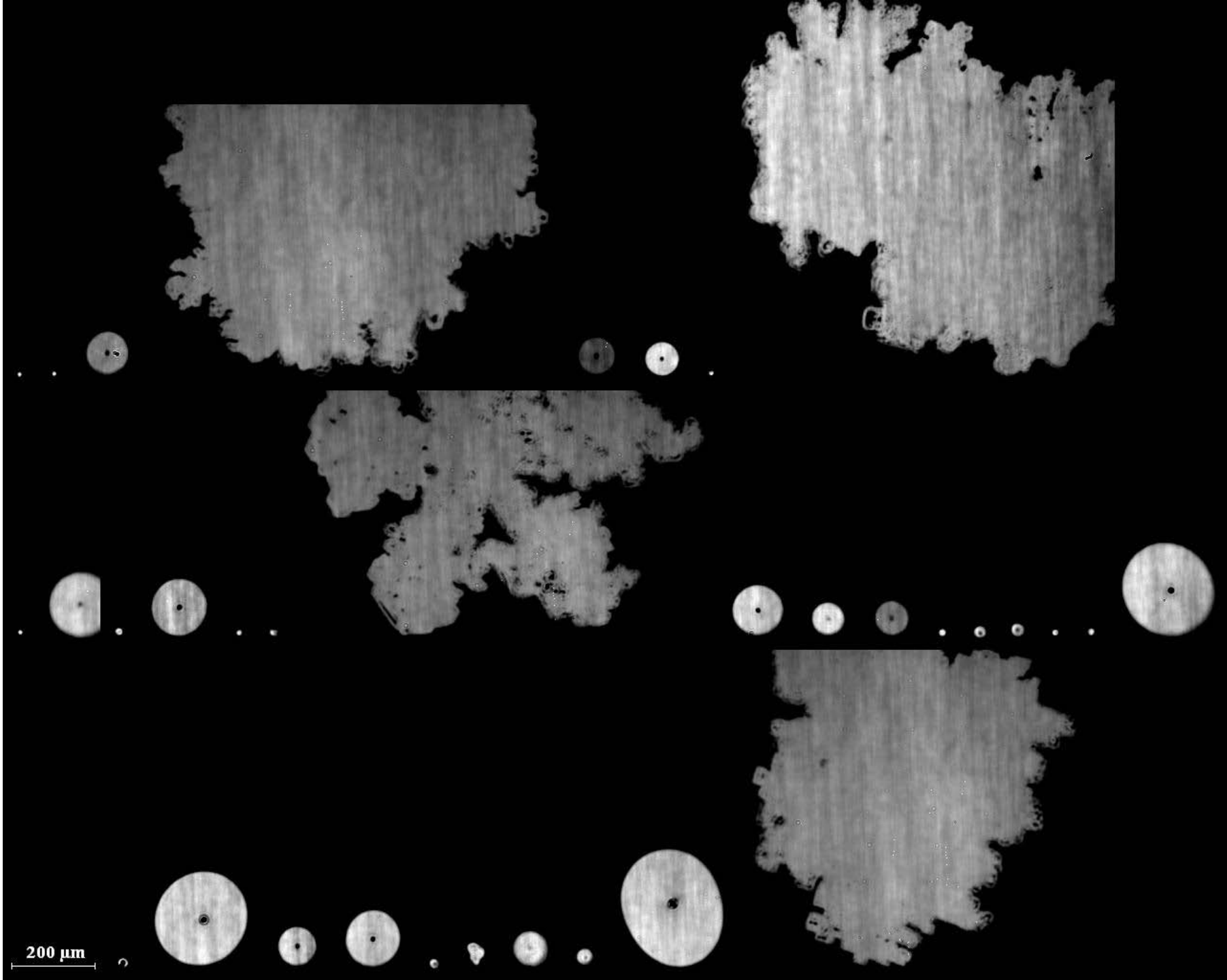
Ext = 30 km^{-1}

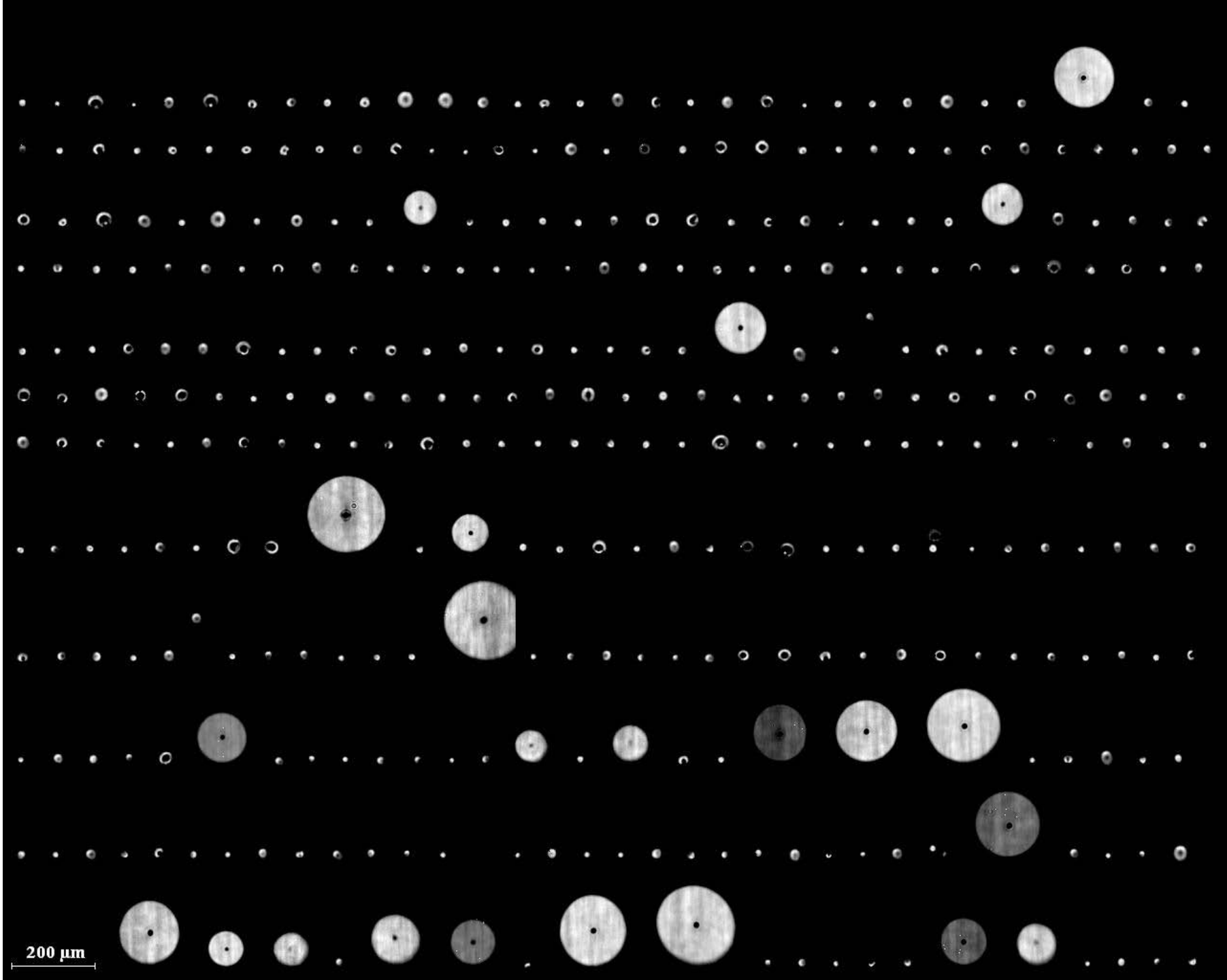
Deff = 21 μm

CCPI = 1. l^{-1}

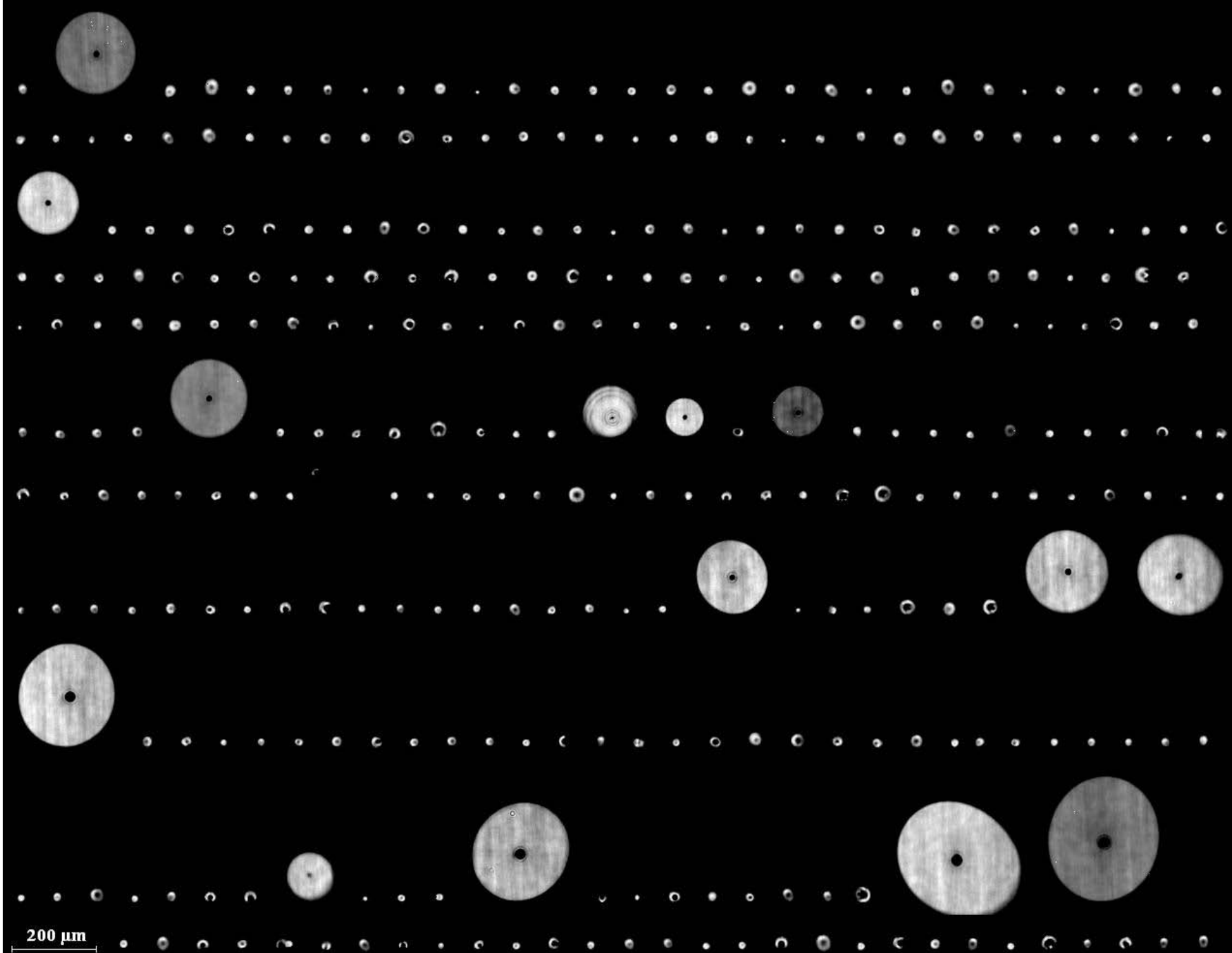
$g = 0.839$



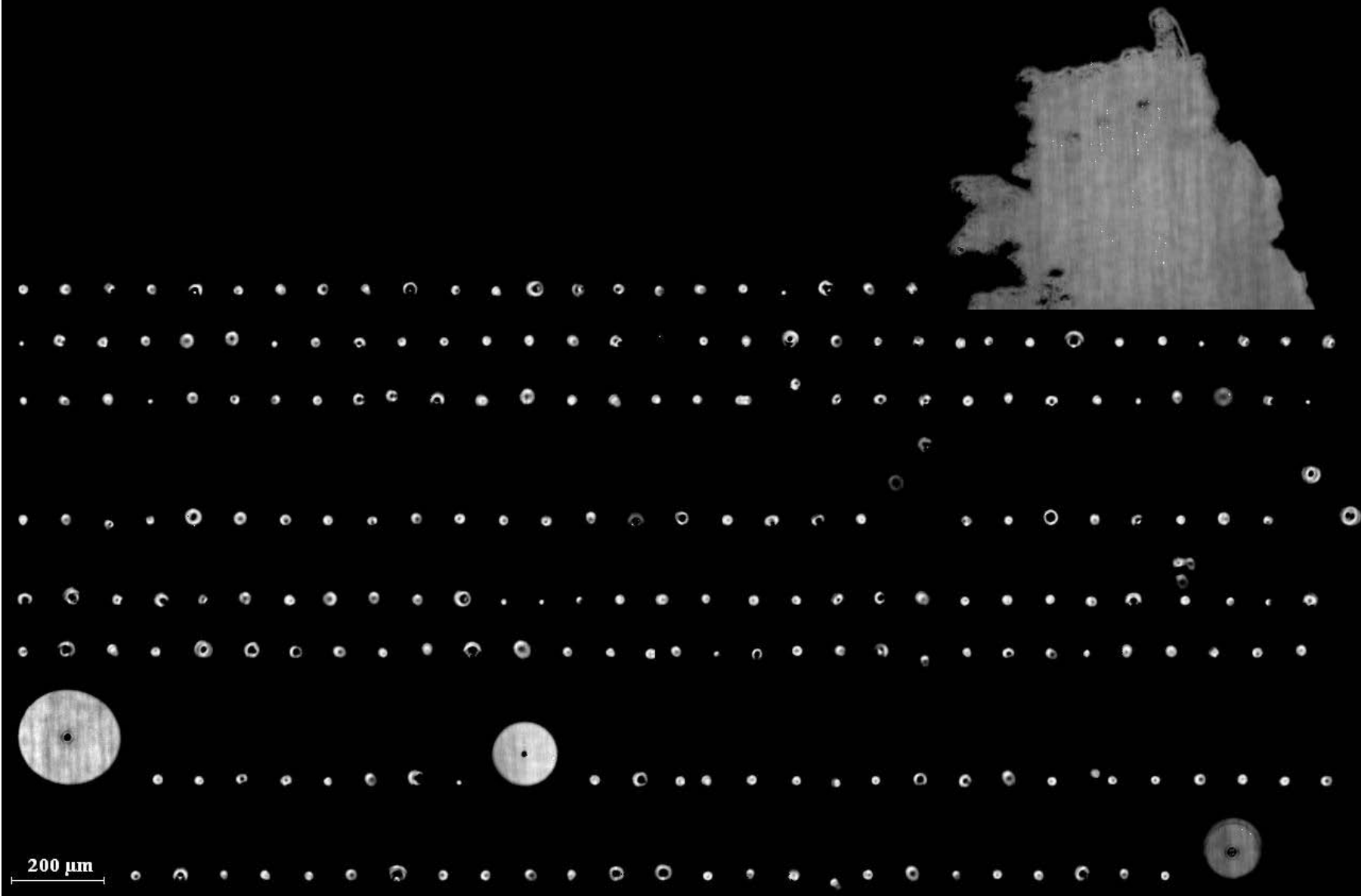


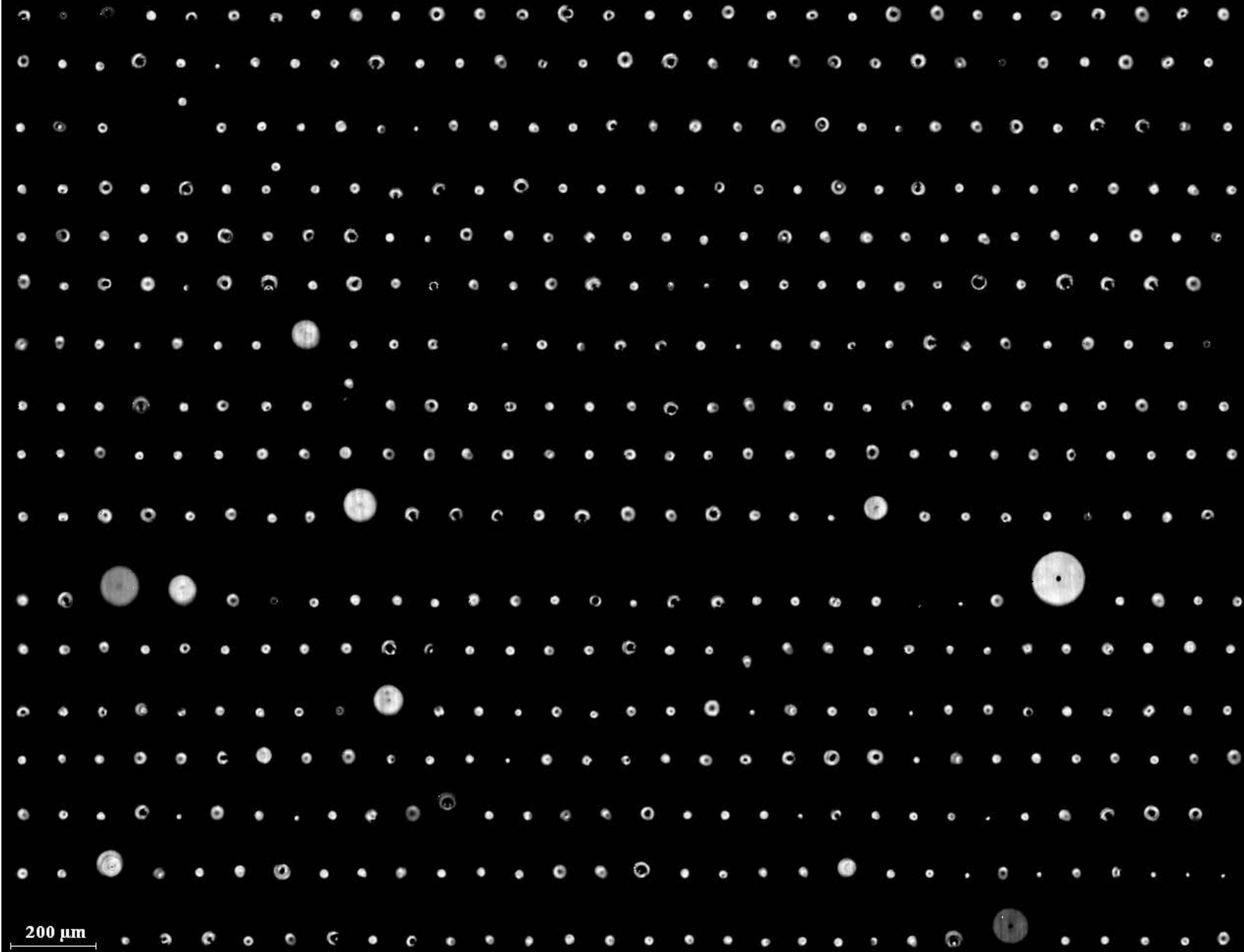


200 μm

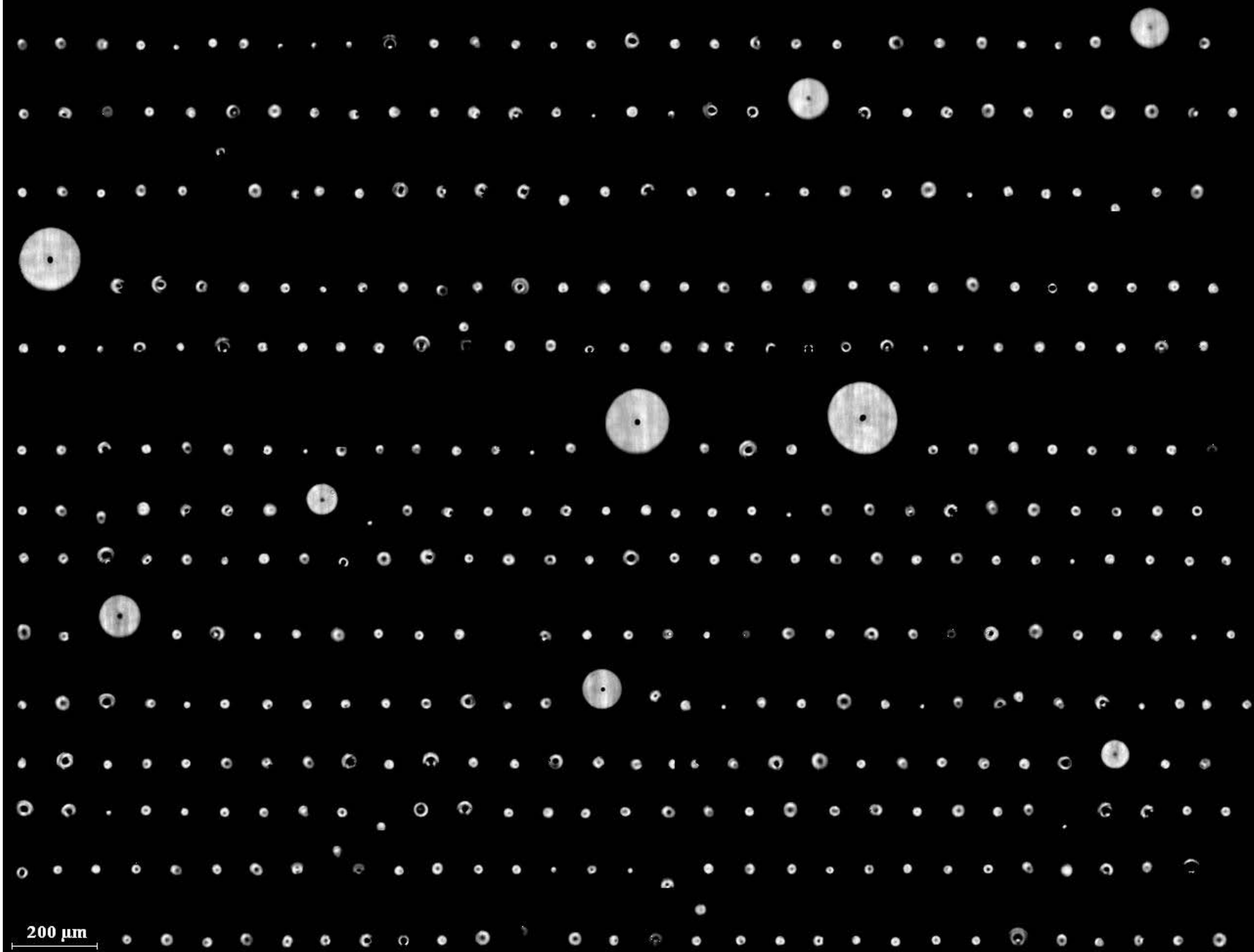


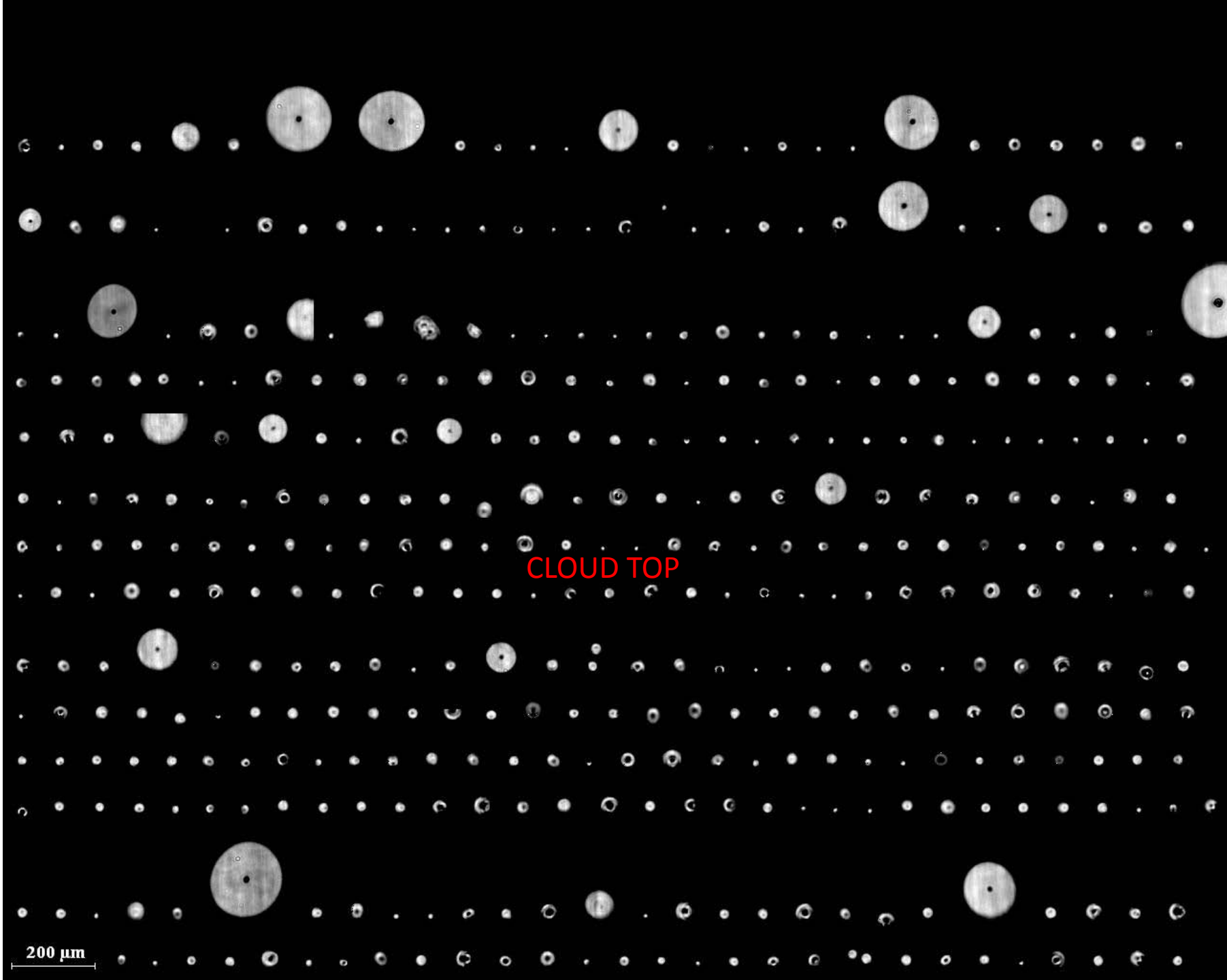
200 μm





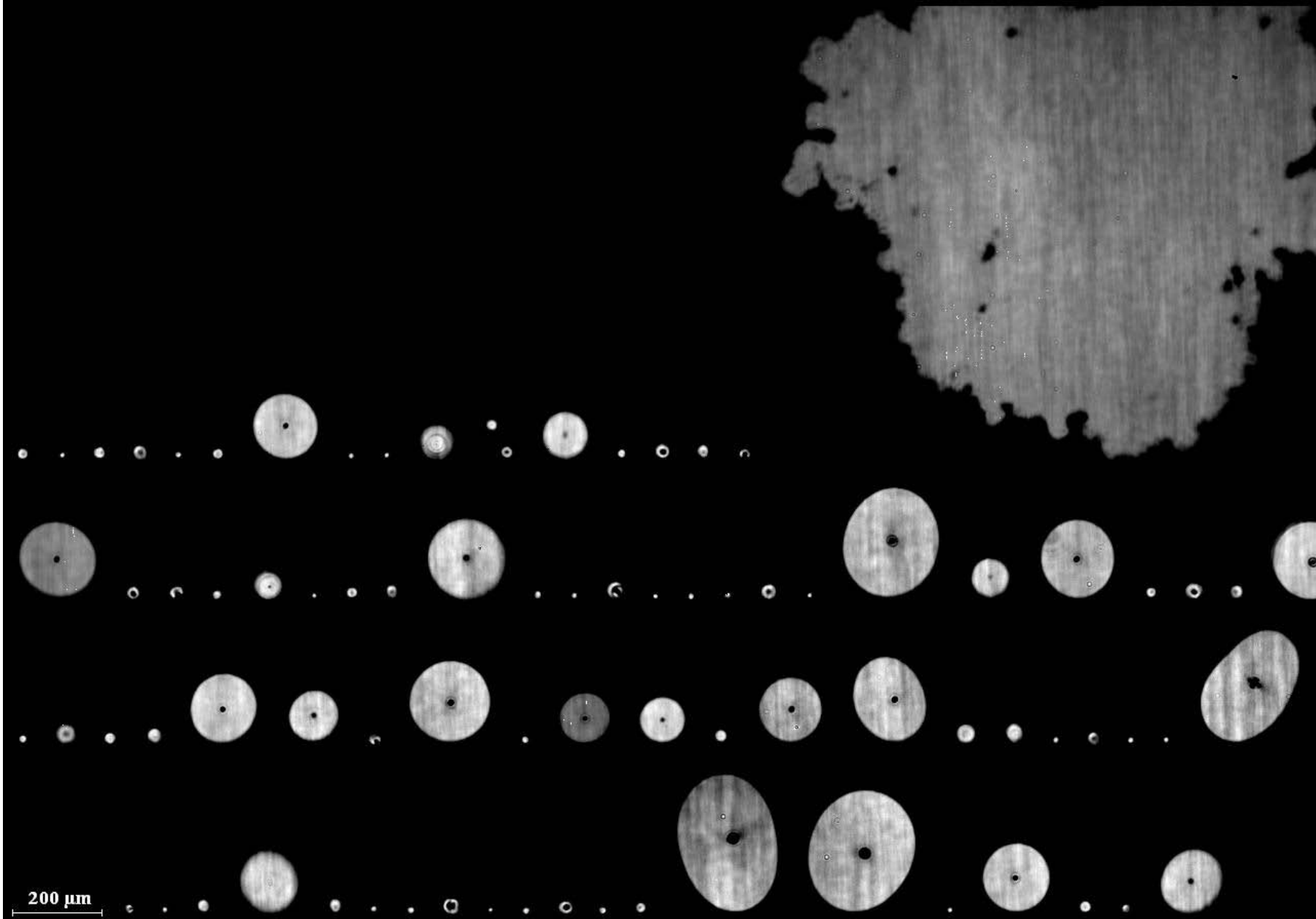
200 μm

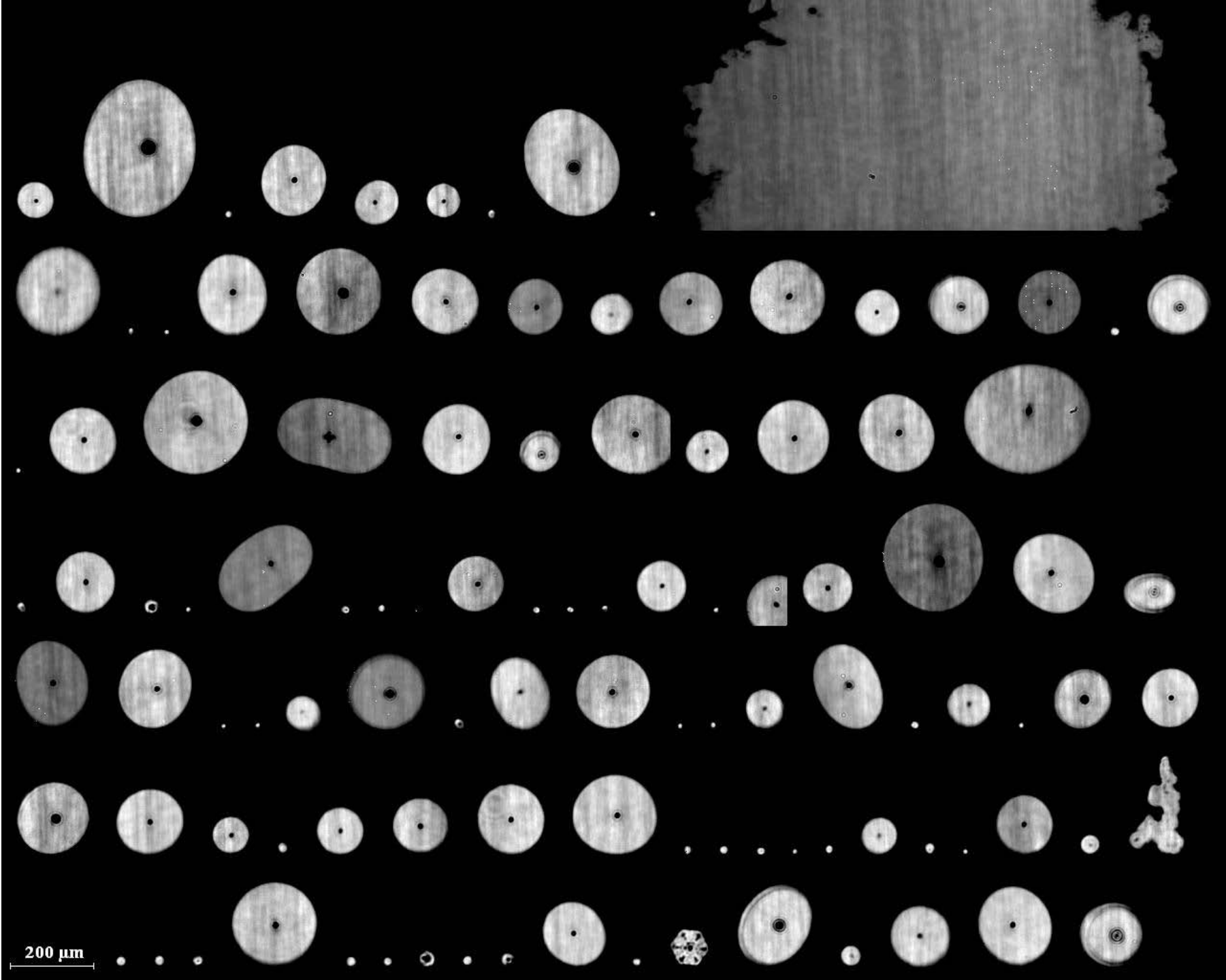




CLOUD TOP

200 μm





200 μm

END

200 μm

