

# SORPIC

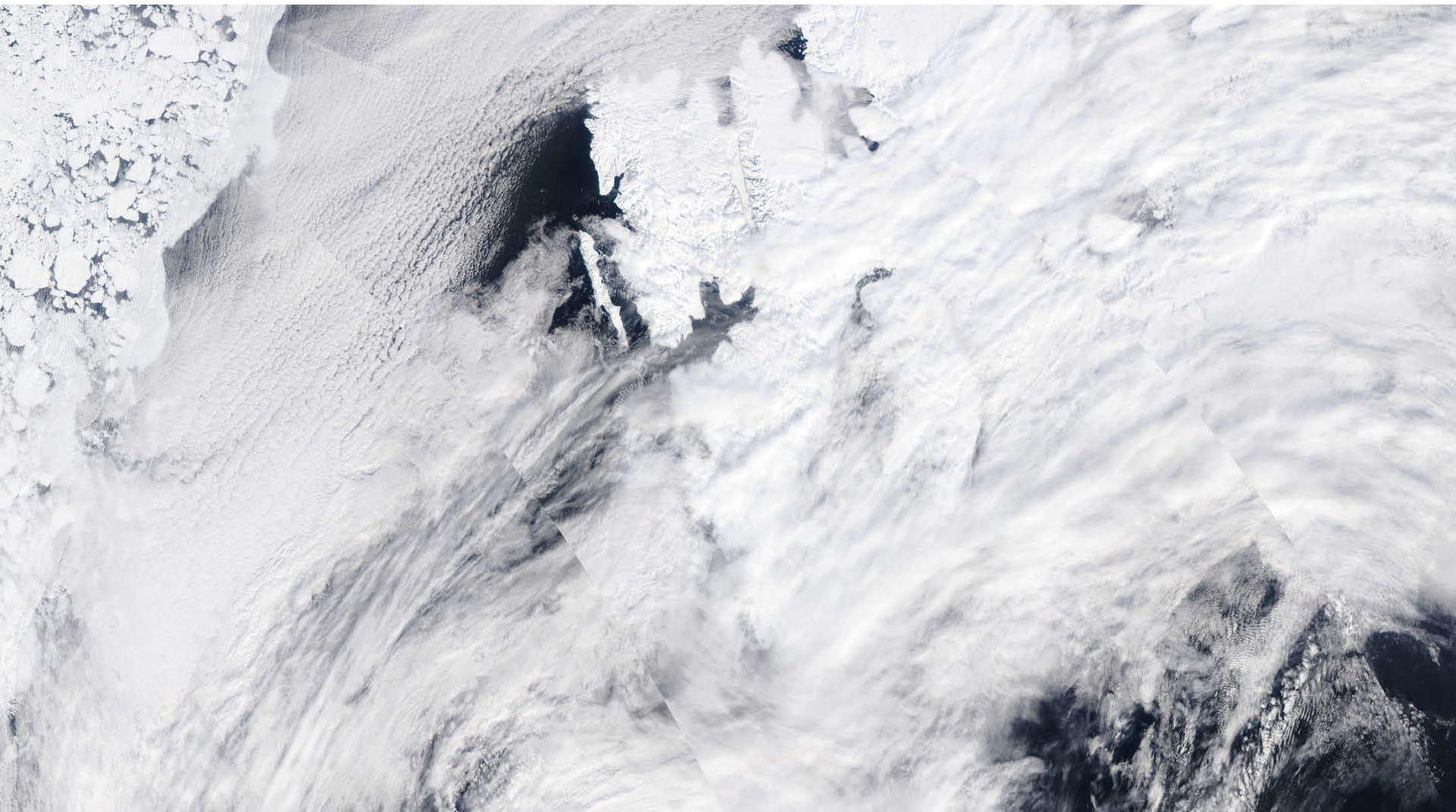
**9 May Polar 5 Flight**

*Christophe Goubeyre, Jean – François Gayet and Régis Dupuy*

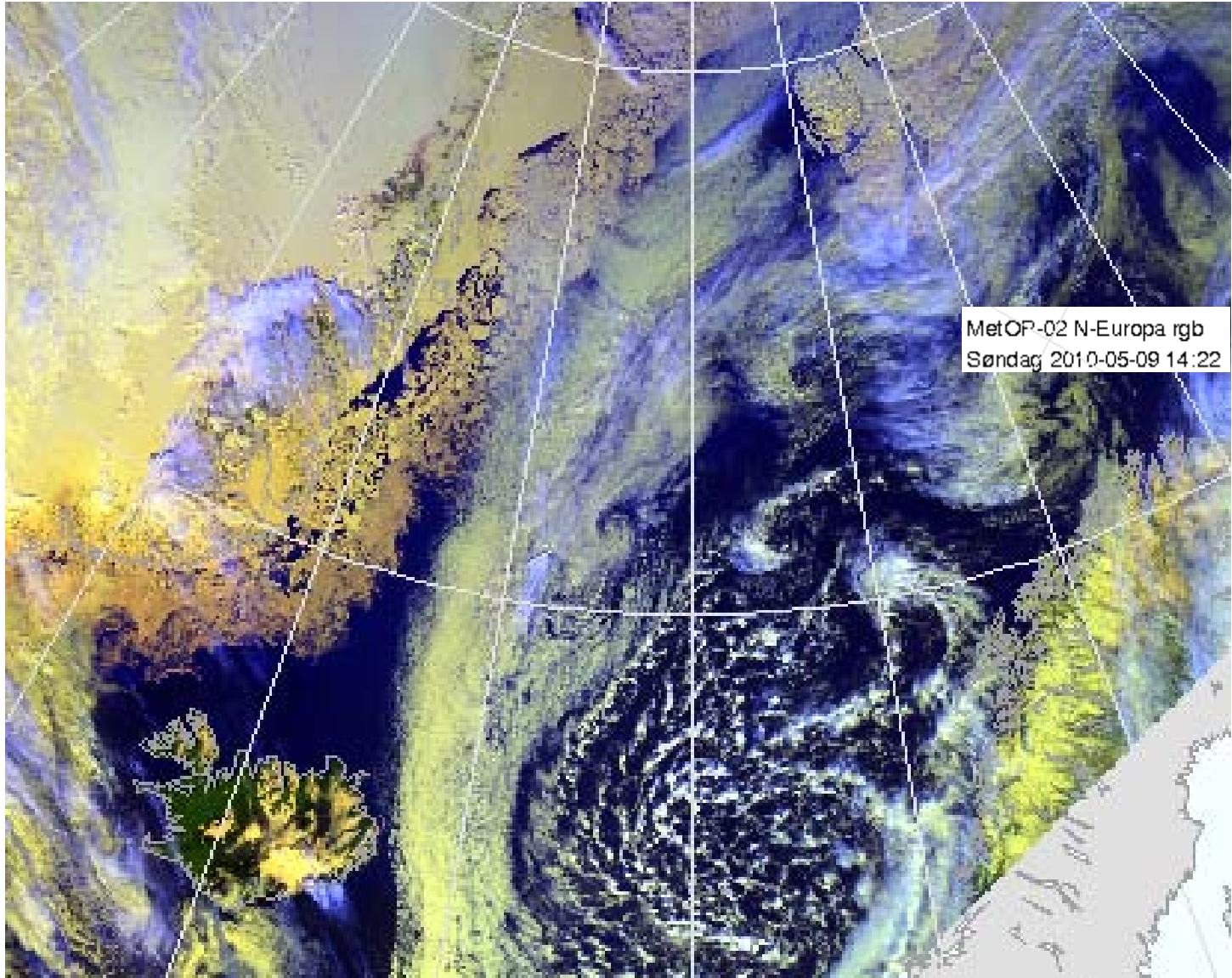
*LaMP CNRS / Université Blaise Pascal*



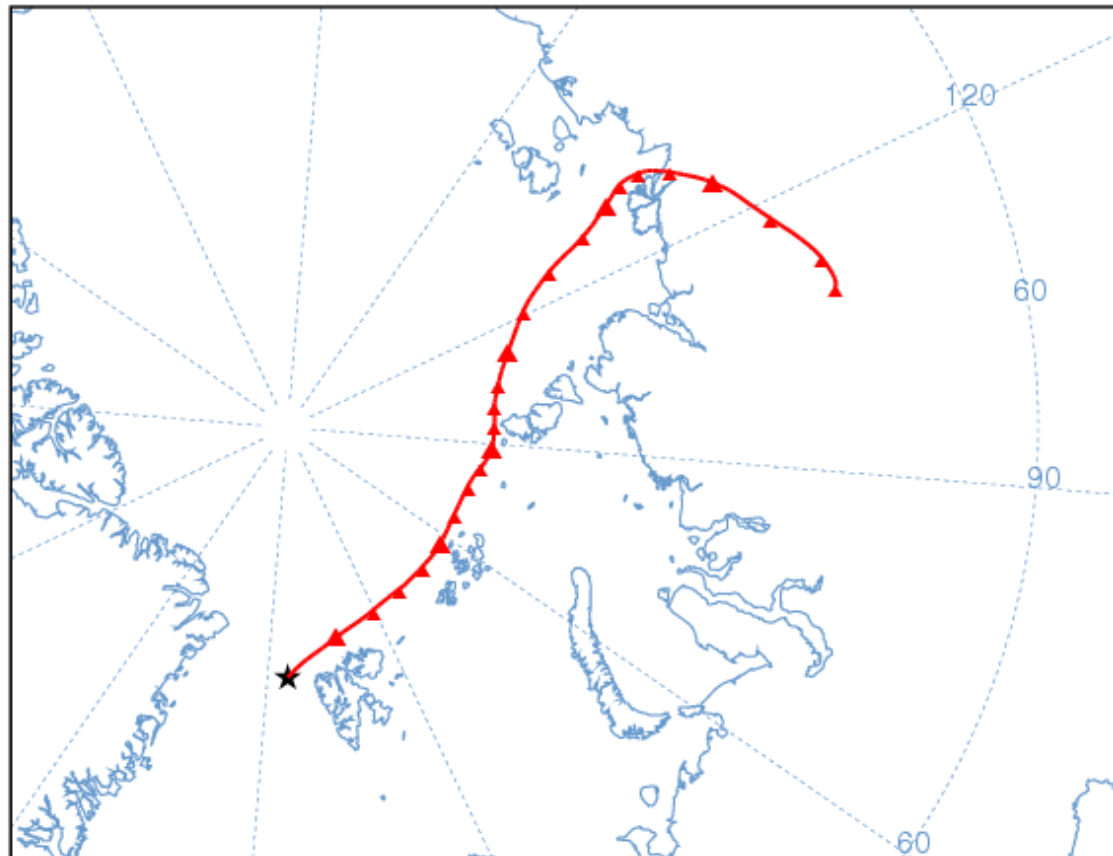
# MODIS : AQUA



# NOAA

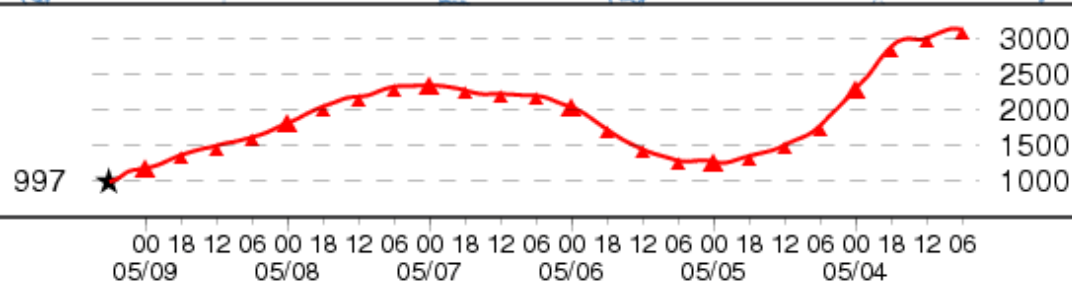


Source ★ at 79.79 N 4.61 E



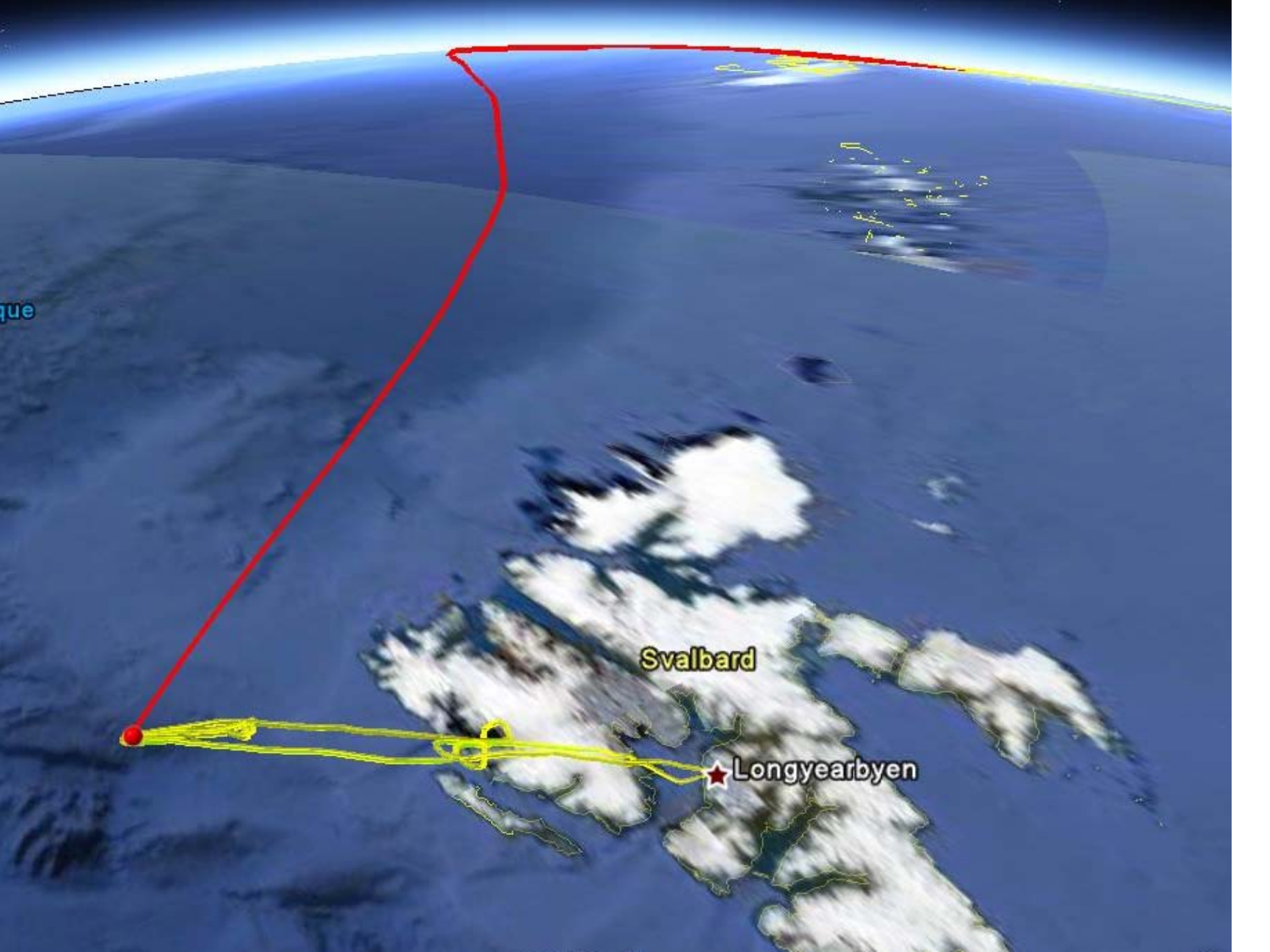
# 6 Days Backtrajectory

Meters AGL



Job ID: 34947      Job Start: Sun May 9 17:18:32 UTC 2010  
Source 1    lat.: 79.79167    lon.: 4.61389    height: 1000 m AMSL

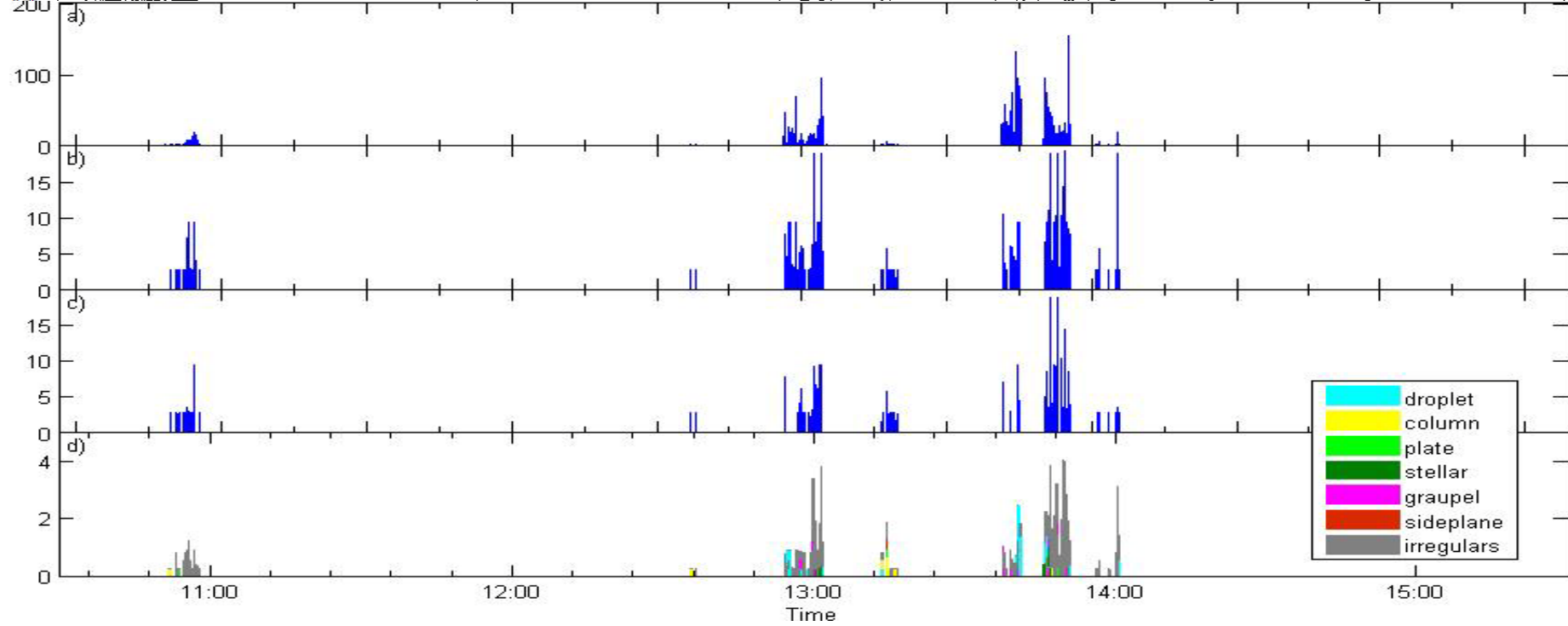
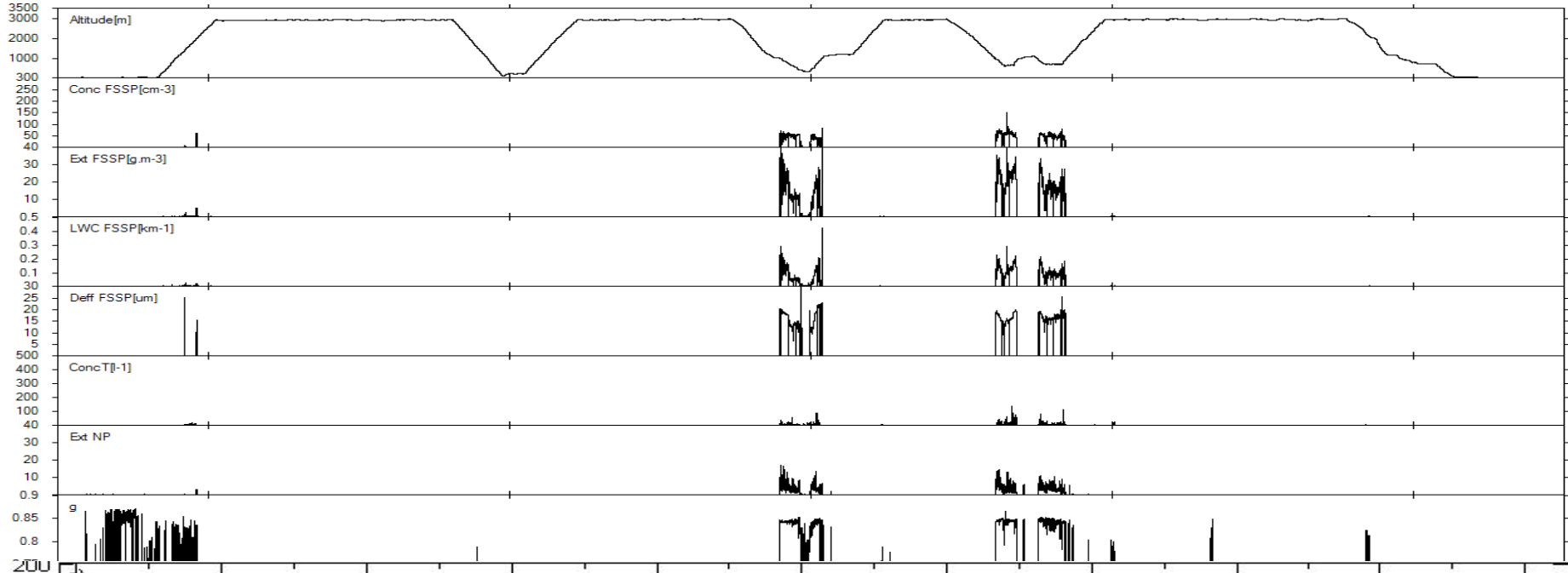
Trajectory Direction: Backward    Duration: 144 hrs  
Vertical Motion Calculation Method: Model Vertical Velocity  
Meteorology: 0000Z 08 May 2010 - GDAS1

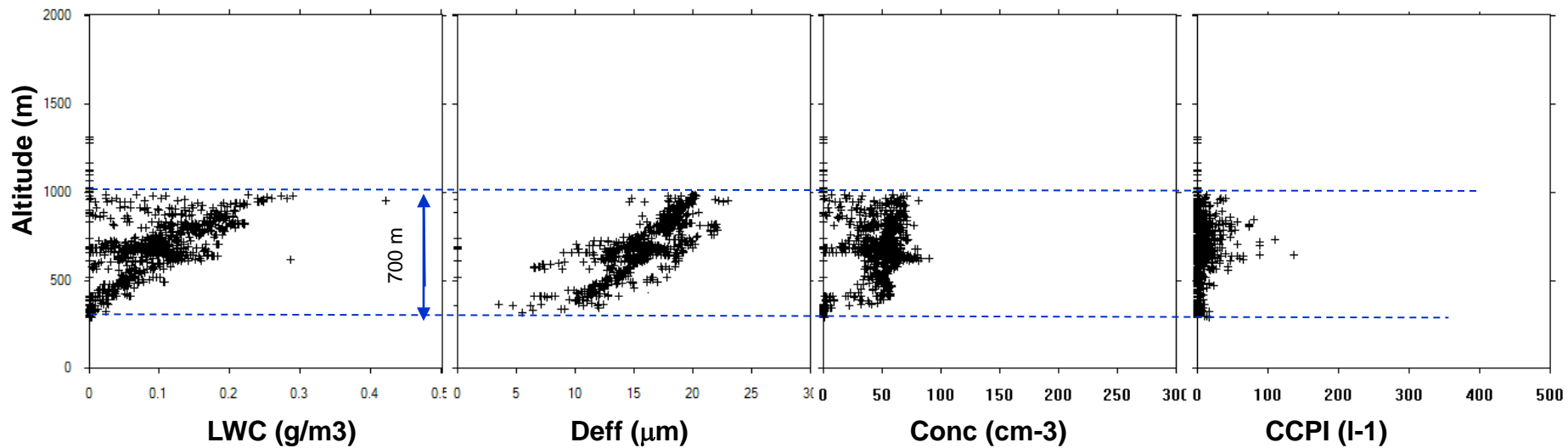


que

Svalbard

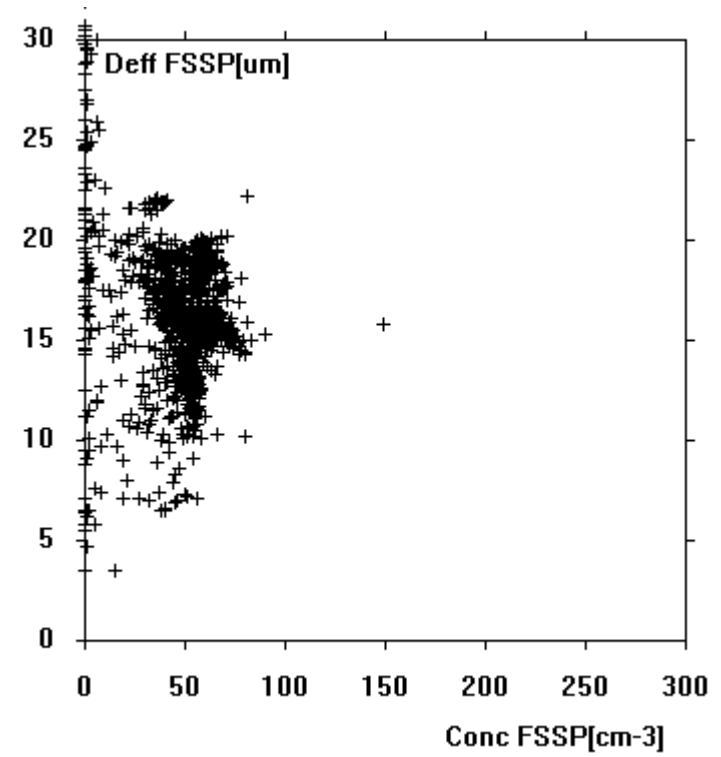
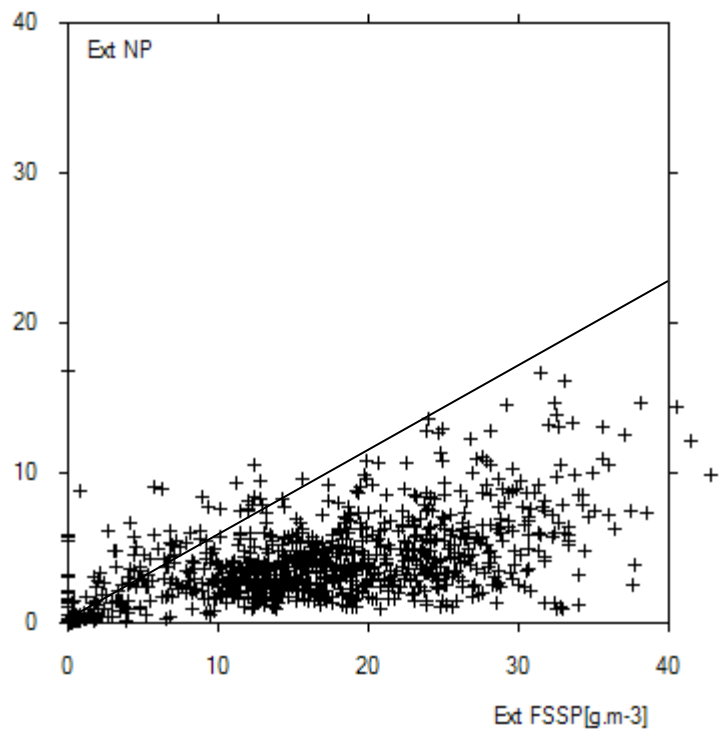
★ Longyearbyen

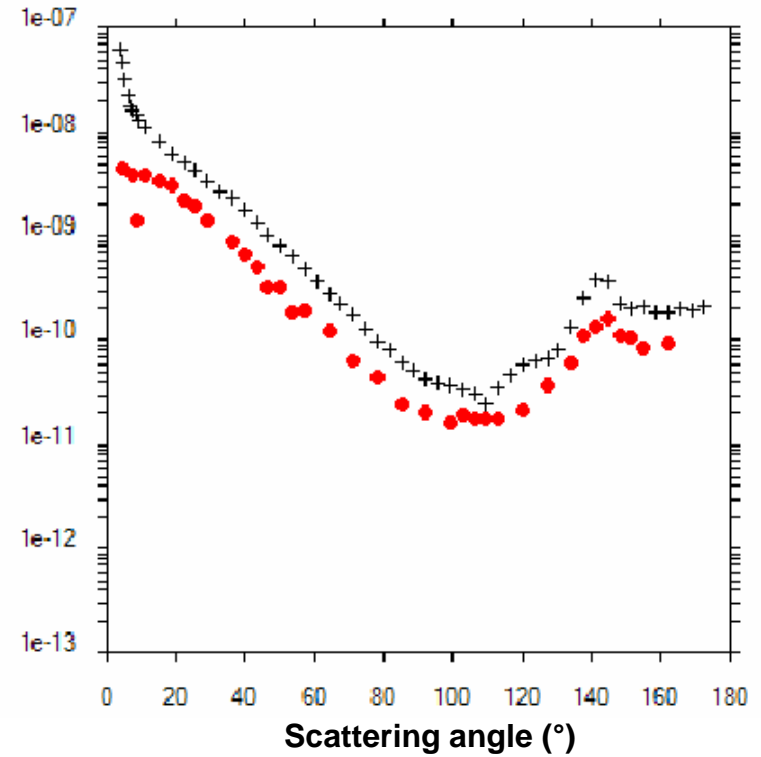
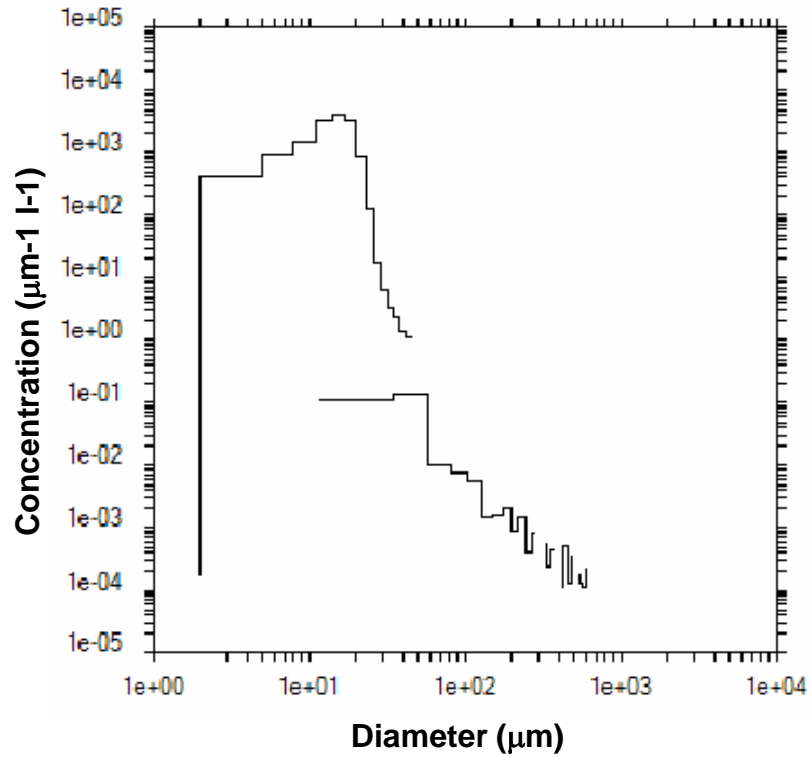












Conc = 40  $\text{cm}^{-3}$

LWC = 0.10  $\text{g}/\text{m}^3$

Ext = 15  $\text{km}^{-1}$

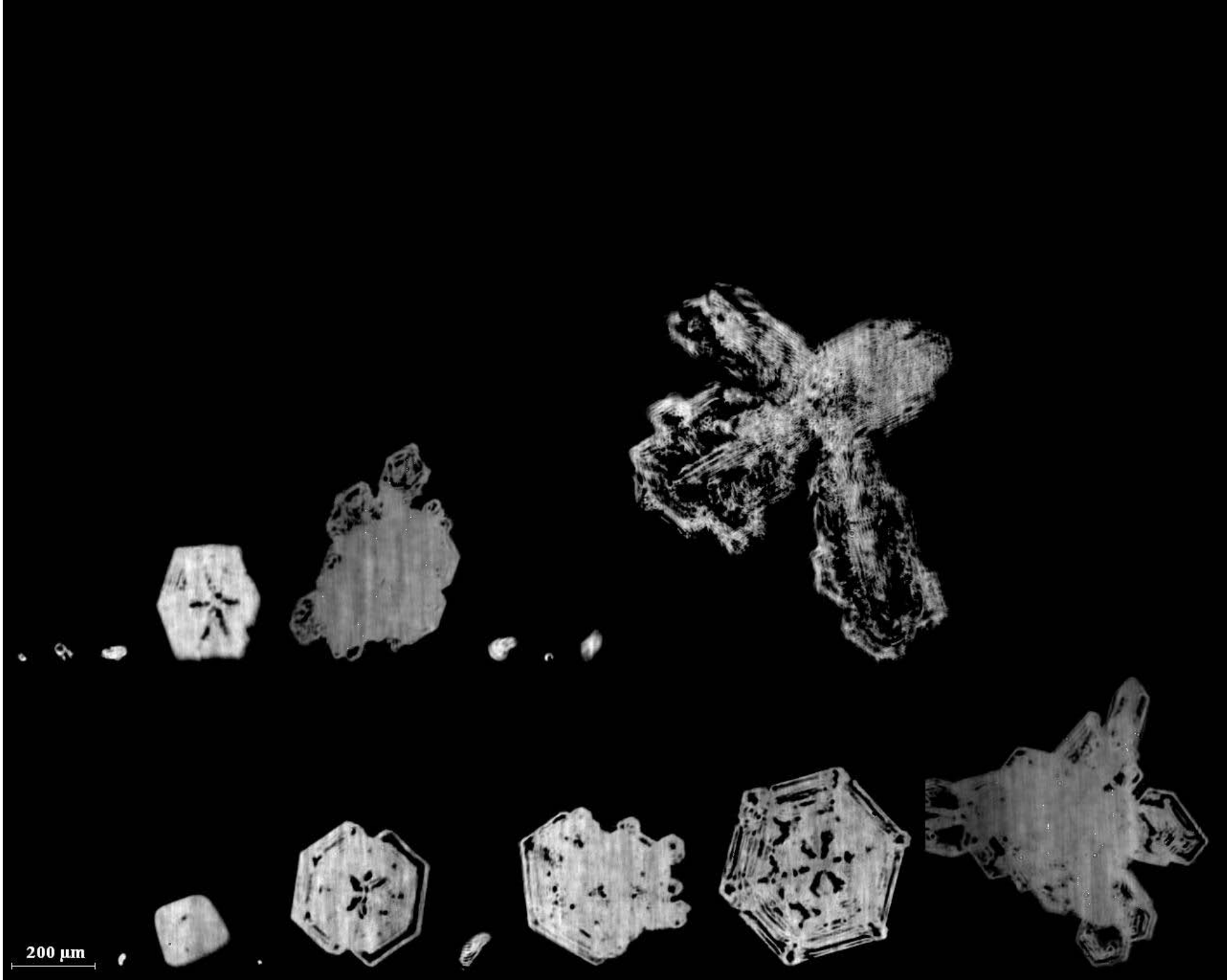
Deff = 16  $\mu\text{m}$

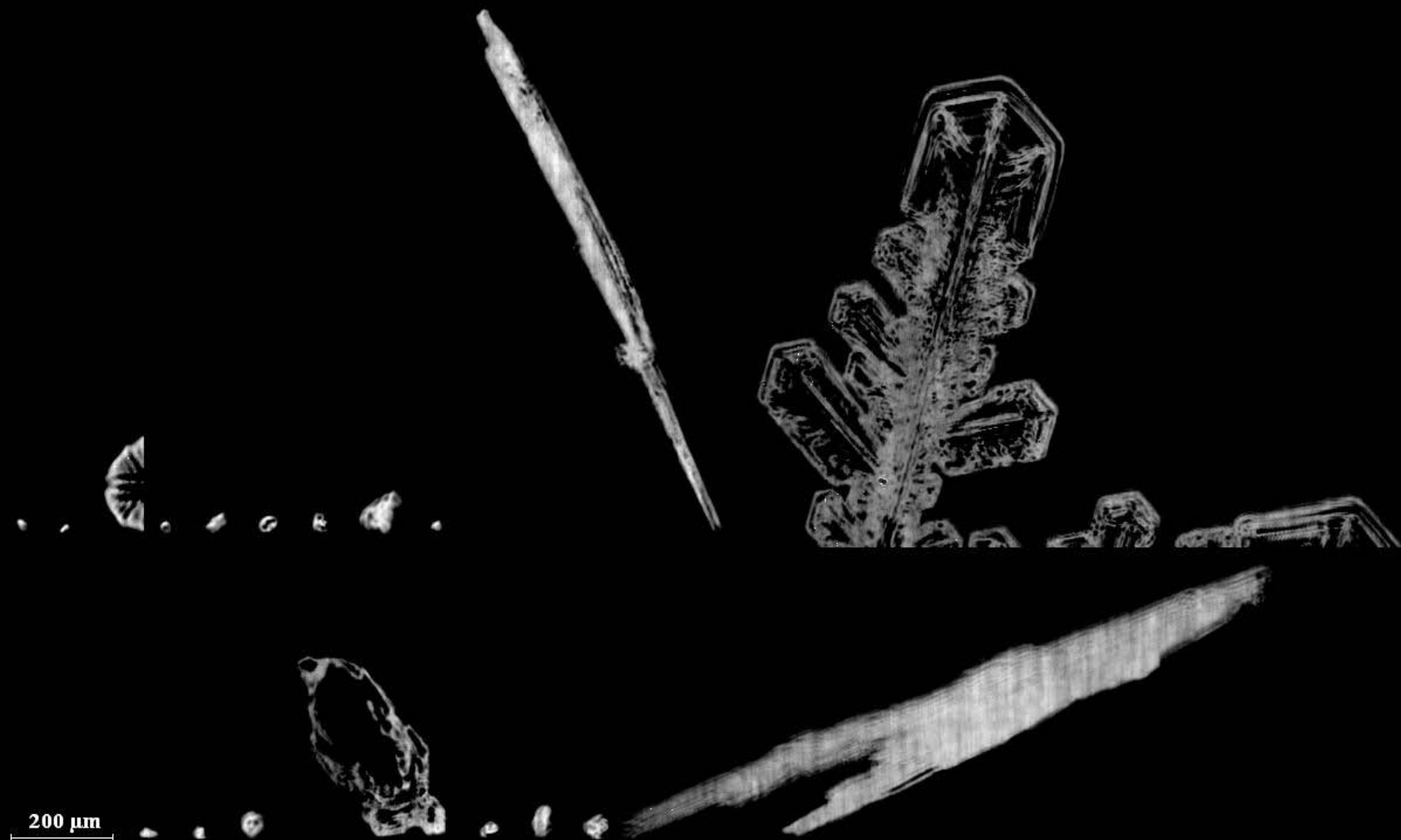
CCPI = 6.  $\text{l}^{-1}$

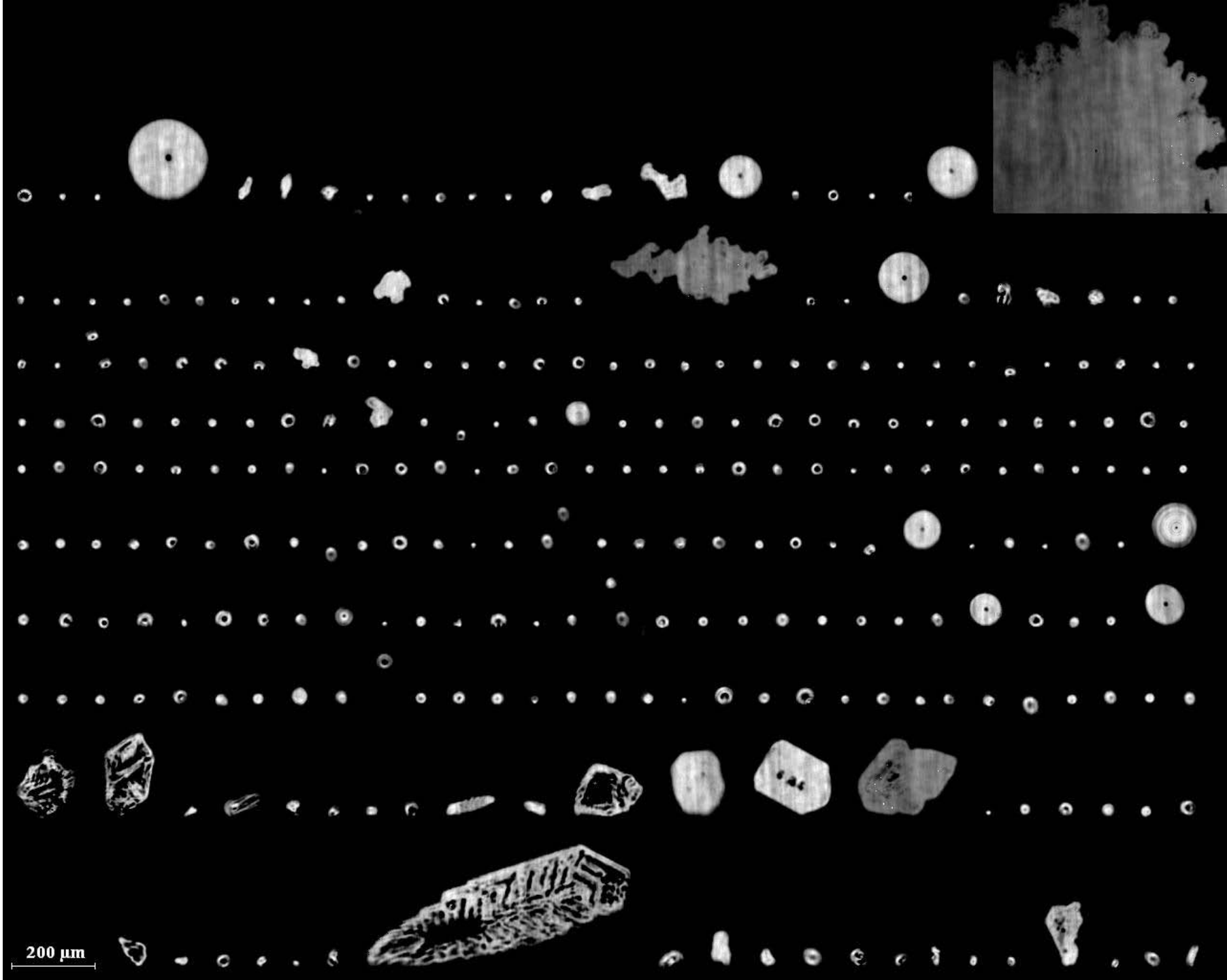
$g = 0.835$

9 May

CPI images

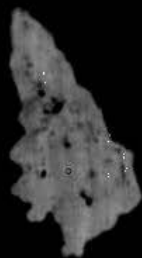
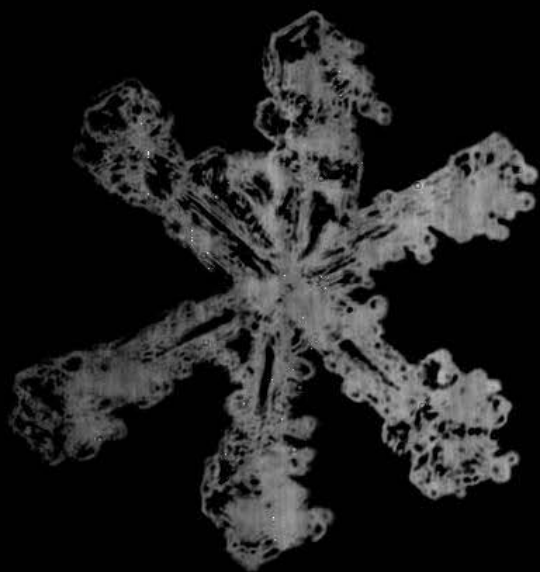






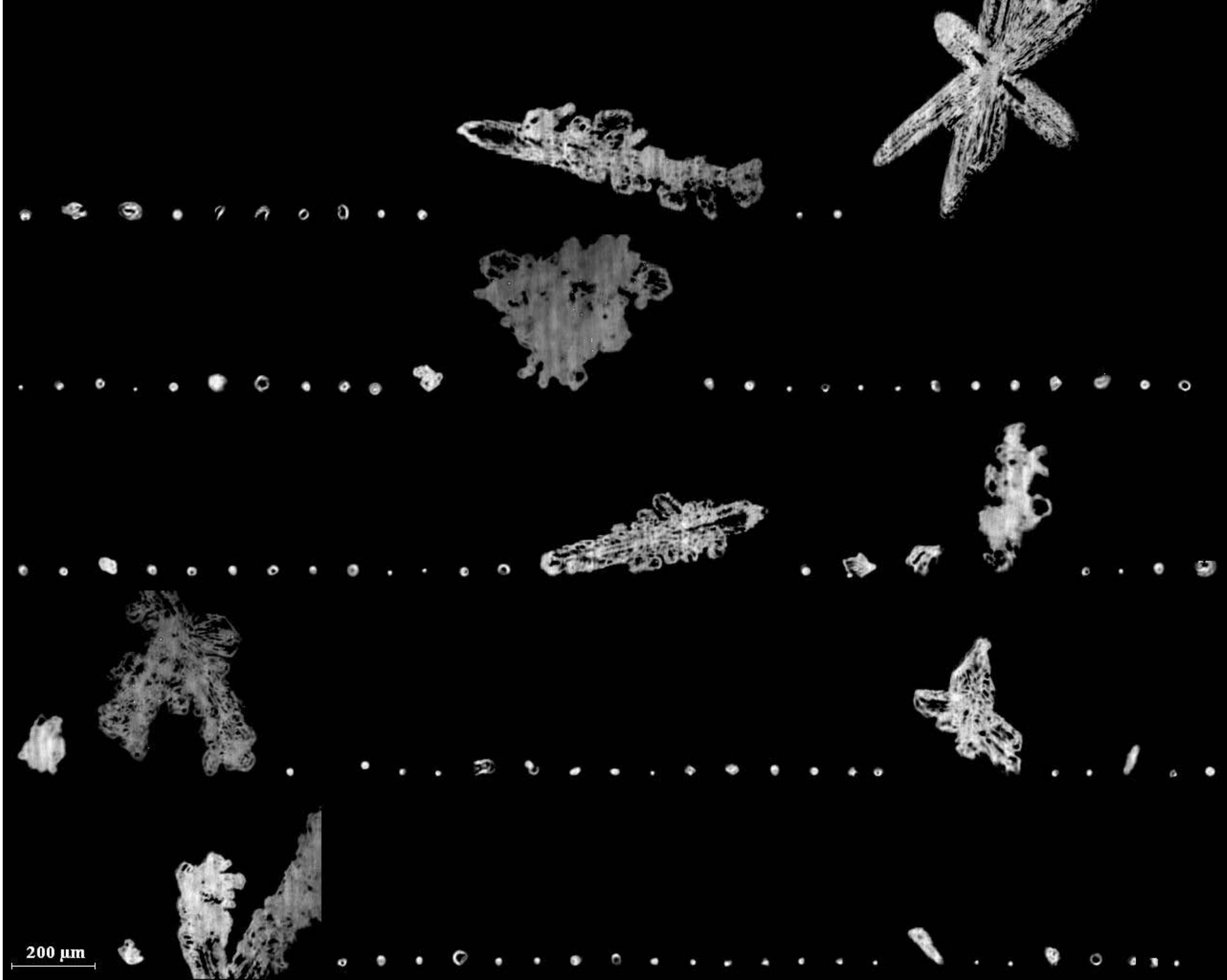
200  $\mu\text{m}$





200  $\mu\text{m}$

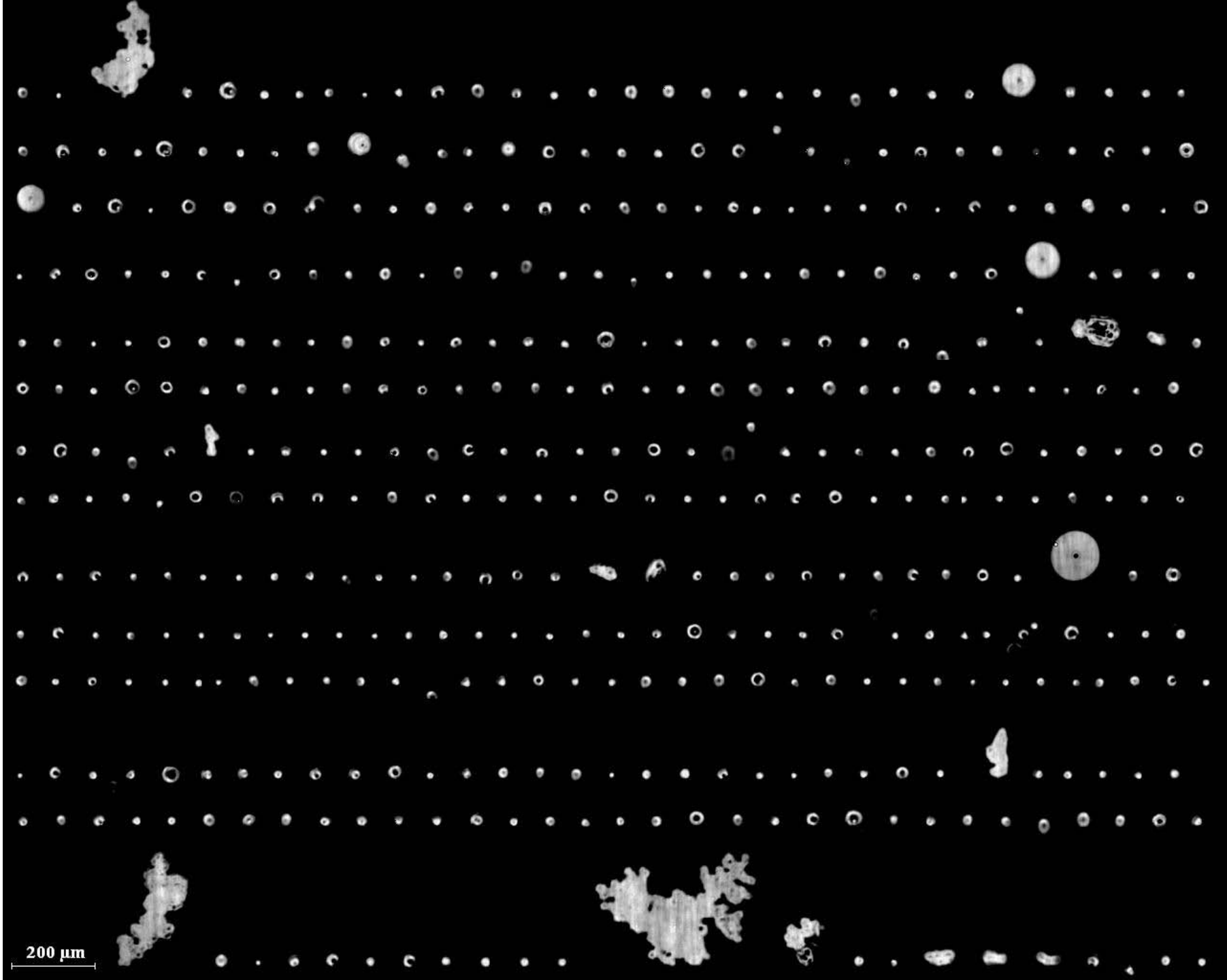


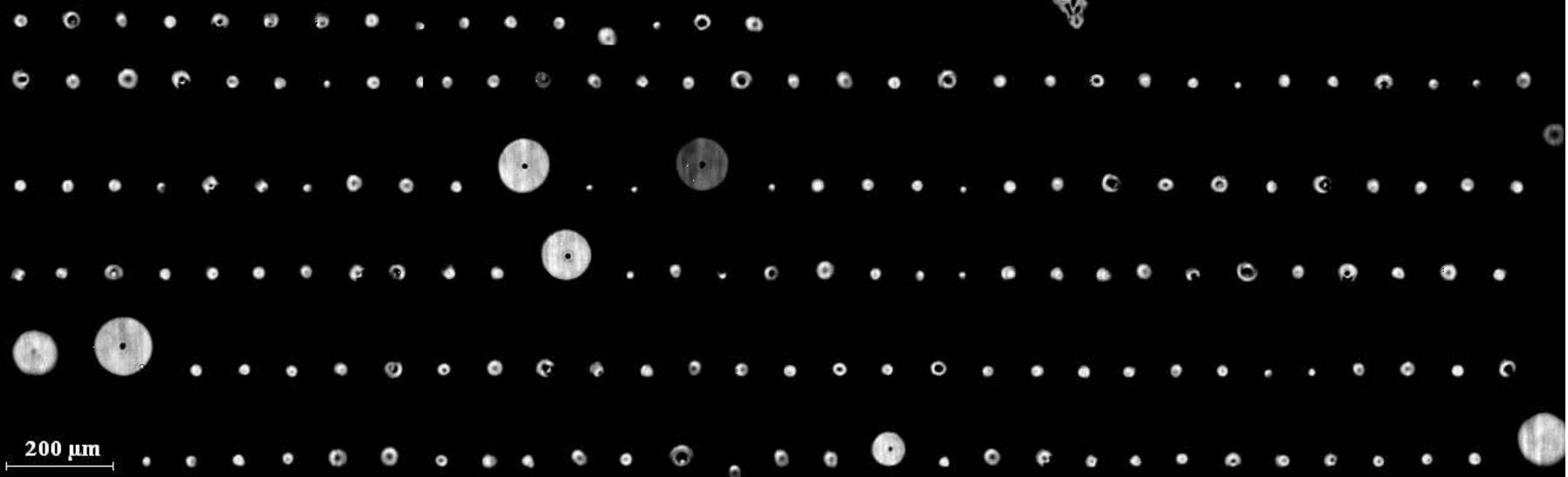


200 μm

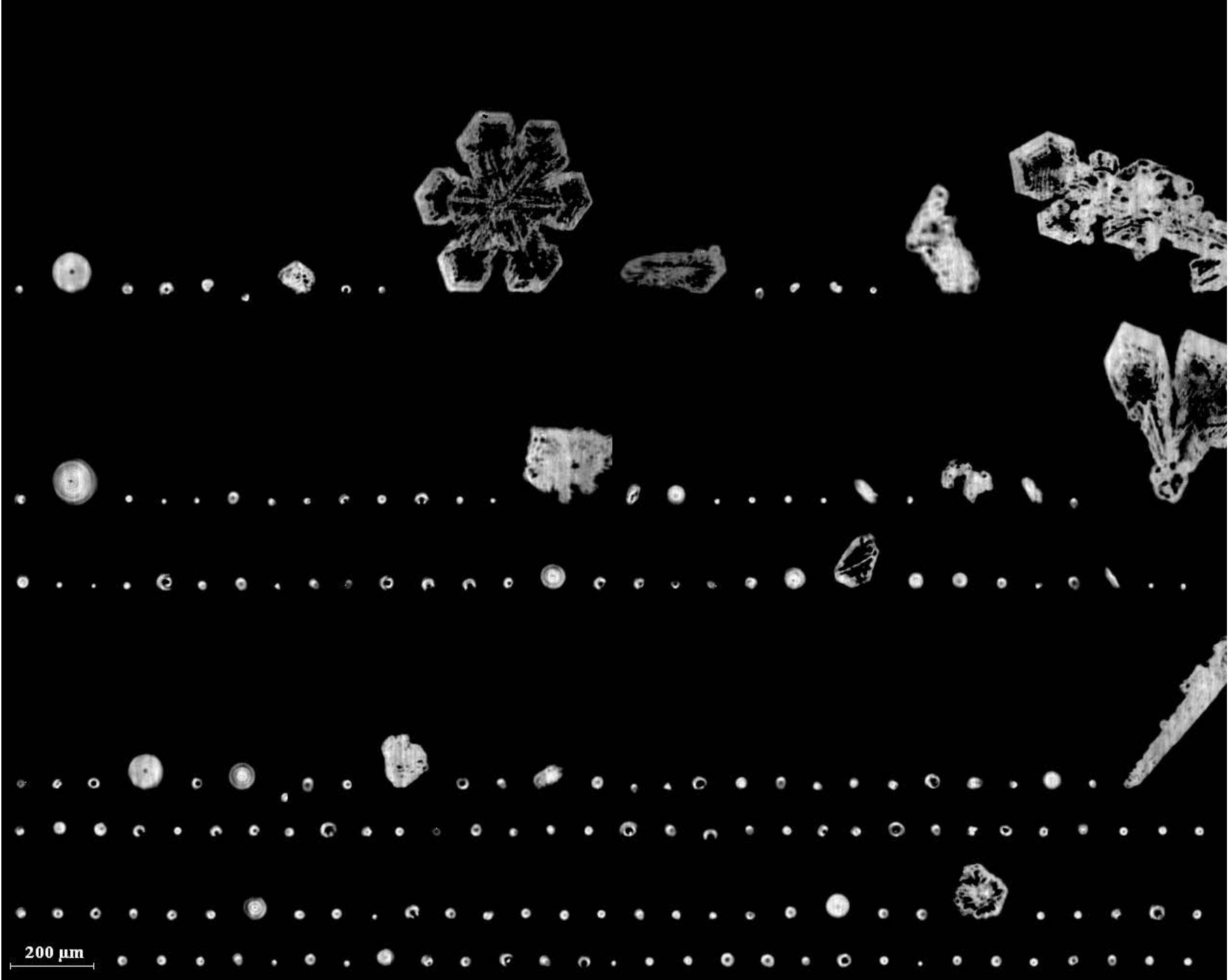


200  $\mu\text{m}$

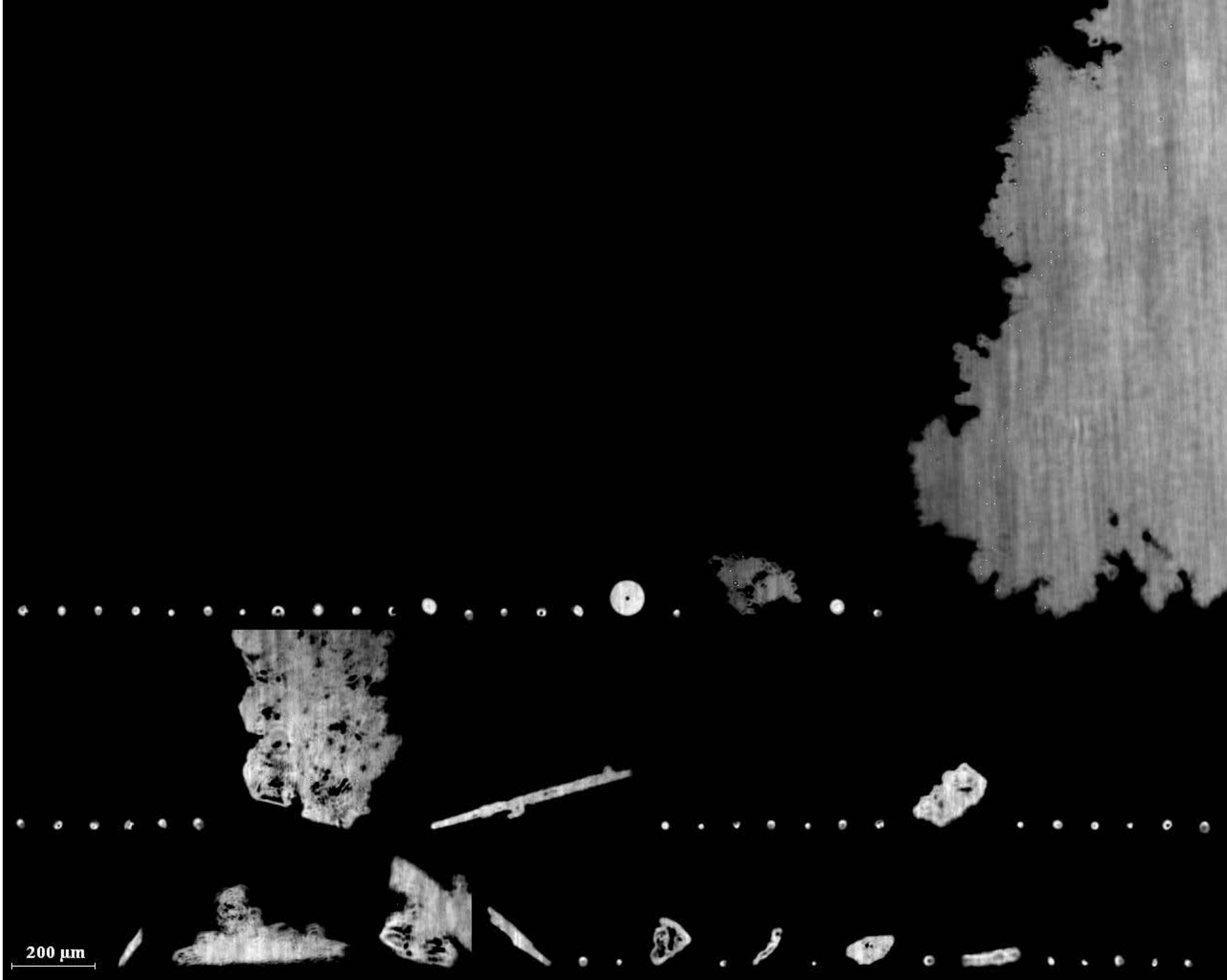




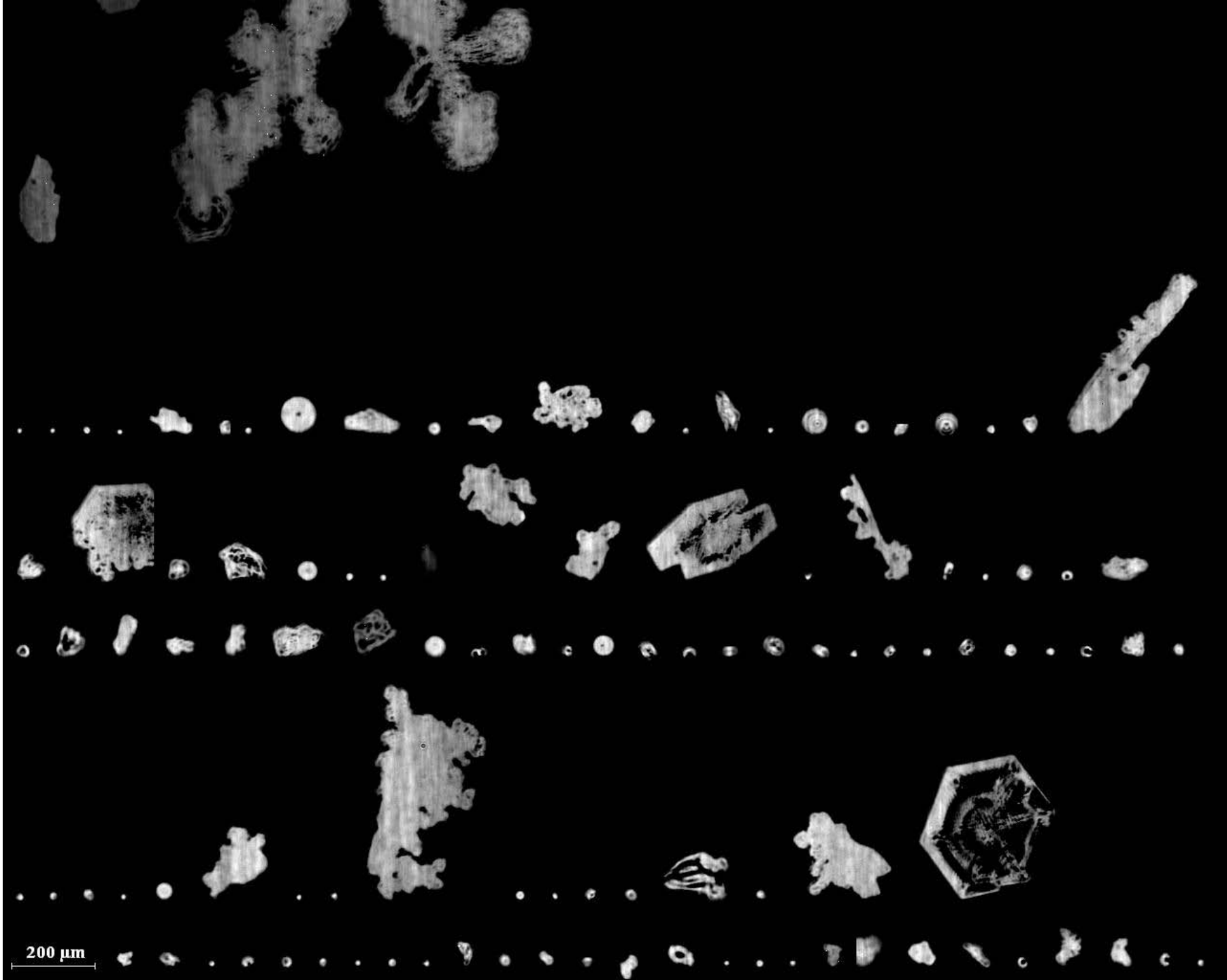
200  $\mu\text{m}$

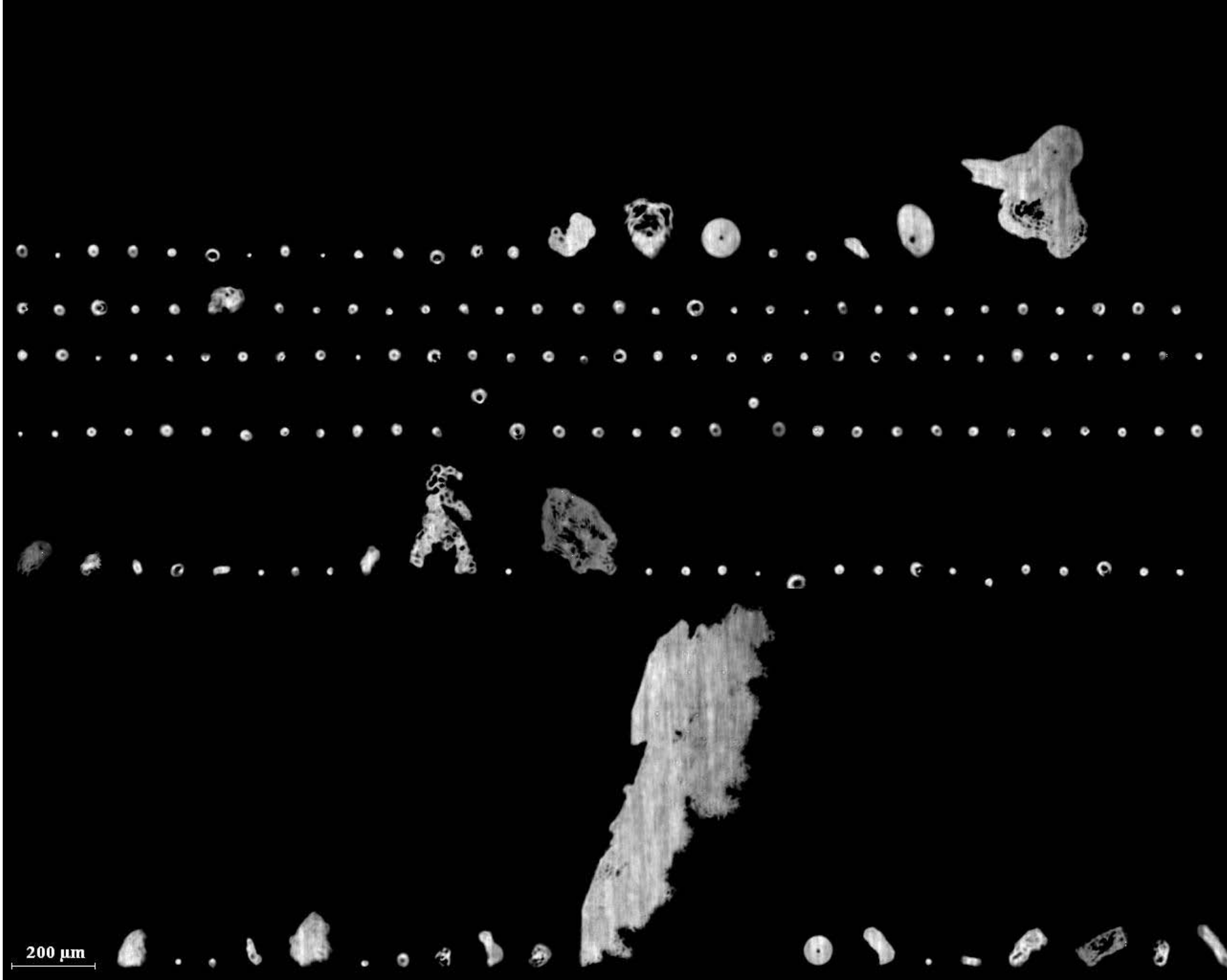


200  $\mu\text{m}$



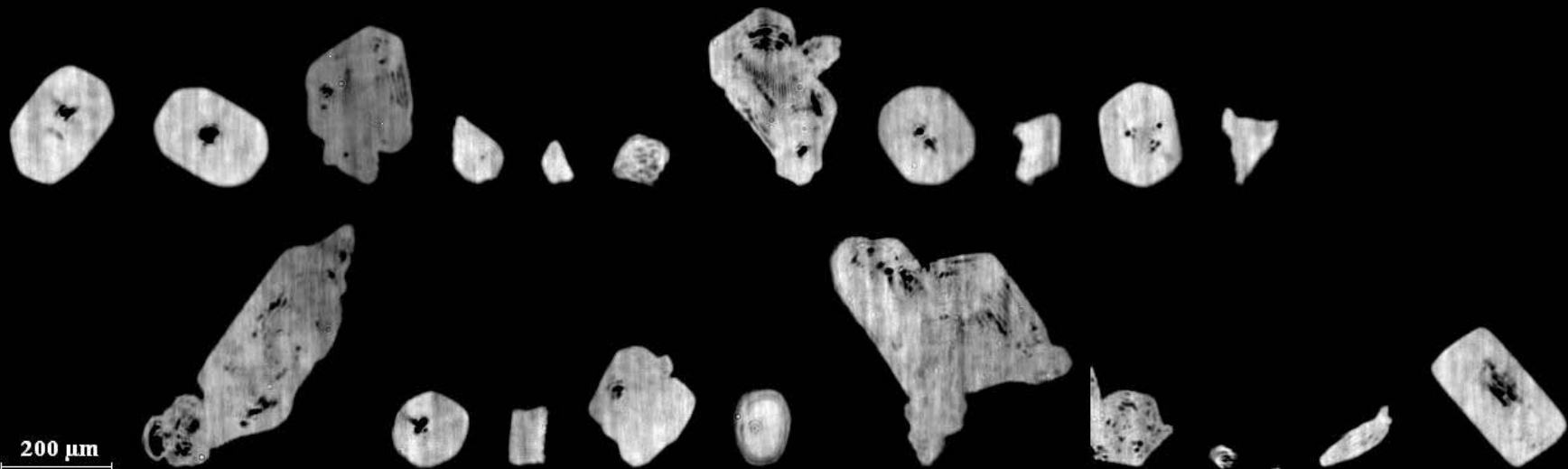
200 μm





200  $\mu\text{m}$





200  $\mu\text{m}$