

# SORPIC

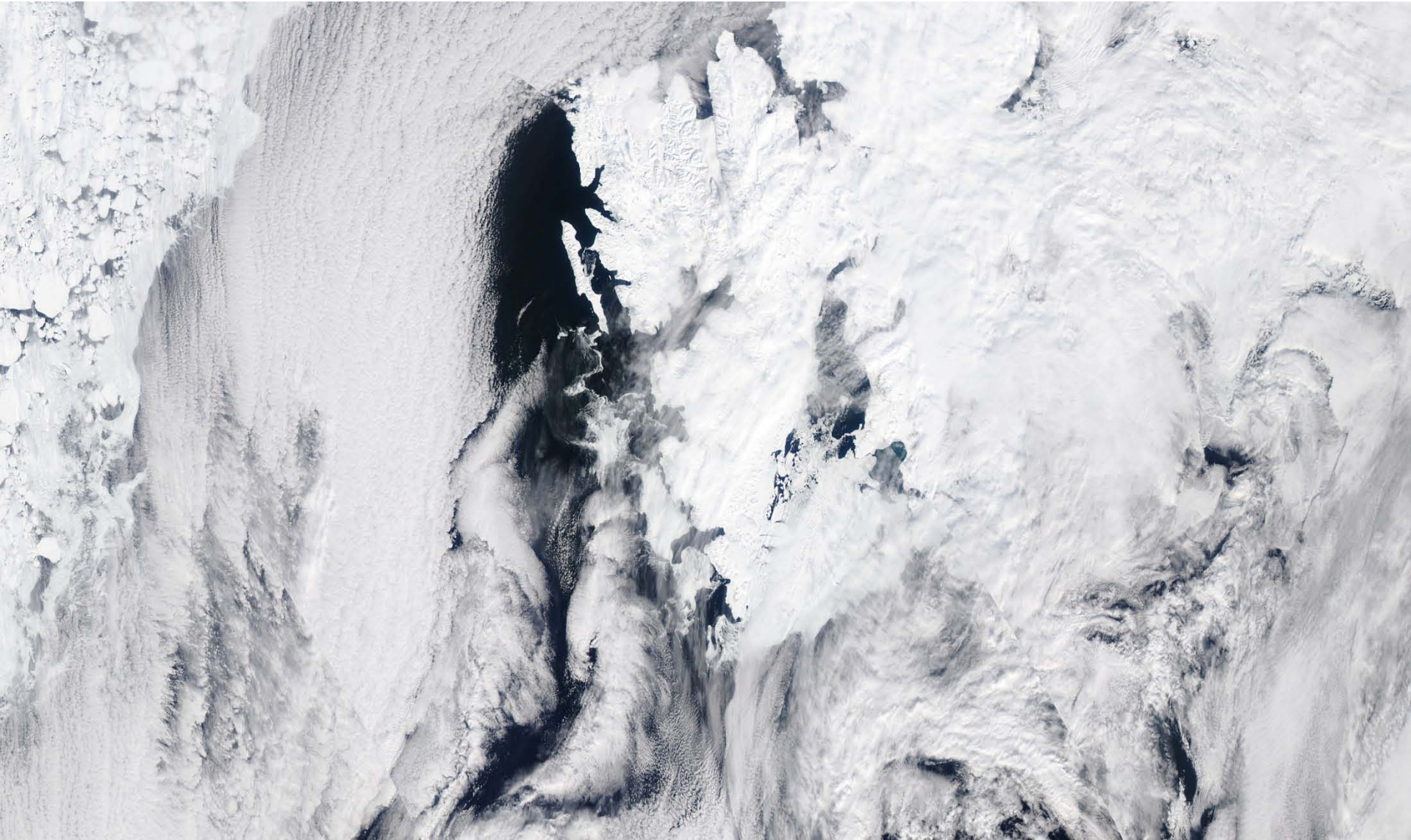
**10 May Polar 5 Flight**

*Christophe Goubeyre, Jean – François Gayet and Régis Dupuy*

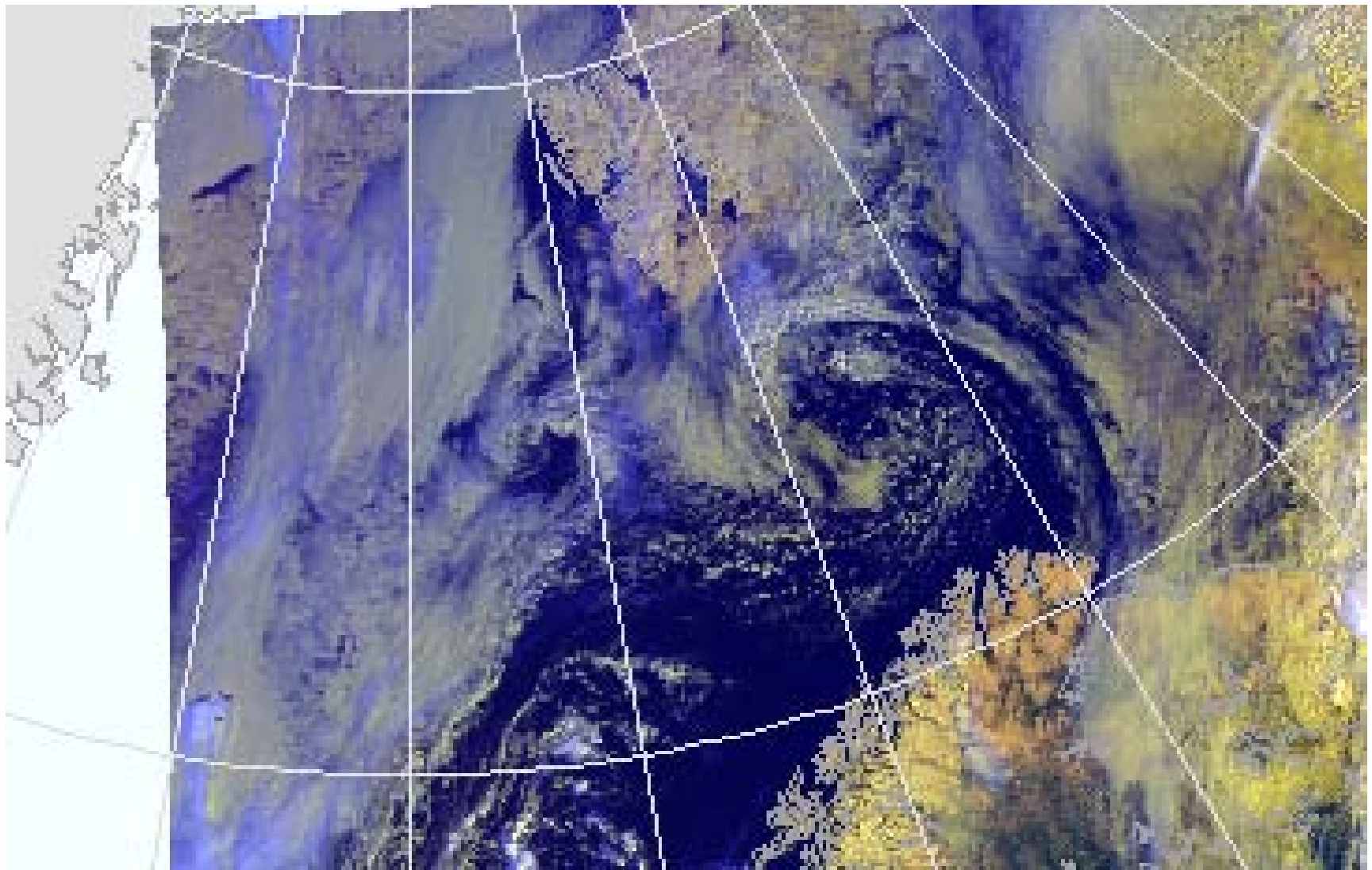
*LaMP CNRS / Université Blaise Pascal*



# MODIS : AQUA



# NOAA @ 8:32 TU

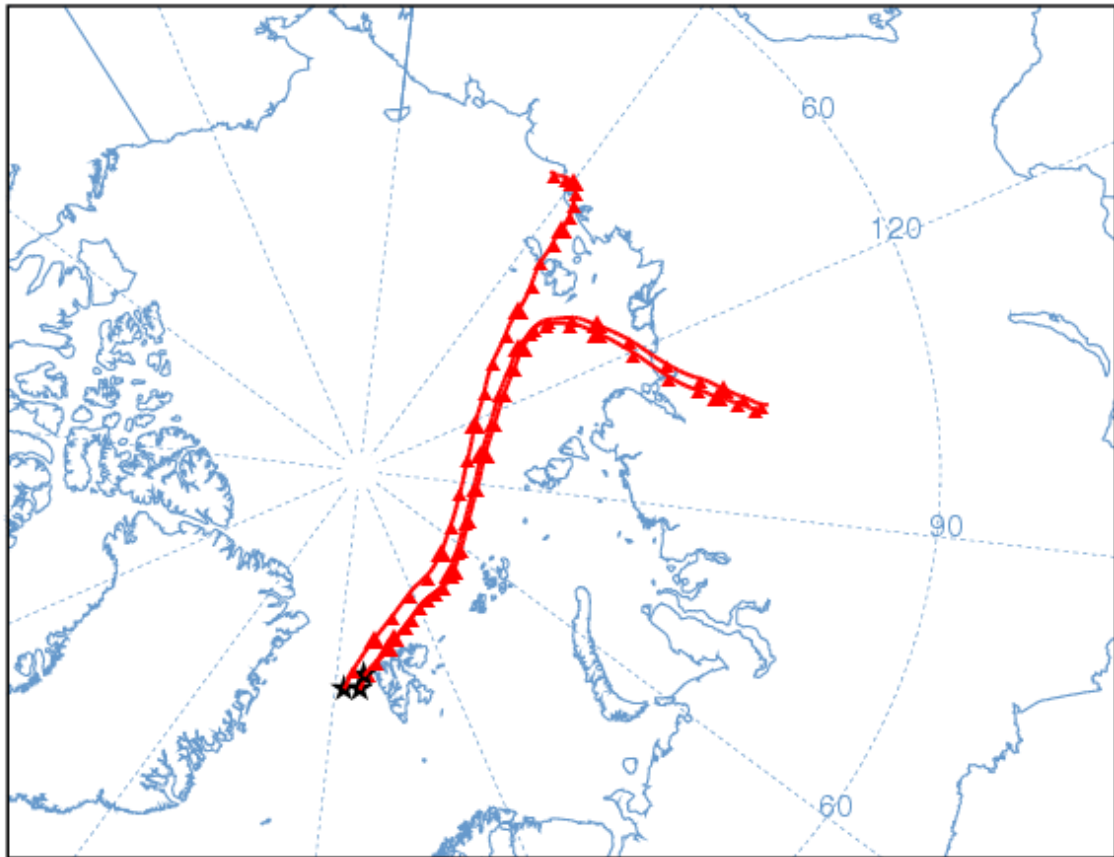


NOAA HYSPLIT MODEL

Backward trajectories ending at 0900 UTC 10 May 10

GDAS Meteorological Data

Source ★ at multiple locations



Meters AGL



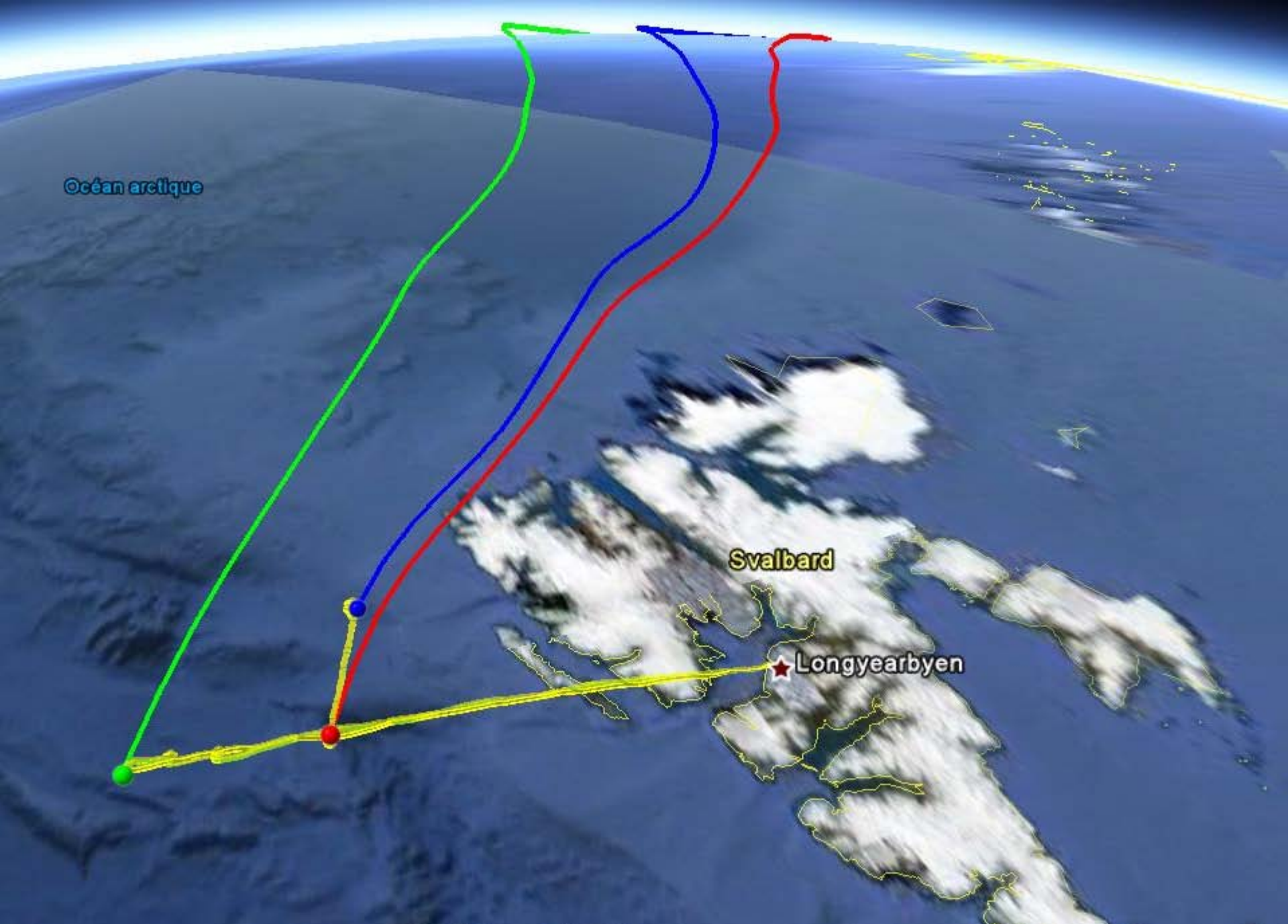
6 Days  
Backtrajectory  
End at 0900UTC

06 00 18 12 06 00 18 12 06 00 18 12 06 00 18 12 06 00 18 12 06 00 18 12 06 00 18 12  
05/10 05/09 05/08 05/07 05/06 05/05

Job ID: 31020 Job Start: Tue May 11 09:31:47 UTC 2010  
Source 1 lat.: 78.5 lon.: 6.5 height: 1000 m AMSL

Trajectory Direction: Backward Duration: 144 hrs  
Vertical Motion Calculation Method: Isobaric  
Meteorology: 0000Z 08 May 2010 - GDAS1





Océan arctique

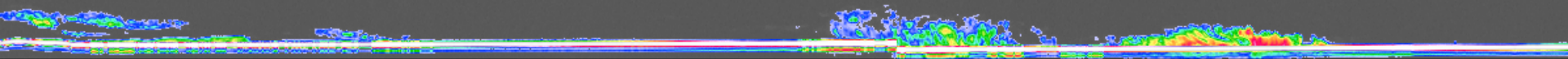
Svalbard

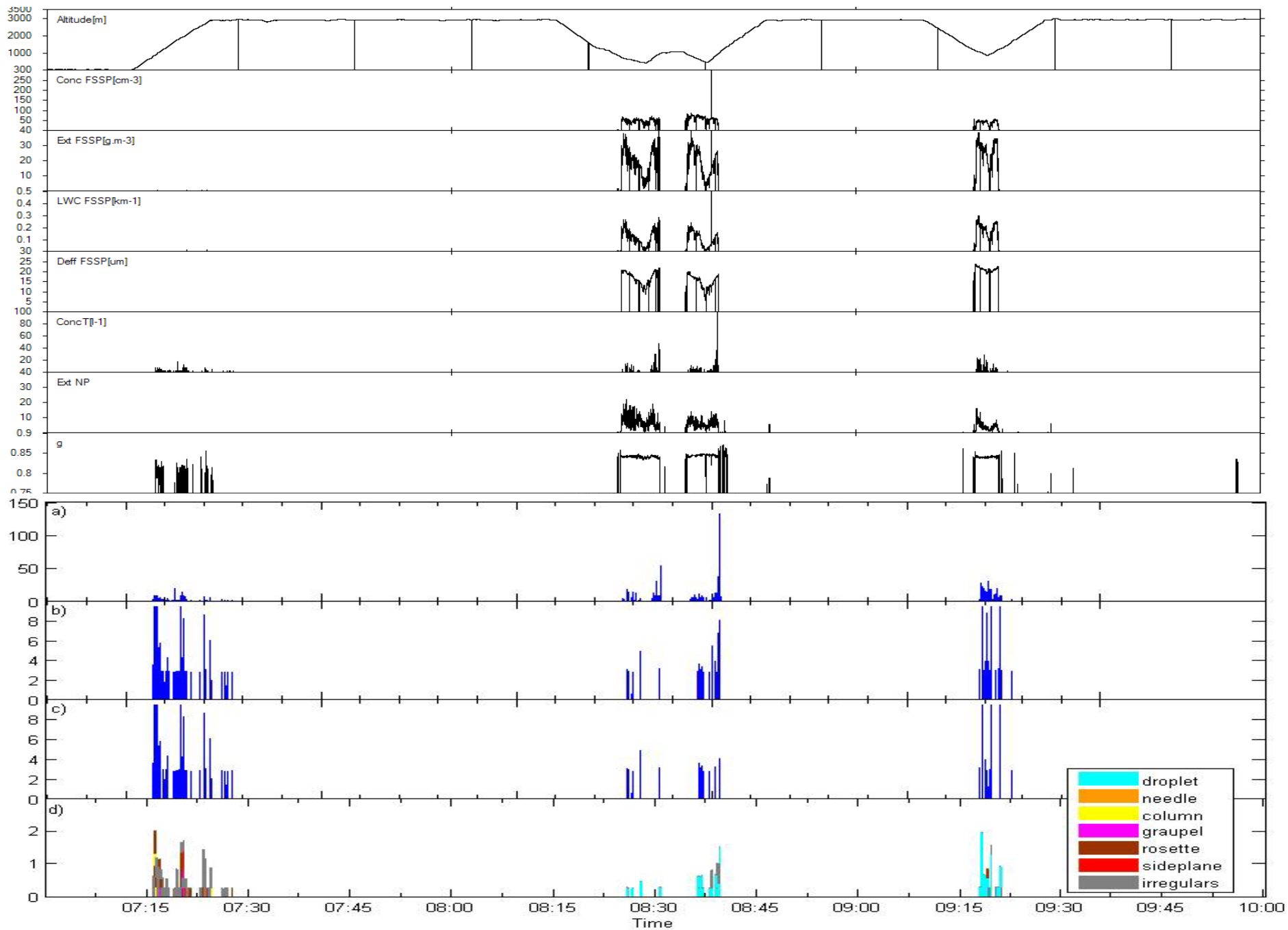
★ Longyearbyen

# CloudSat

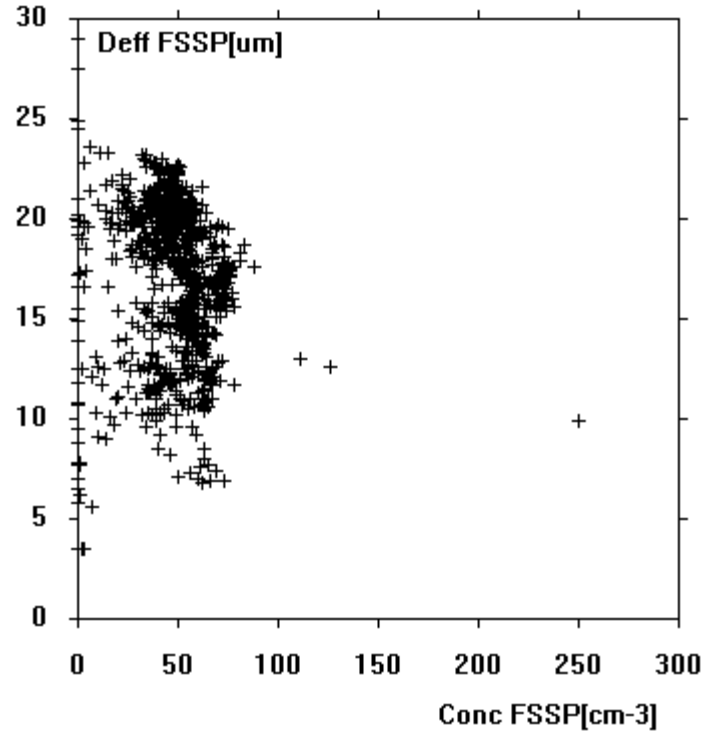
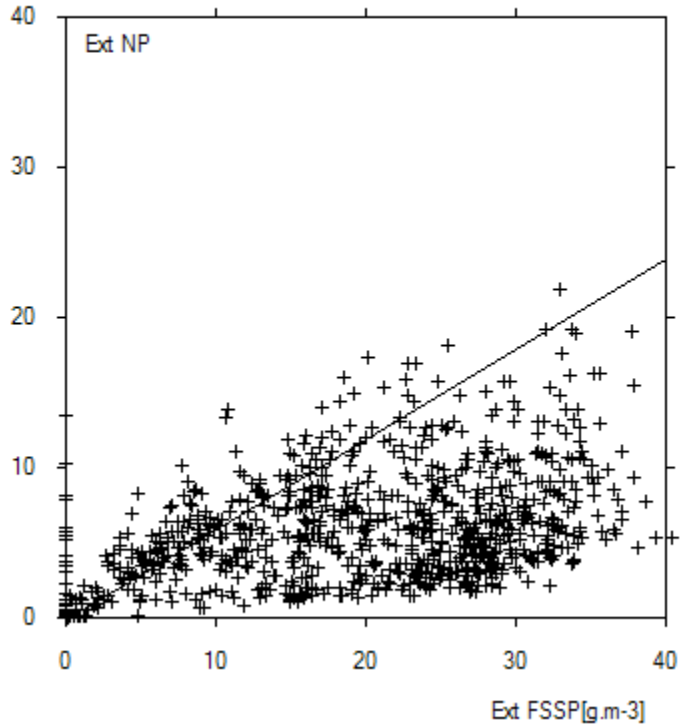


73.3000°,24.9000° — 81.3000°,-16.8000° : 1300.0 km / 807.93 miles (great circle distance) [www.movable-type.co.uk/scripts/latlong.html](http://www.movable-type.co.uk/scripts/latlong.html)

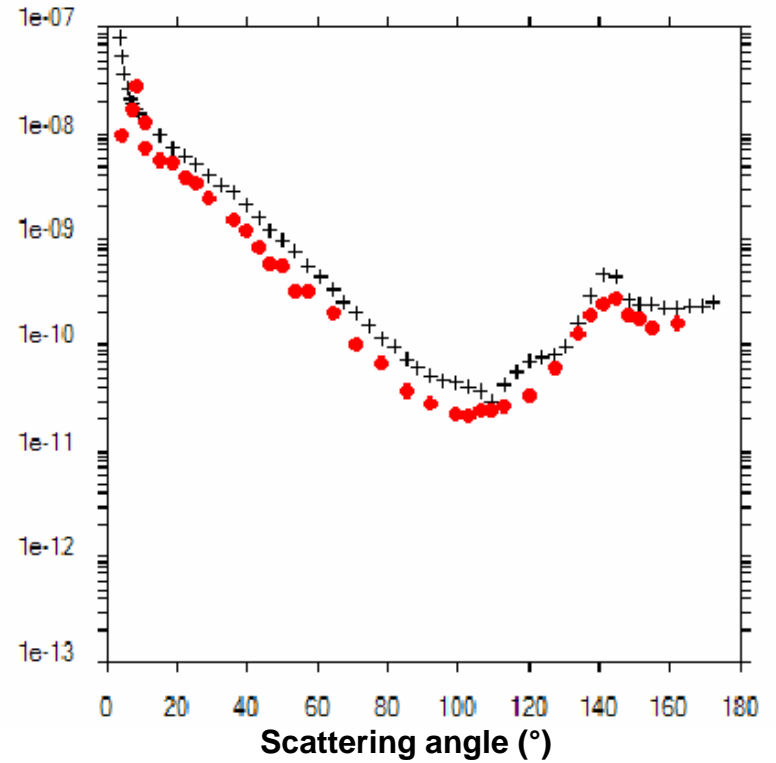
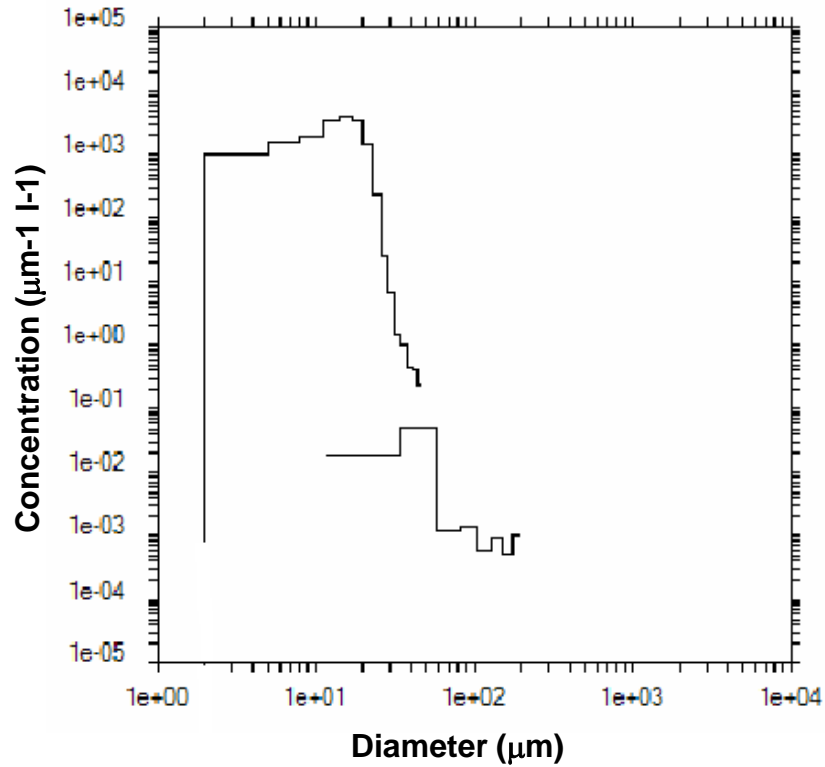




E:\100910\100510.mix - 70000 à 100000







Conc = 50 cm<sup>-3</sup>

LWC = 0.11 g/m<sup>3</sup>

Ext = 18 km<sup>-1</sup>

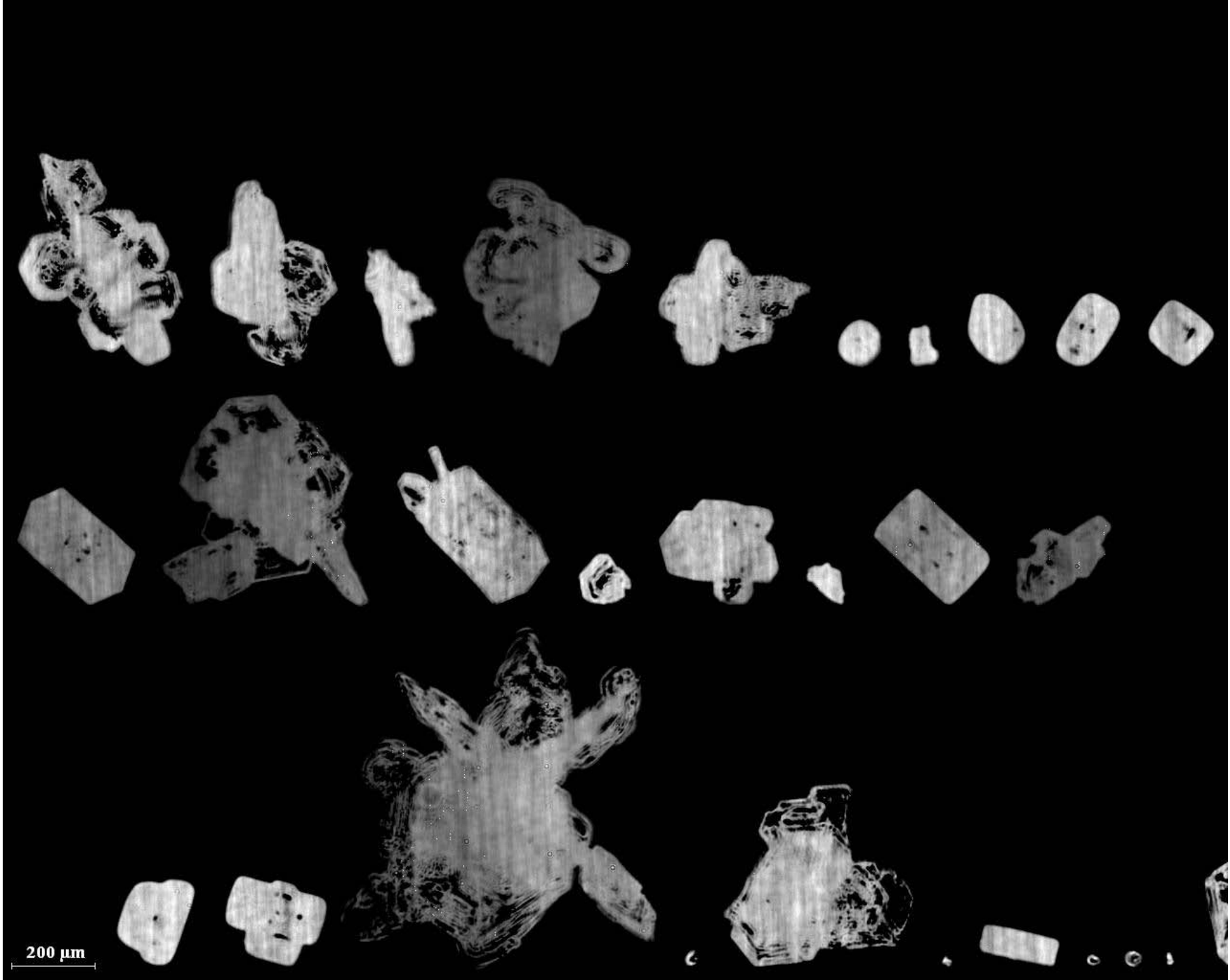
Deff = 15 μm

CCPI = 0.1. l-1

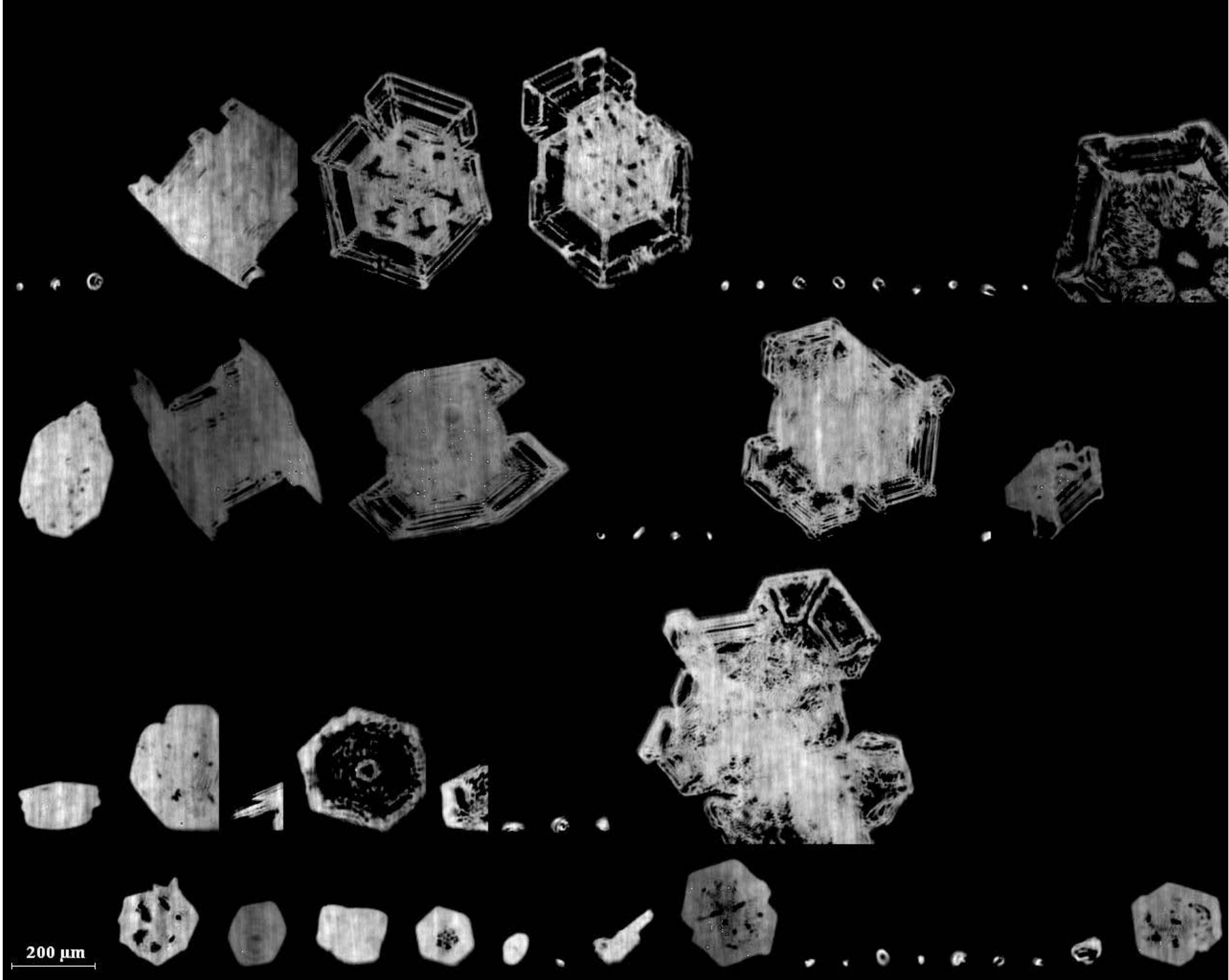
g = 0.842

10 May

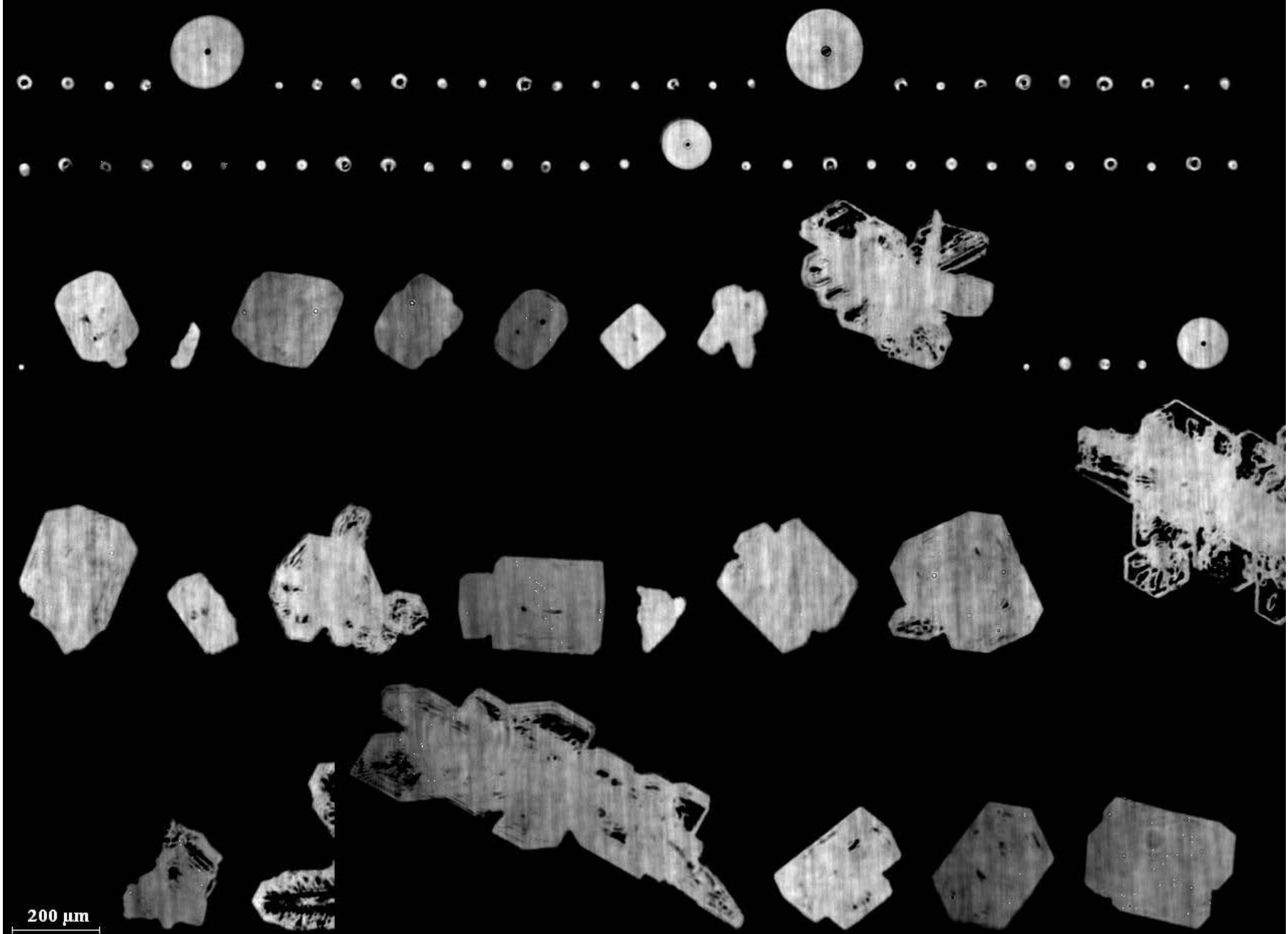
CPI images

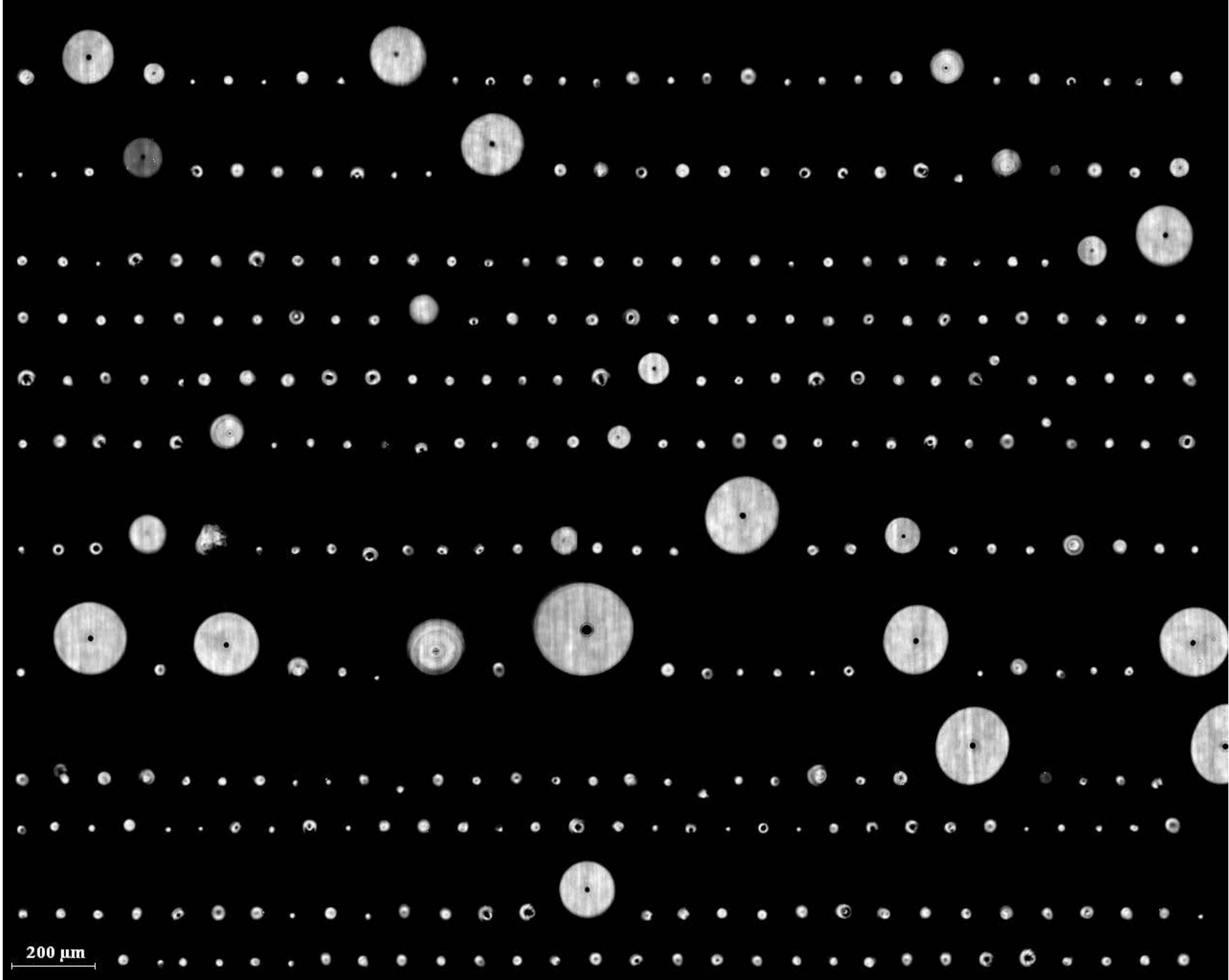


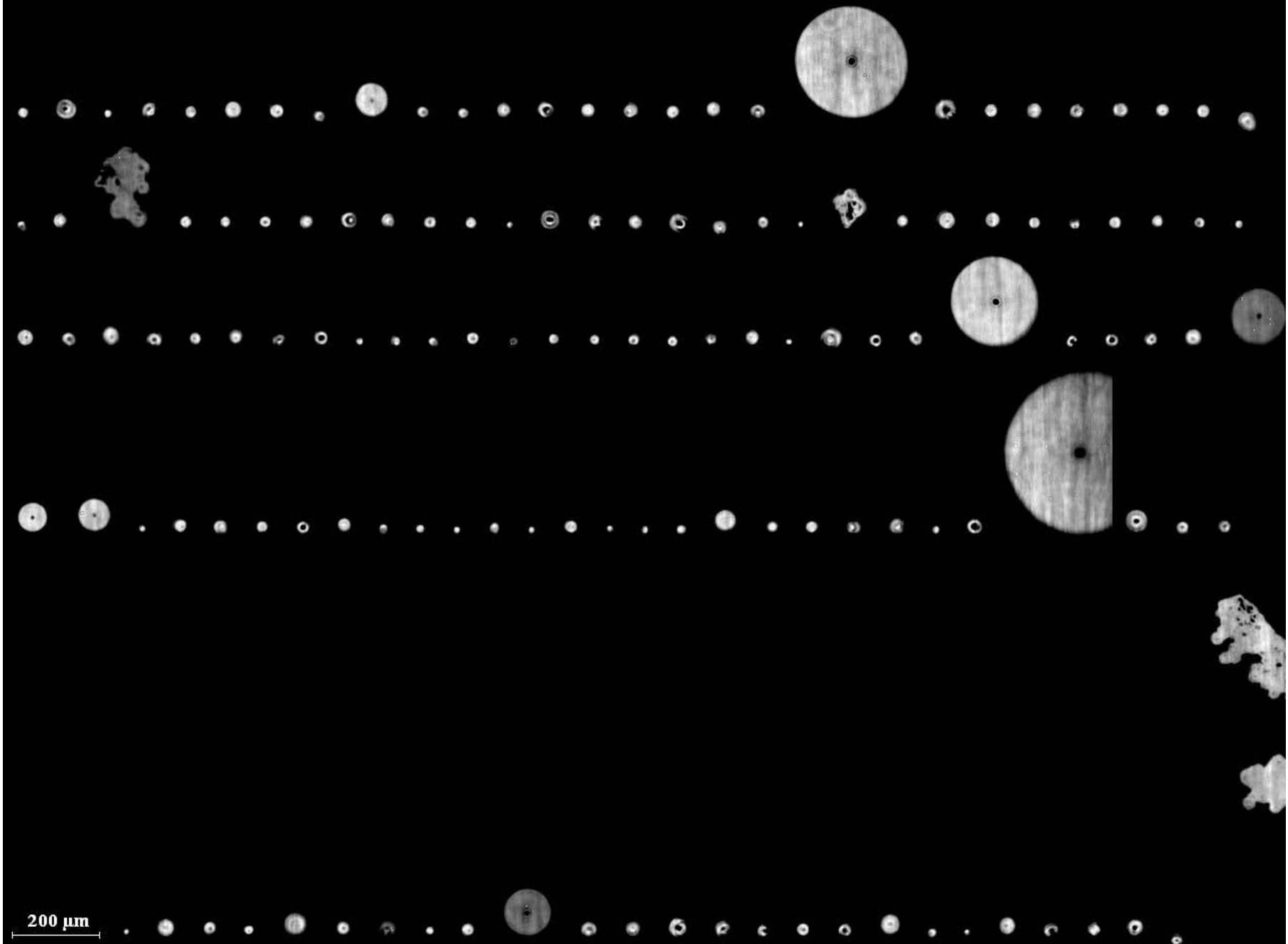
200  $\mu\text{m}$











200  $\mu\text{m}$

