

SORPIC

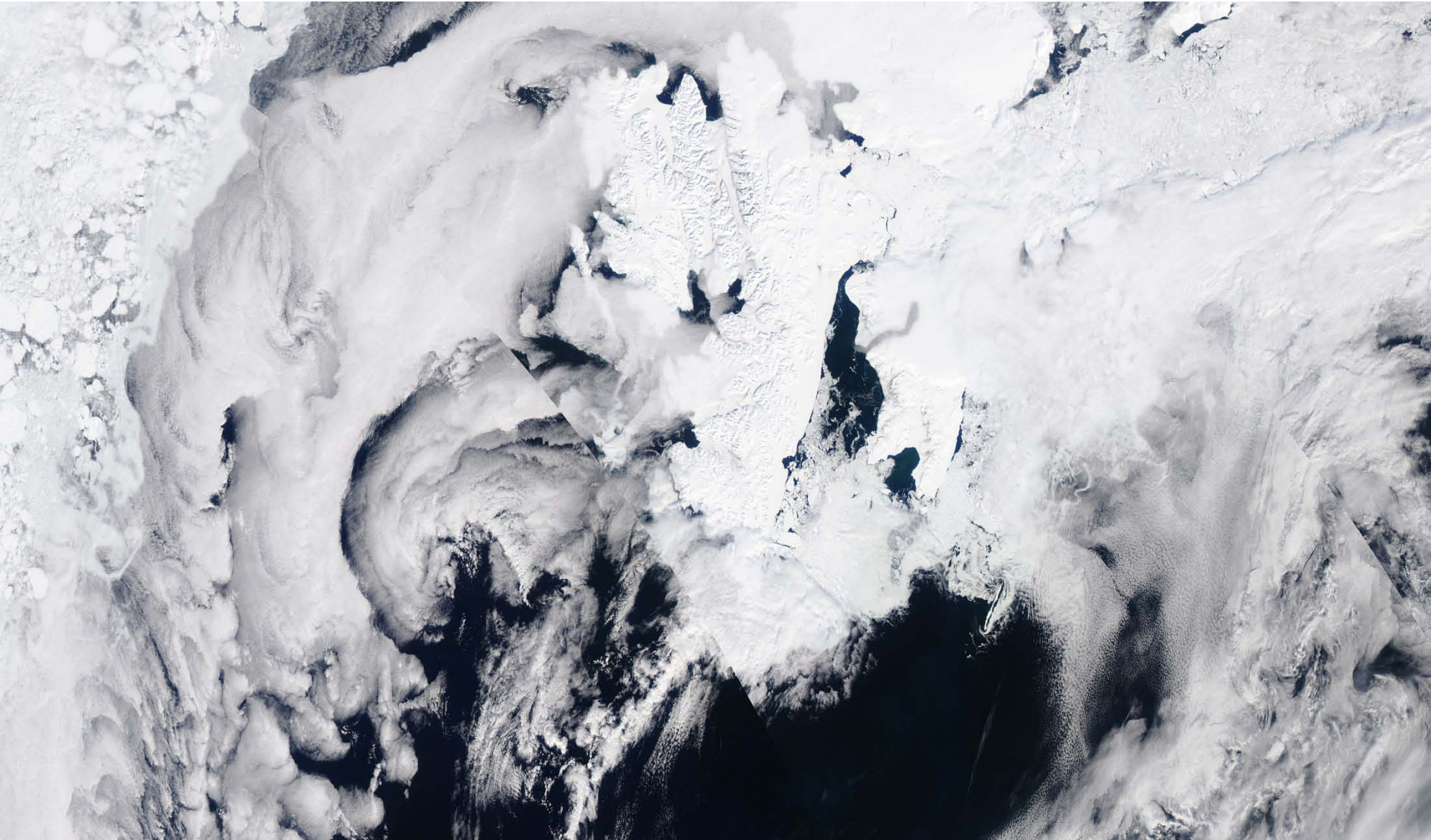
11 May Polar 5 Flight

Christophe Gurbeyre, Jean – François Gayet and Régis Dupuy

LaMP CNRS / Université Blaise Pascal



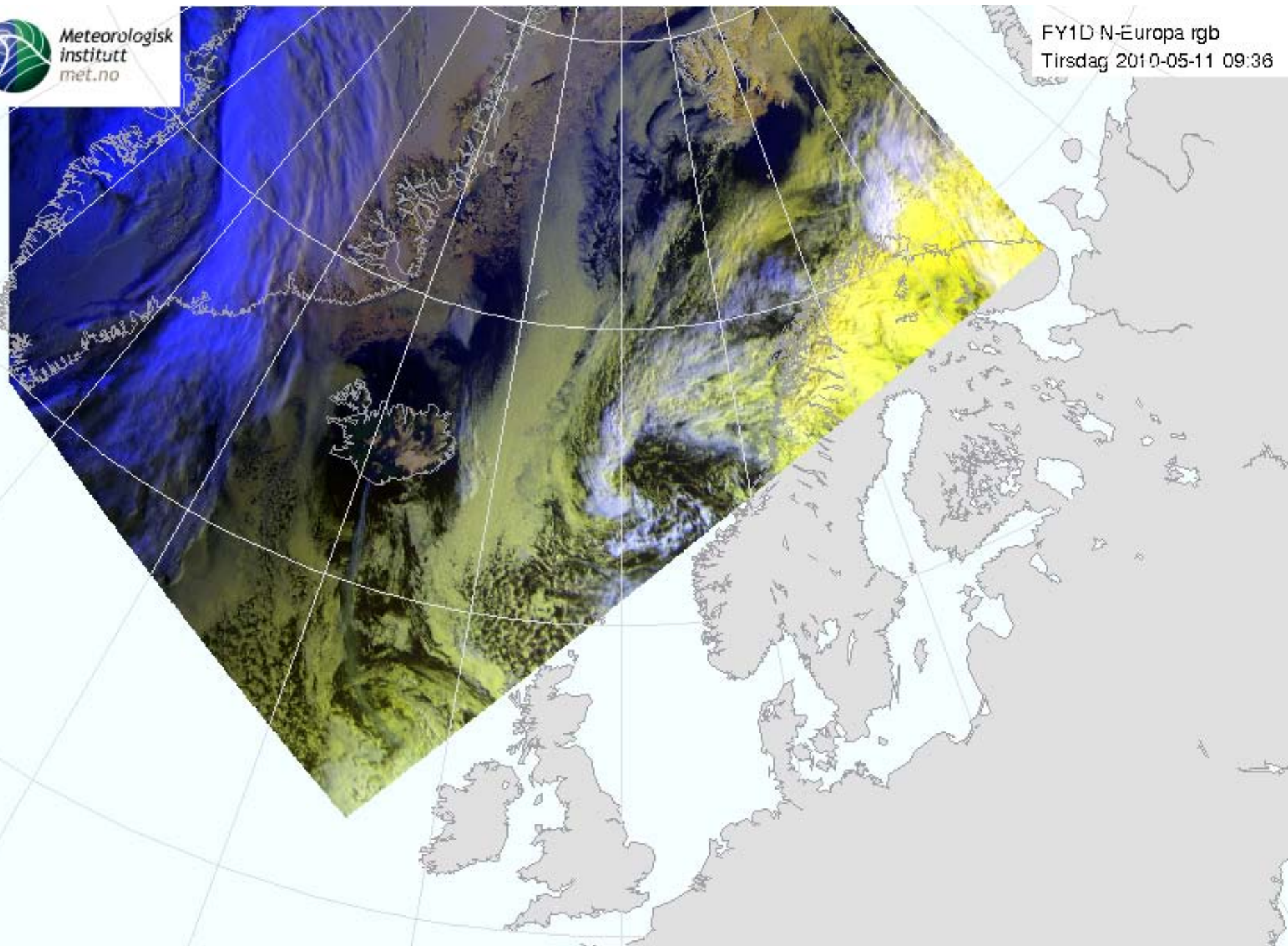
MODIS : AQUA





Meteorologisk
institutt
met.no

FY1D N-Europa rgb
Tirsdag 2010-05-11 09:36

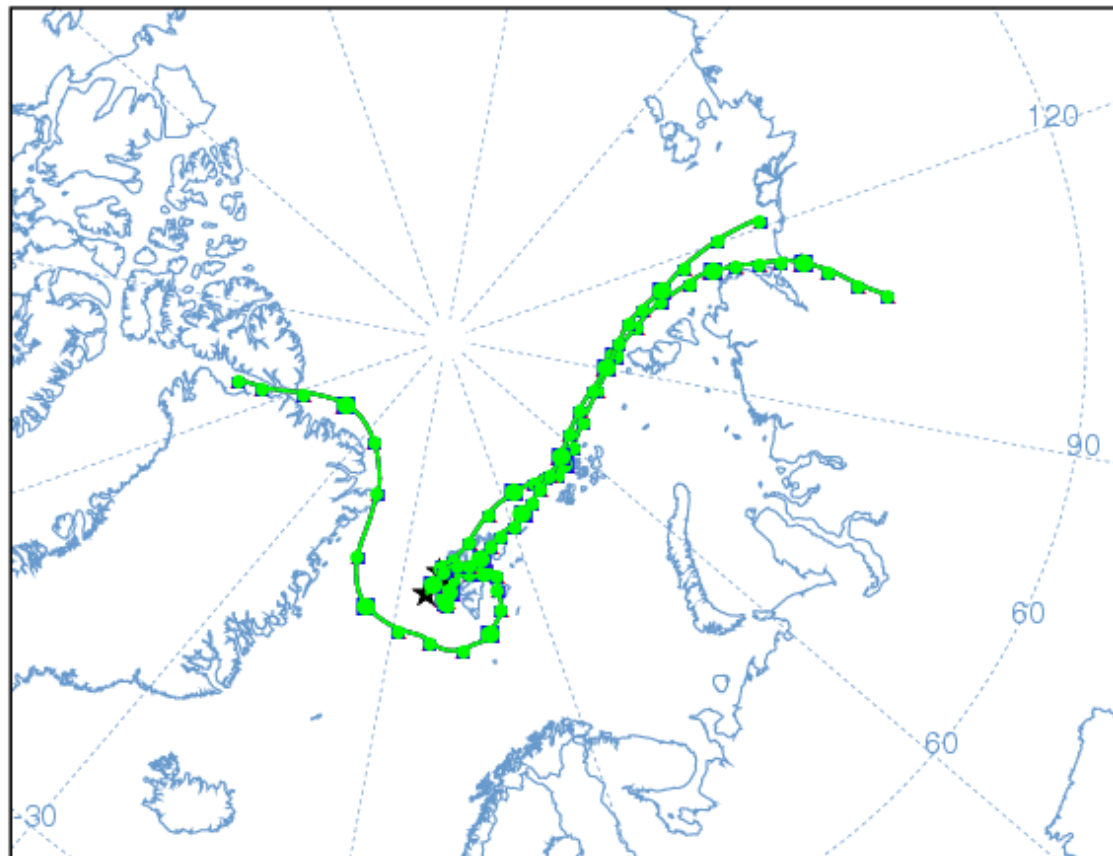


NOAA HYSPLIT MODEL

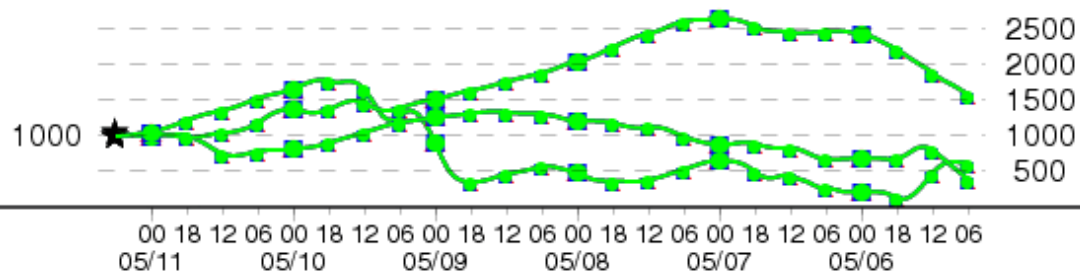
Backward trajectories ending at 0600 UTC 11 May 10

GDAS Meteorological Data

Source ★ at multiple locations



Meters AGL



Backtrajectories

Source 1 : 78N 10.48333E

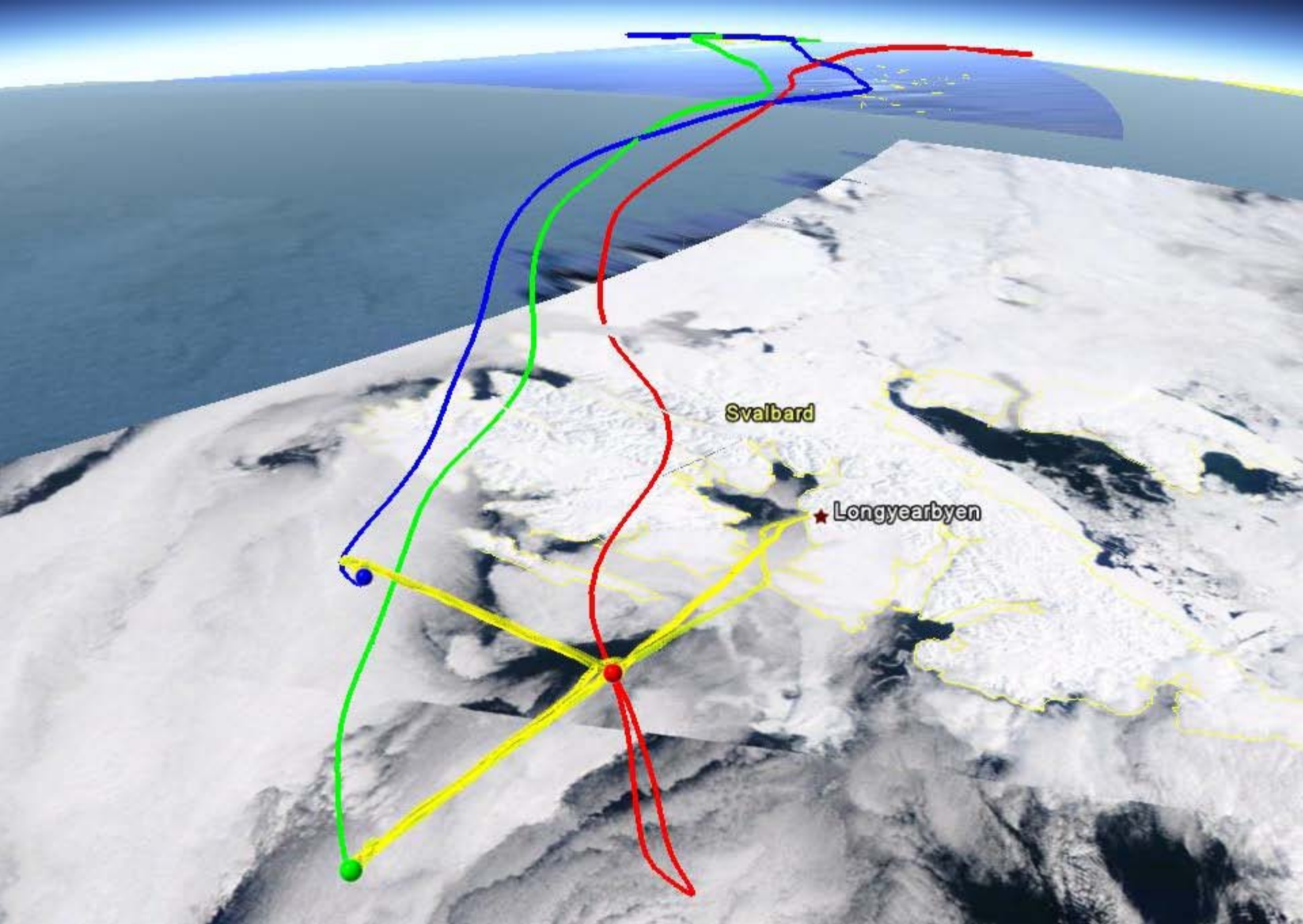
Source 2 : 78.8333N 8.66667 E

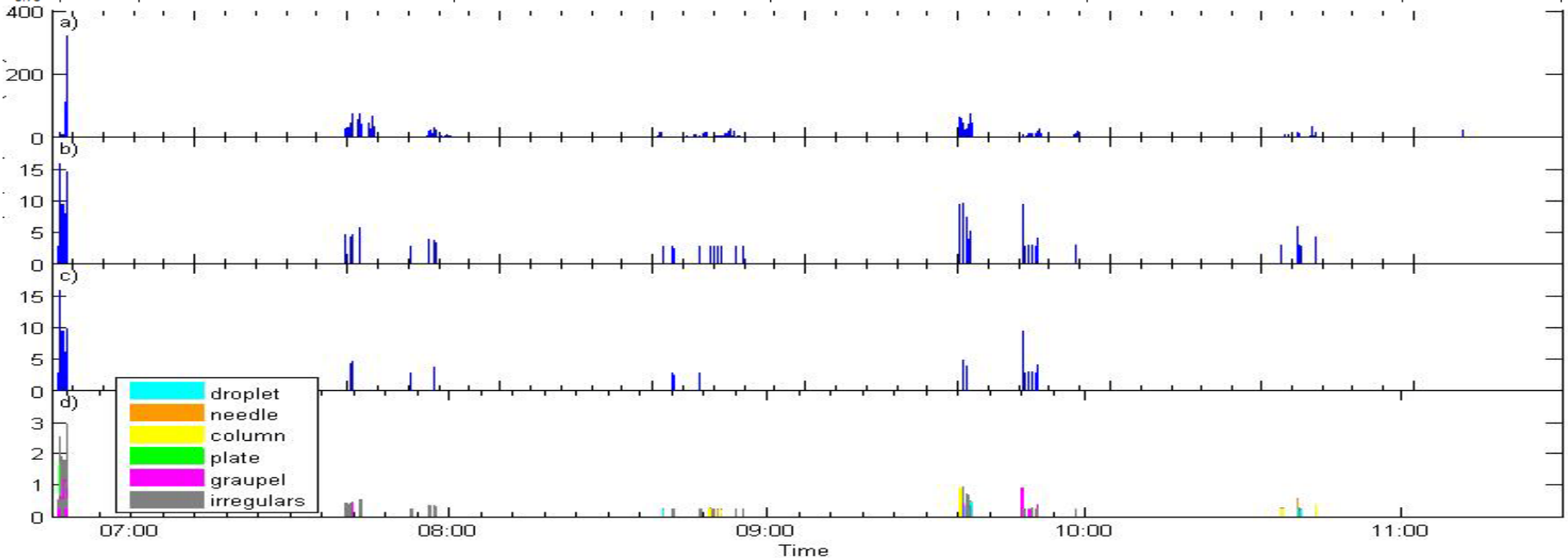
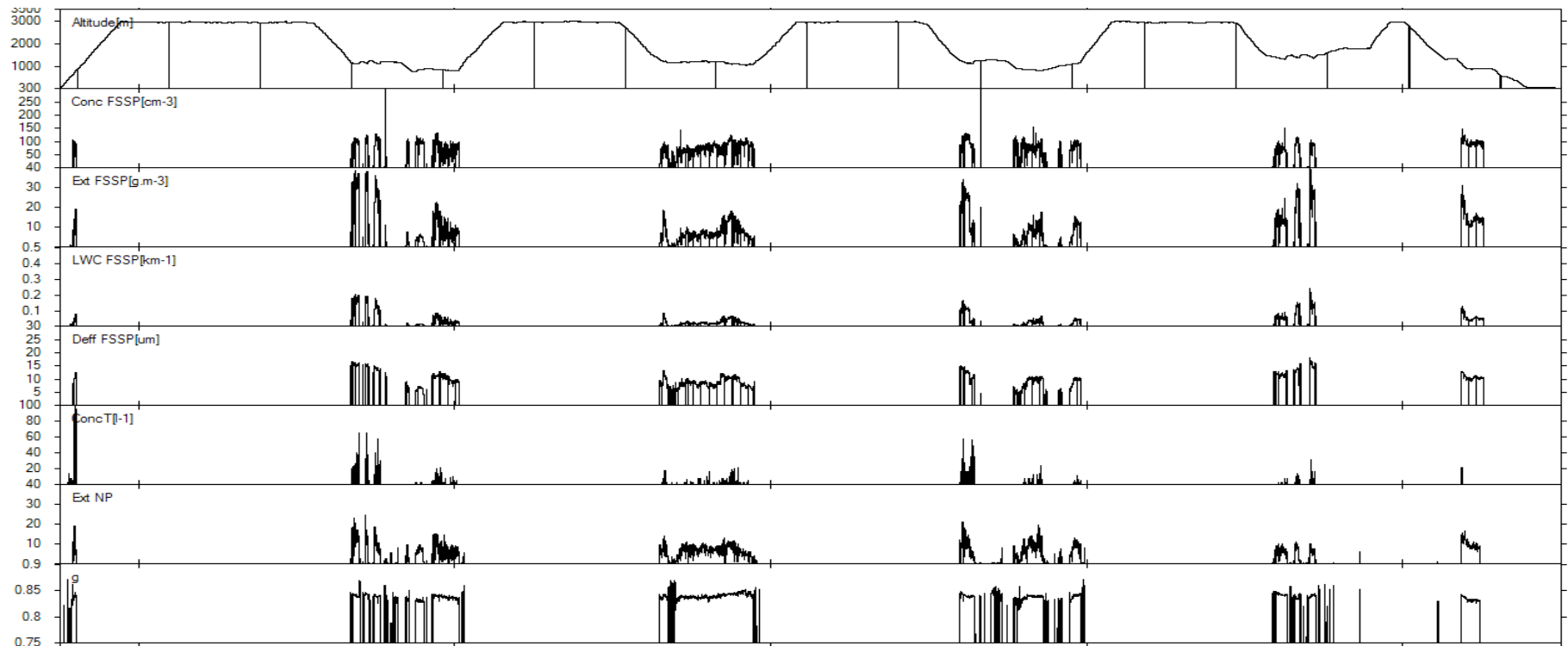
Source 3 : 78.75N 6.08333E

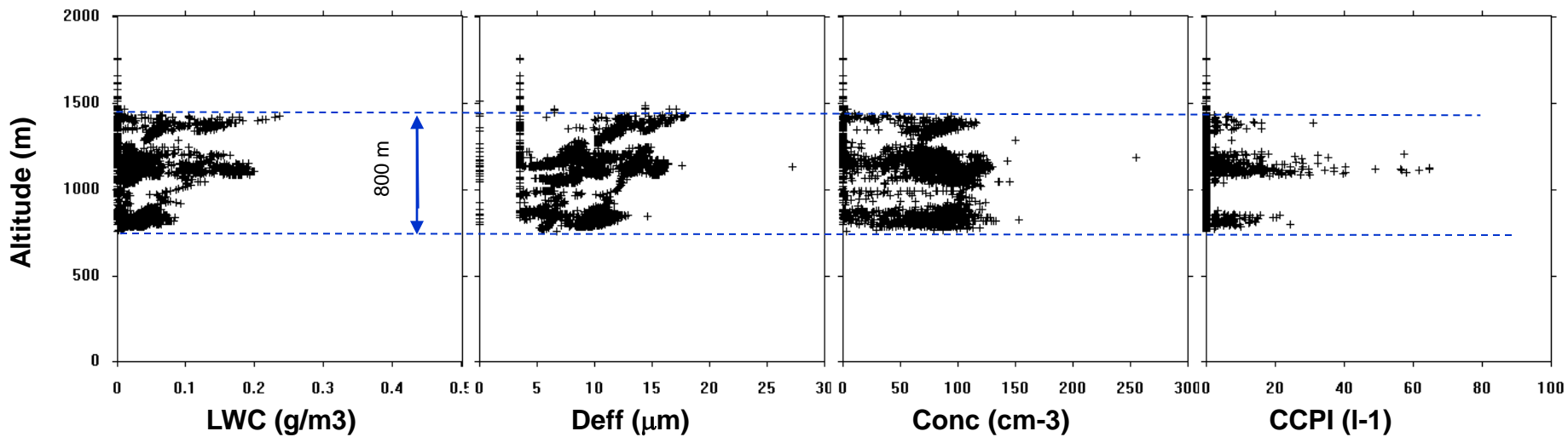
6 days back

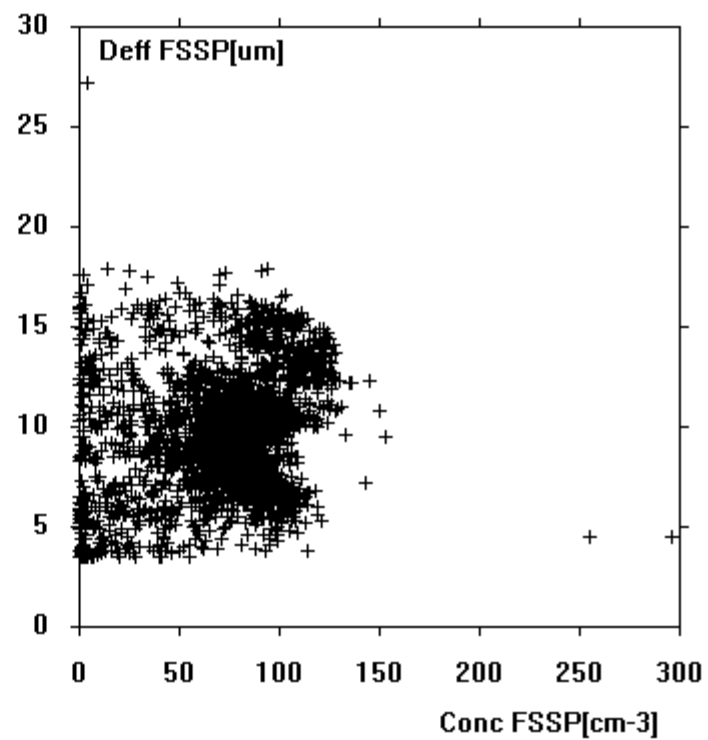
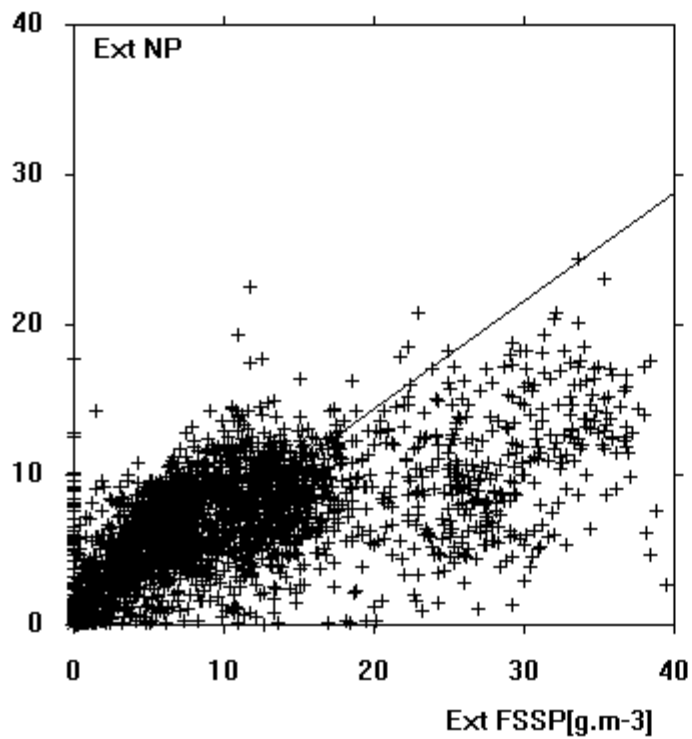
Job ID: 38621 Job Start: Tue May 11 14:54:36 UTC 2010
 Source 1 lat.: 78 lon.: 10.48333 hgts: 1000, 1000, 1000 m AMSL

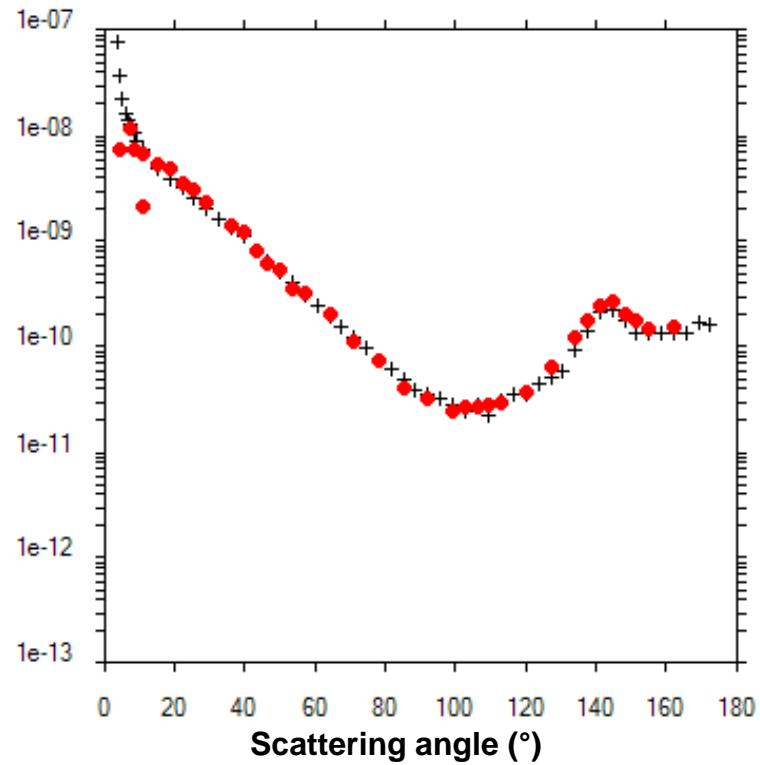
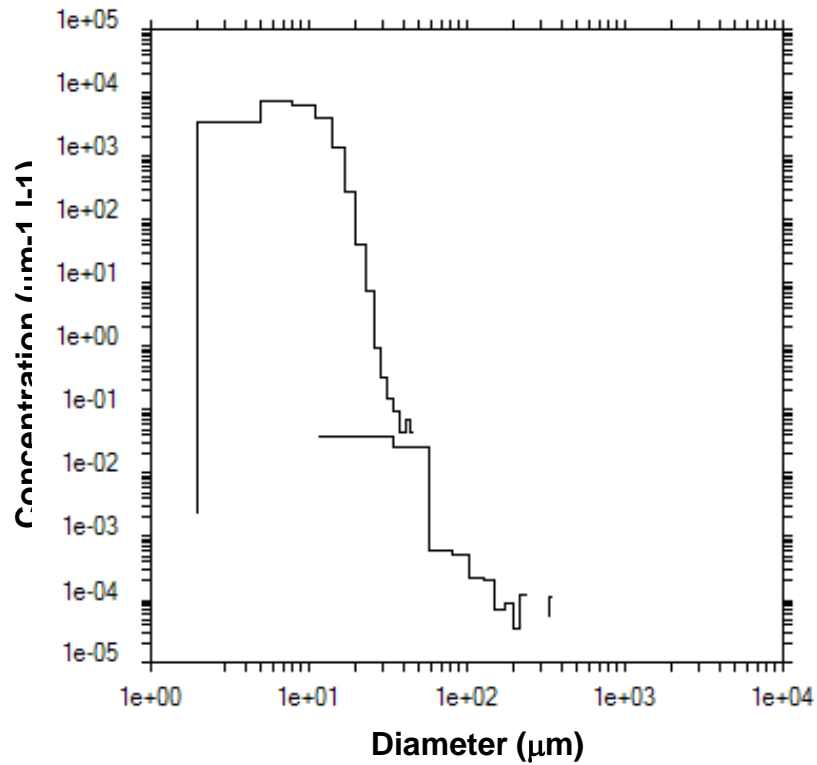
Trajectory Direction: Backward Duration: 144 hrs
 Vertical Motion Calculation Method: Model Vertical Velocity
 Meteorology: 0000Z 08 May 2010 - GDAS1











Conc = 70 cm⁻³

LWC = 0.04 g/m³

Ext = 9 km⁻¹

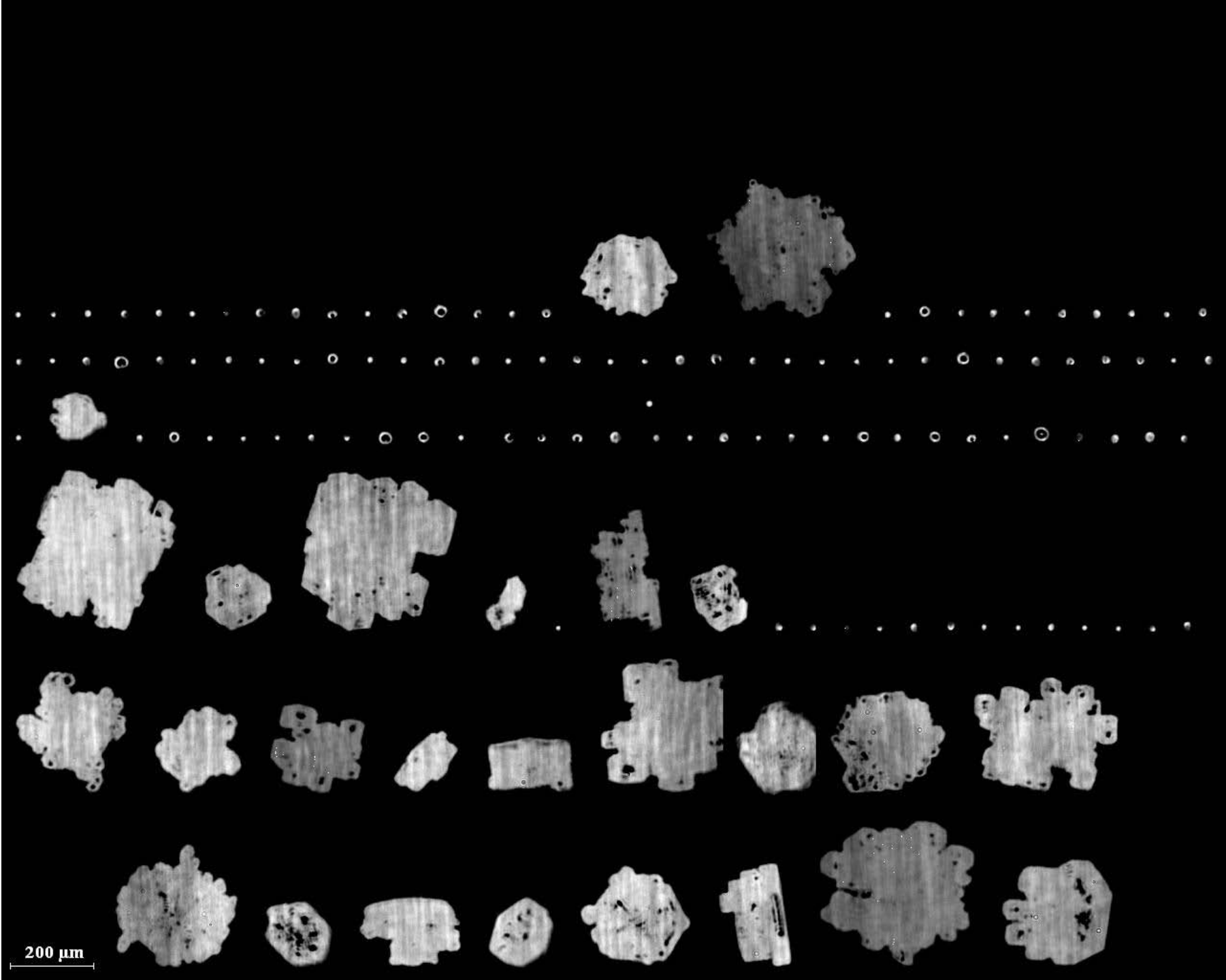
Deff = 9 µm

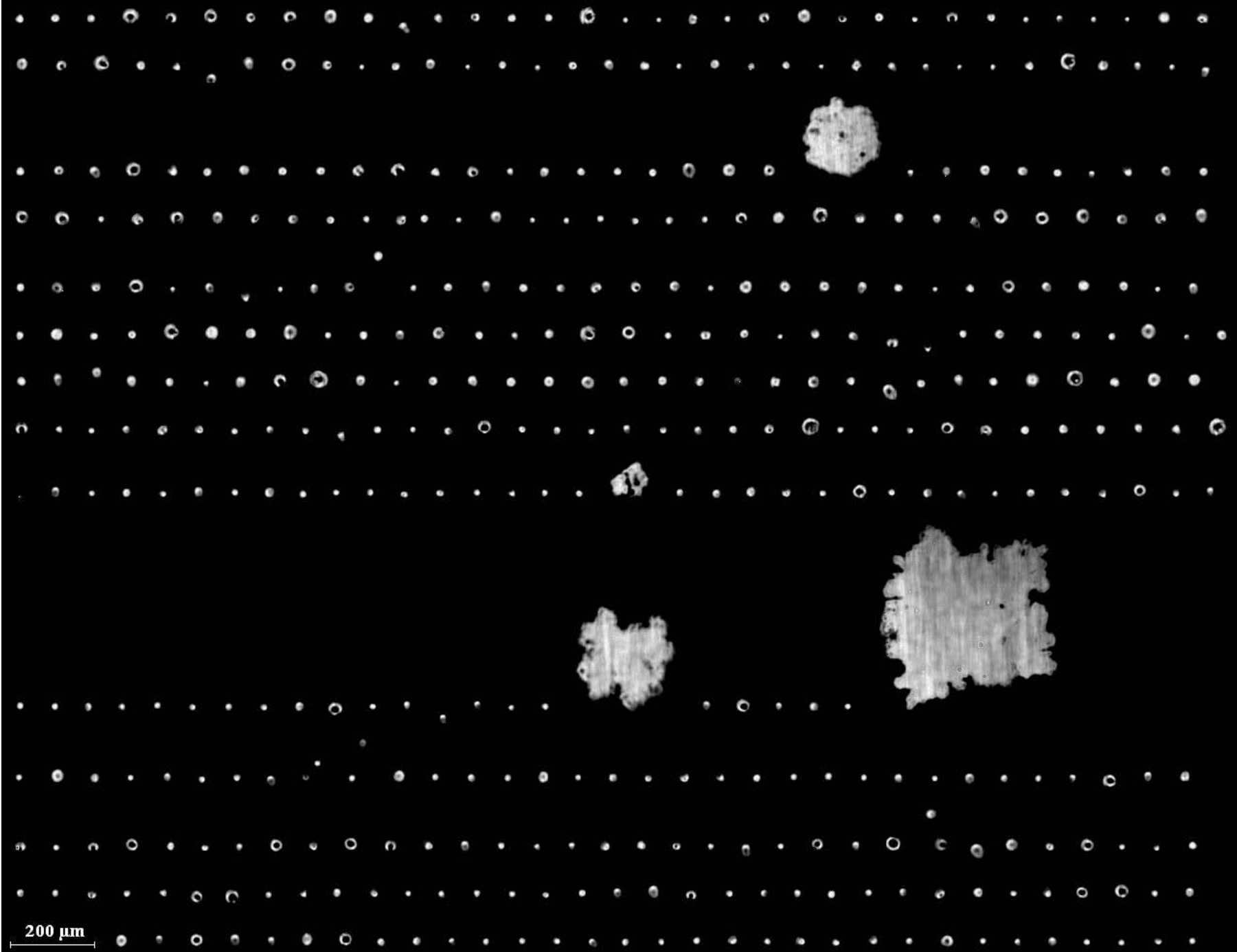
CCPI = 0.0 l⁻¹

g = 0.837

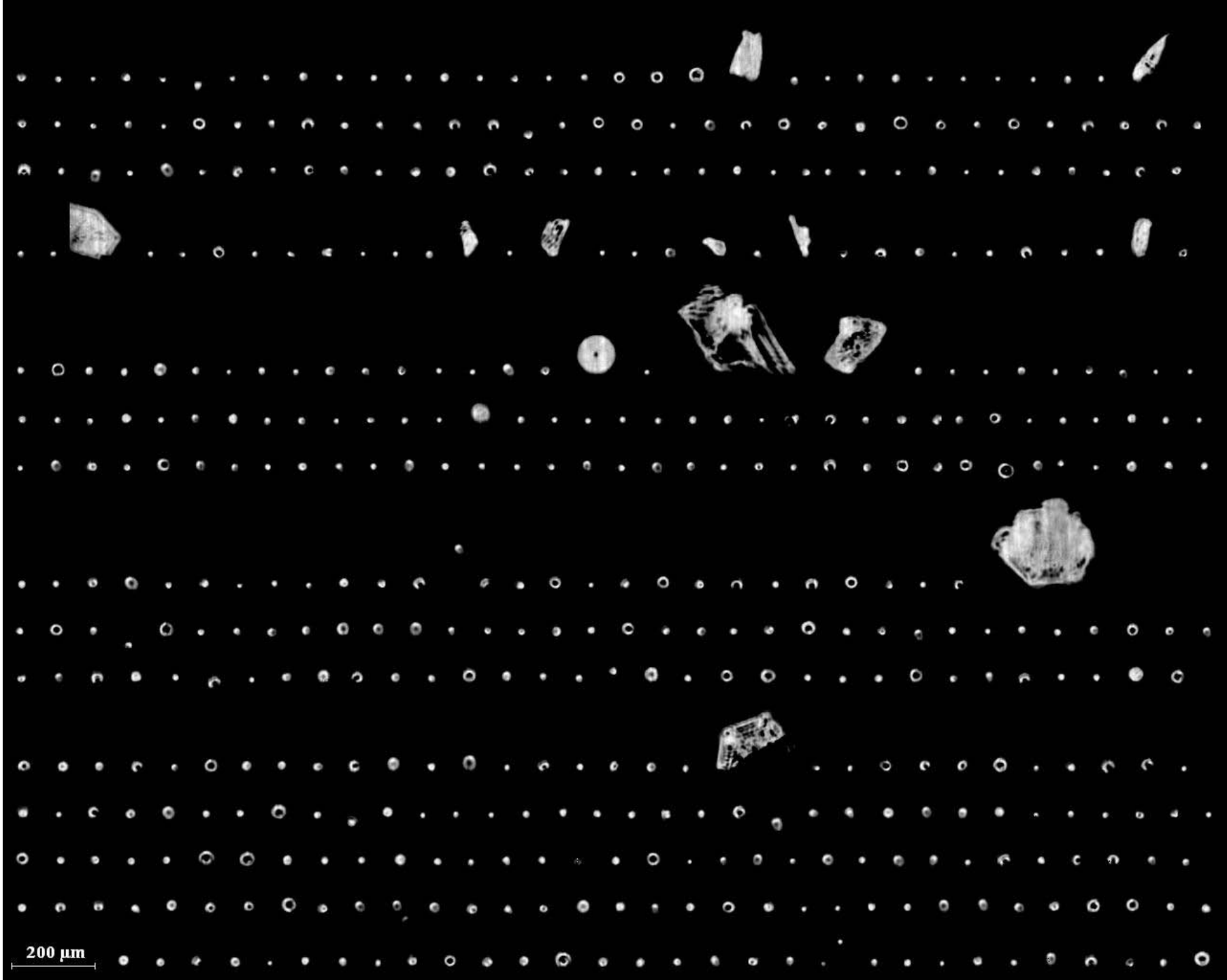
11 May

CPI images

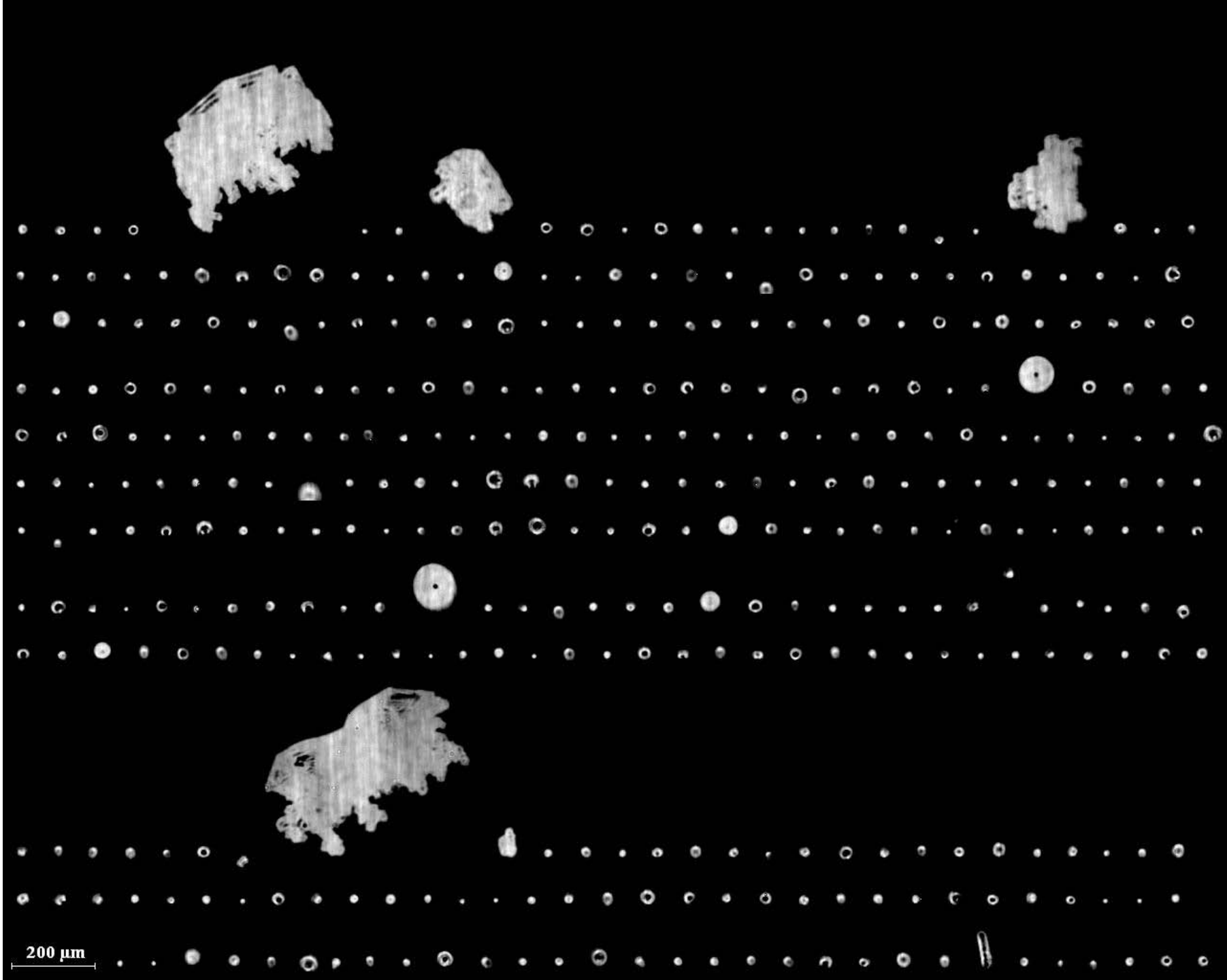


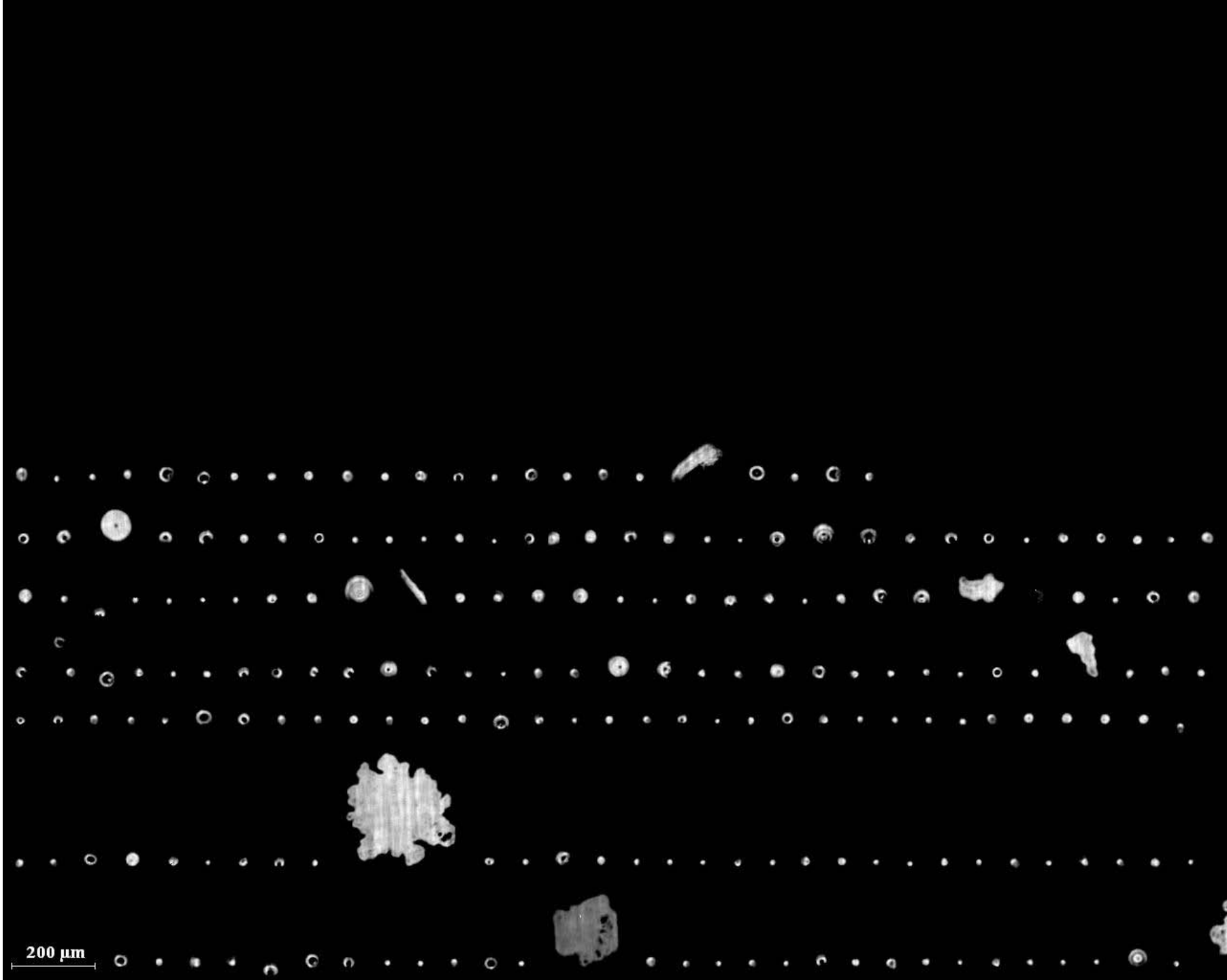


200 μm



200 μm





200 μm