


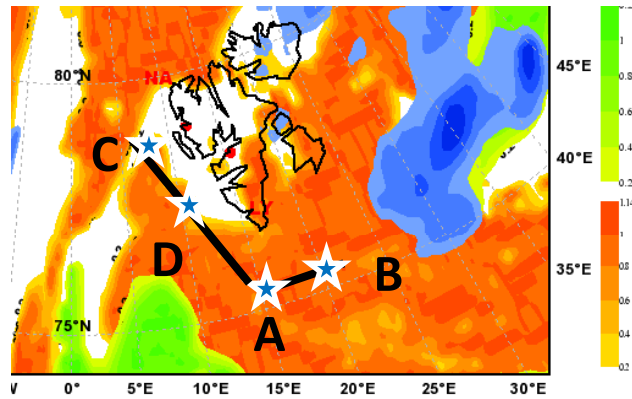






1. Start to Pt. A: **N 76° 33' 2" E 7° 10' 22"**
2. Leg 1 to Pt. B: **N 80° 00' 00" E 7° 0' 00"**
 Remote Sensing 7000 ft, C-20min-C 
3. Leg 2 to Pt. A
 In Situ into cloud top 
 A-Train: 10:50 UTC
4. Leg 3 to Pt. B: 
 Remote Sensing 7000 ft, C-20min-C
5. **Ny Alesund N 78° 55' 26" E 11° 57' 1"**
6. **Longyearbyen**

**Operators: Martin Gehrman,
 Franzi Nehring
 Roland Neuber
 Christophe Goubeyre
 Eike Bierwirth**



1. Start to Pt. A: **N 76° 00' 00"** **E 15° 0' 00"**
2. Leg 1 to Pt. B: **N 76° 00' 00"** **E 10° 0' 00"**
 Remote Sensing 7000 ft, C-20min-C 
3. Leg 2 to Pt. A
 In Situ into cloud top 
4. Leg 3 to Pt. C: **N 78° 00' 00"** **E 10° 0' 00"**
 Remote Sensing 7000 ft, C-30min-C 
5. Leg 4 return to D: with 
6. Leg 5 return to C: at 7000 ft
7. Ny Alesund **N 78° 55' 26"** **E 11° 57' 1"**
8. Longyearbyen

**Operators: Martin Gehrman,
 Franzi Nehring
 Roland Neuber
 Christophe Gourbeyre
 Eike Bierwirth**