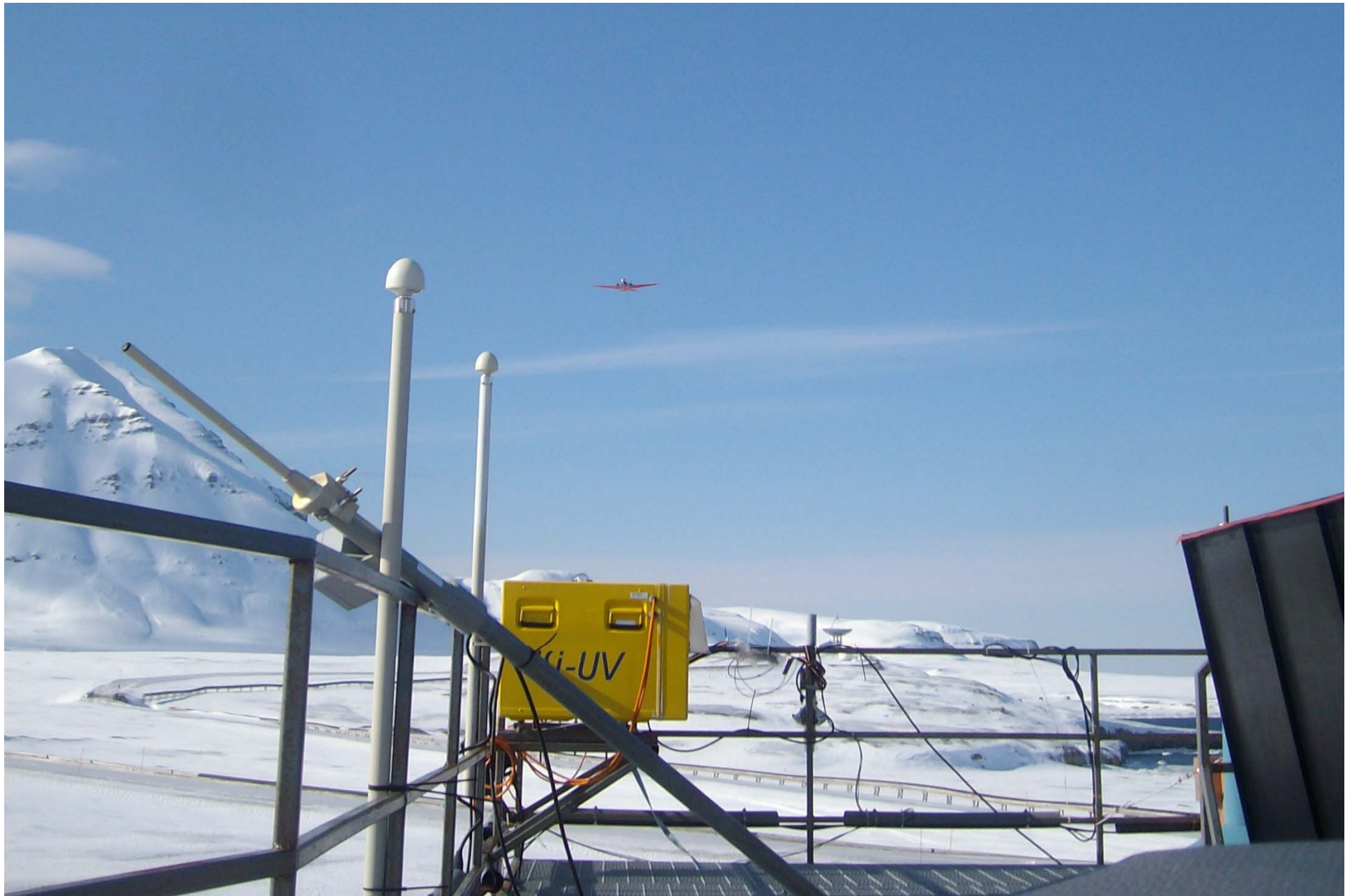
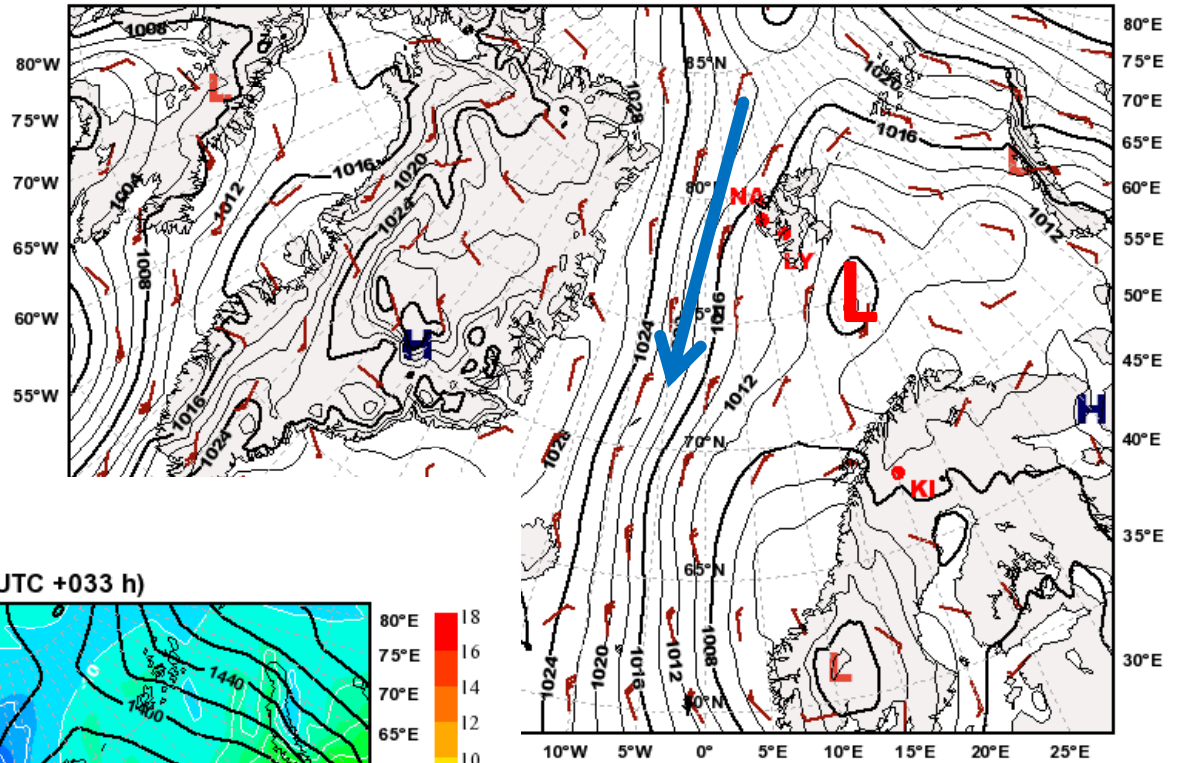


Debriefing and weather briefing 9 May 2010

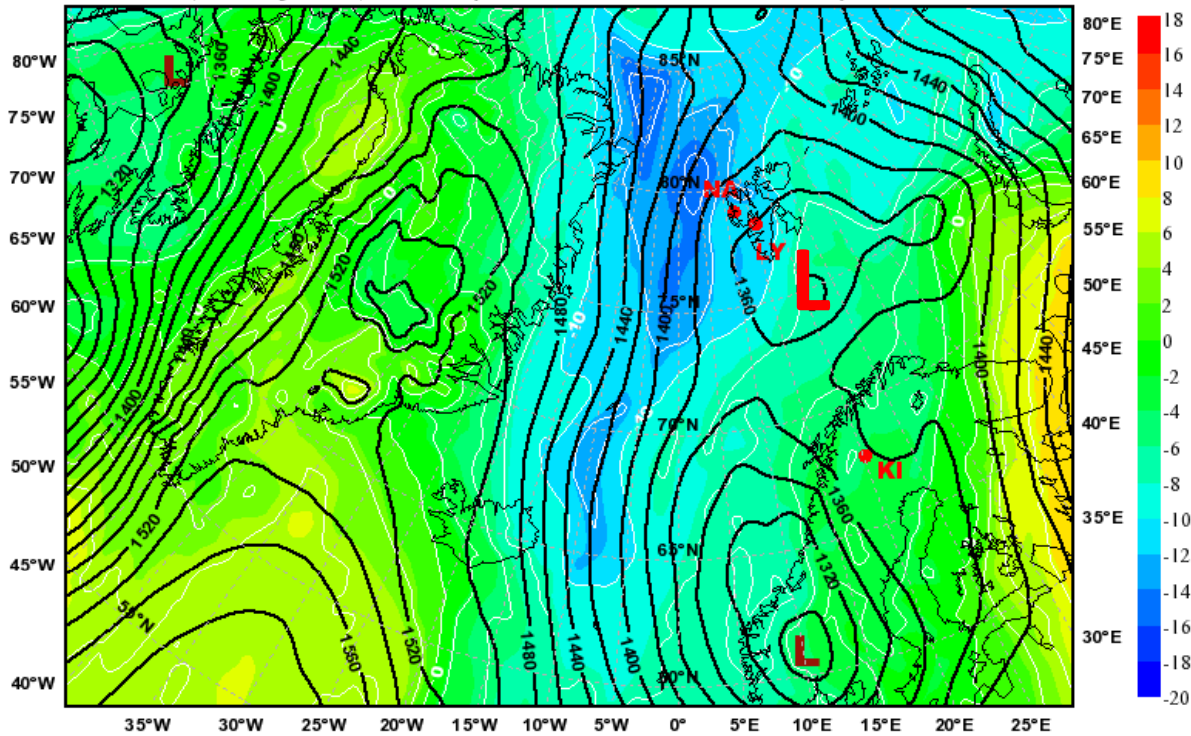


Monday
10 May 2010

Mean Sea Level Pressure
valid: Mon, 10 May 2010, 09 UTC (init: 20100509 00 UTC +033 h)

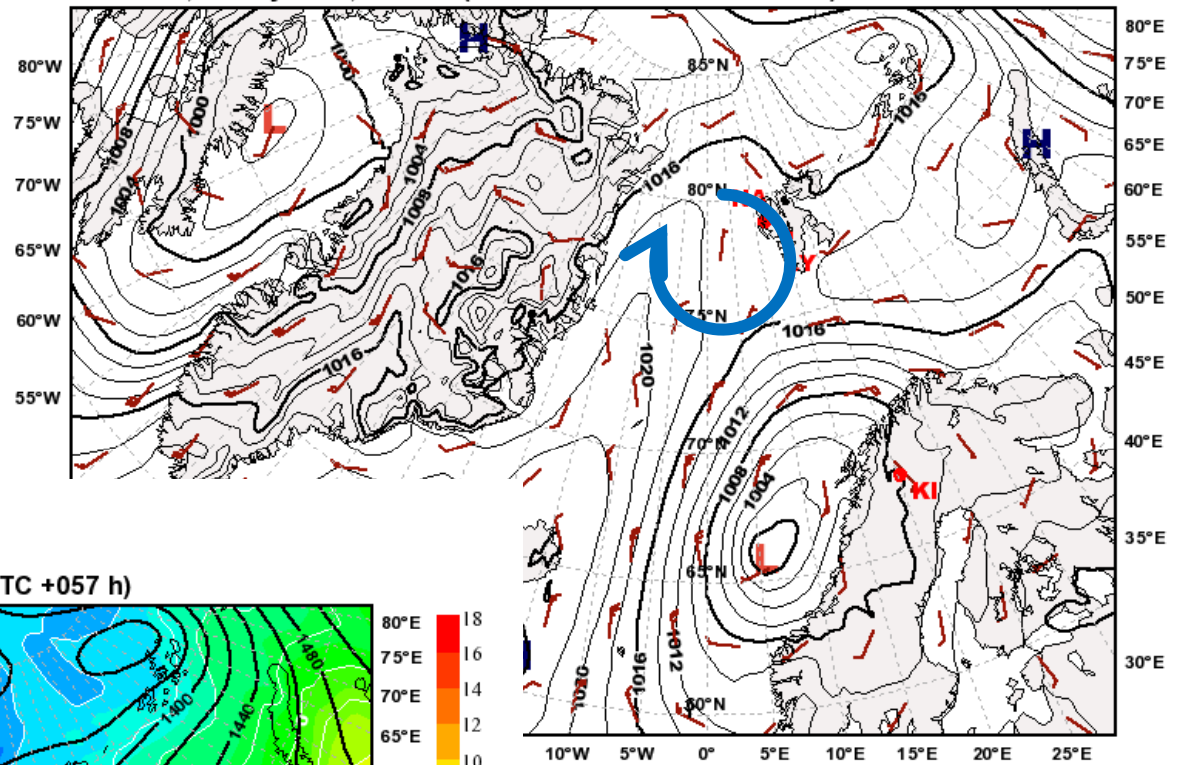


Temperature [°C] and Geopotential [m] at 850hPa
valid: Mon, 10 May 2010, 09 UTC (init: 20100509 00 UTC +033 h)

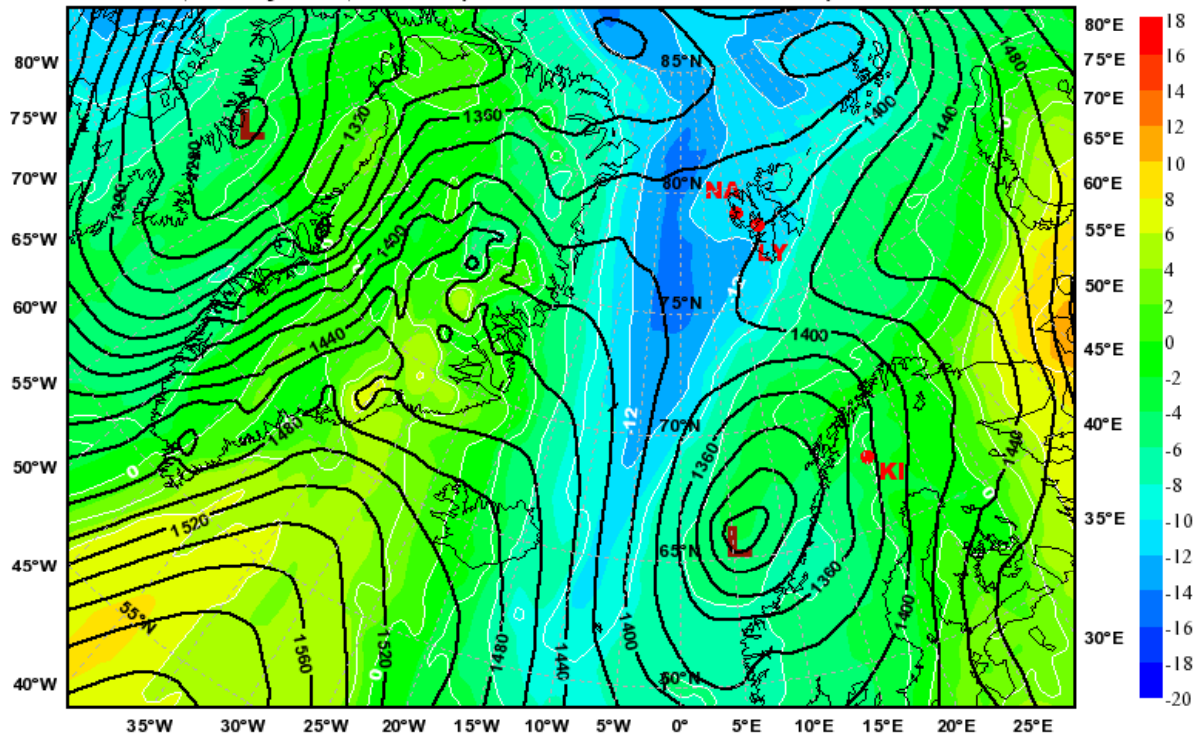


Tuesday
11 May 2010

Mean Sea Level Pressure
valid: Tue, 11 May 2010, 09 UTC (init: 20100509 00 UTC +057 h)

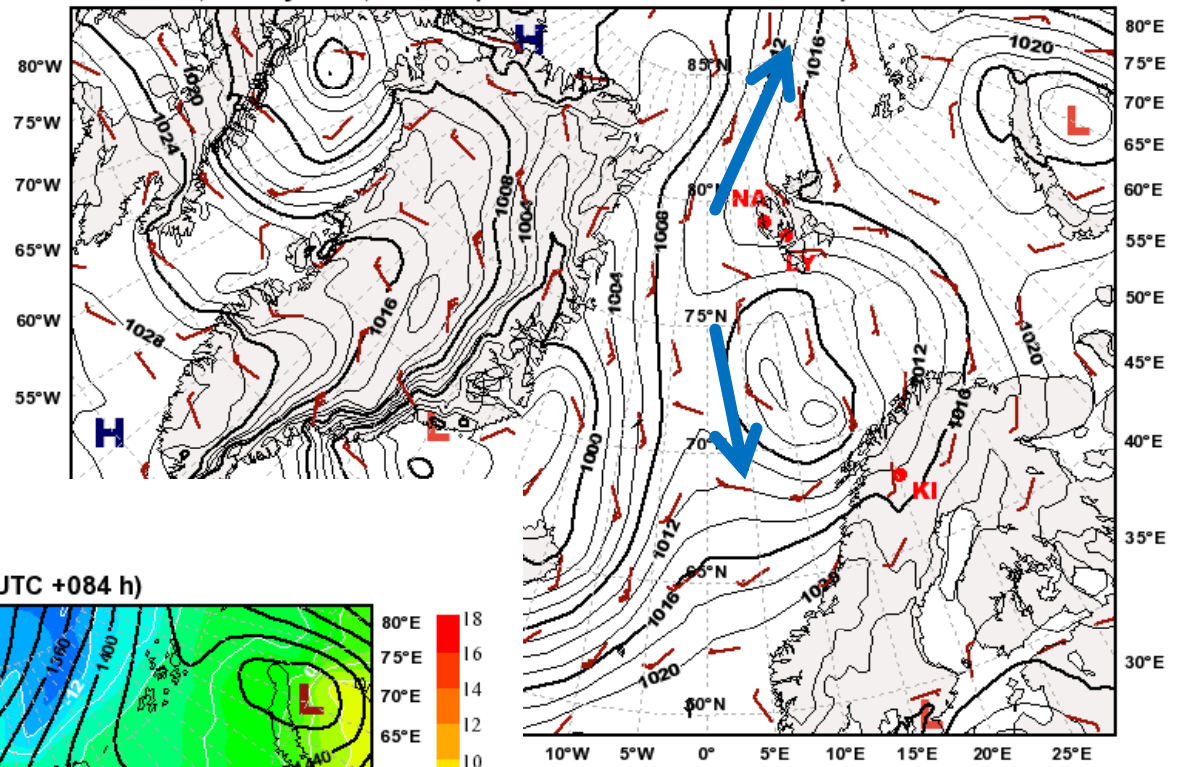


Temperature [°C] and Geopotential [m] at 850hPa
valid: Tue, 11 May 2010, 09 UTC (init: 20100509 00 UTC +057 h)

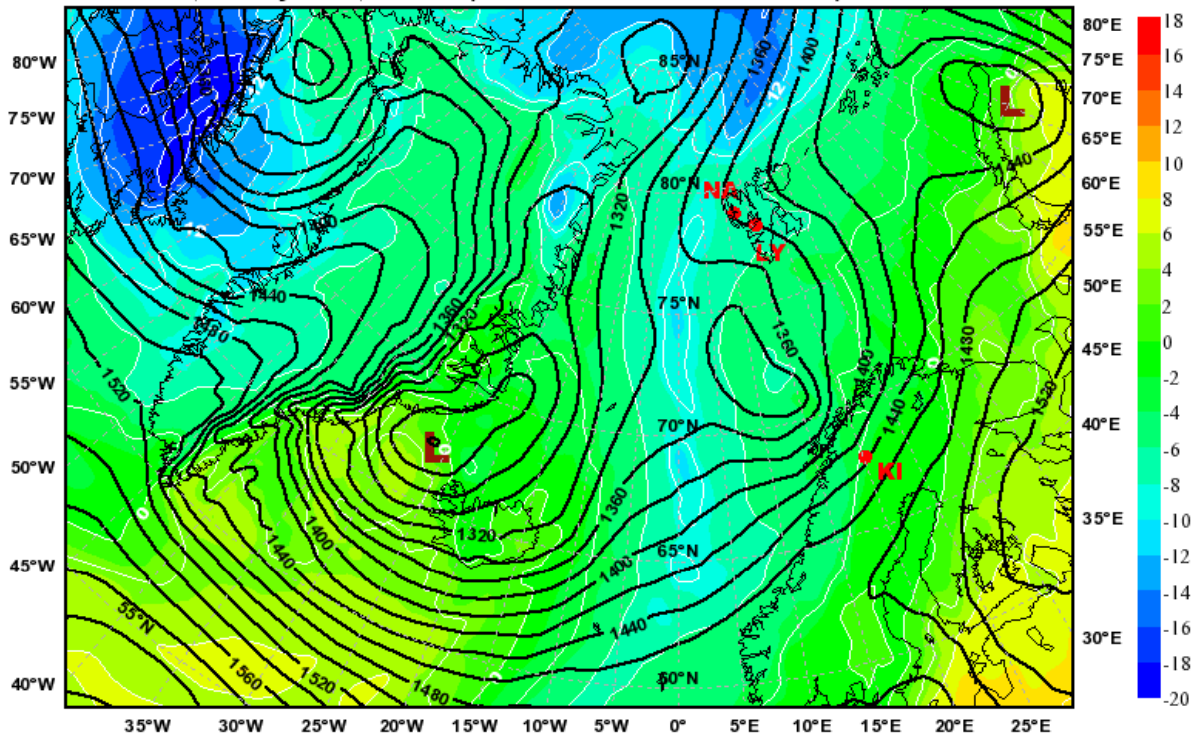


Wednesday
12 May 2010

Mean Sea Level Pressure
valid: Wed, 12 May 2010, 12 UTC (init: 20100509 00 UTC +084 h)

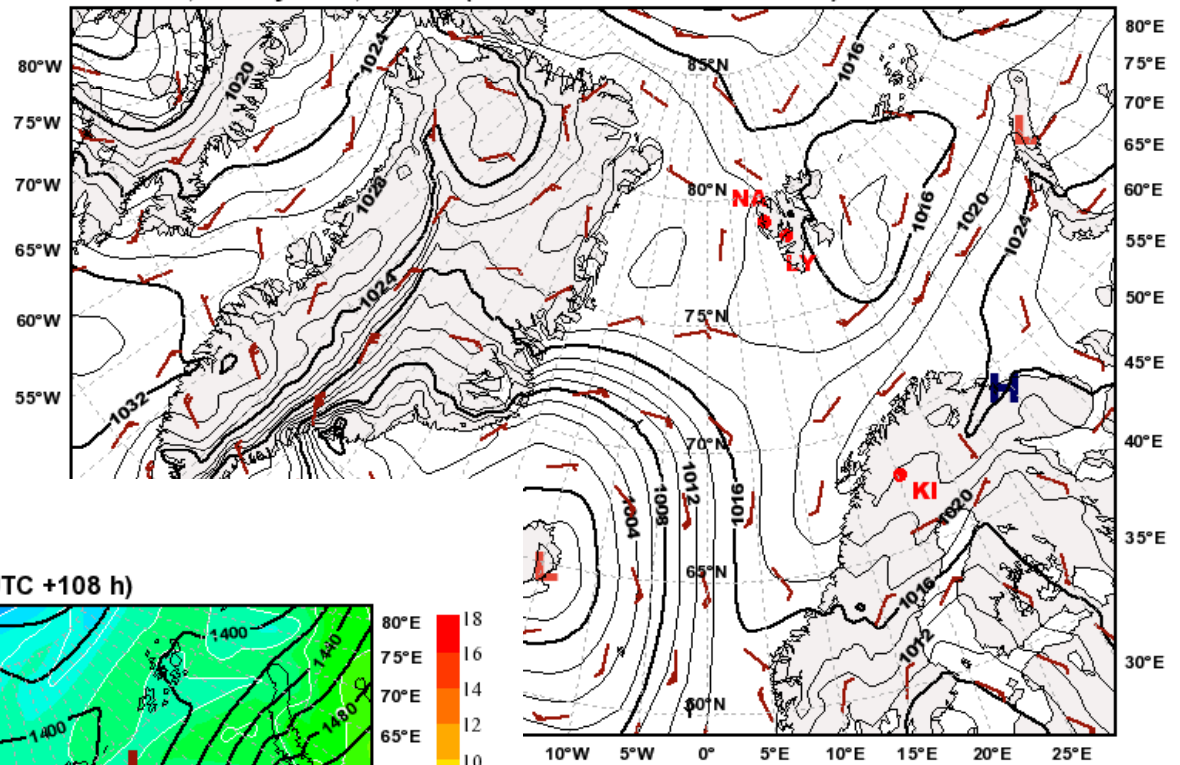


Temperature [°C] and Geopotential [m] at 850hPa
valid: Wed, 12 May 2010, 12 UTC (init: 20100509 00 UTC +084 h)

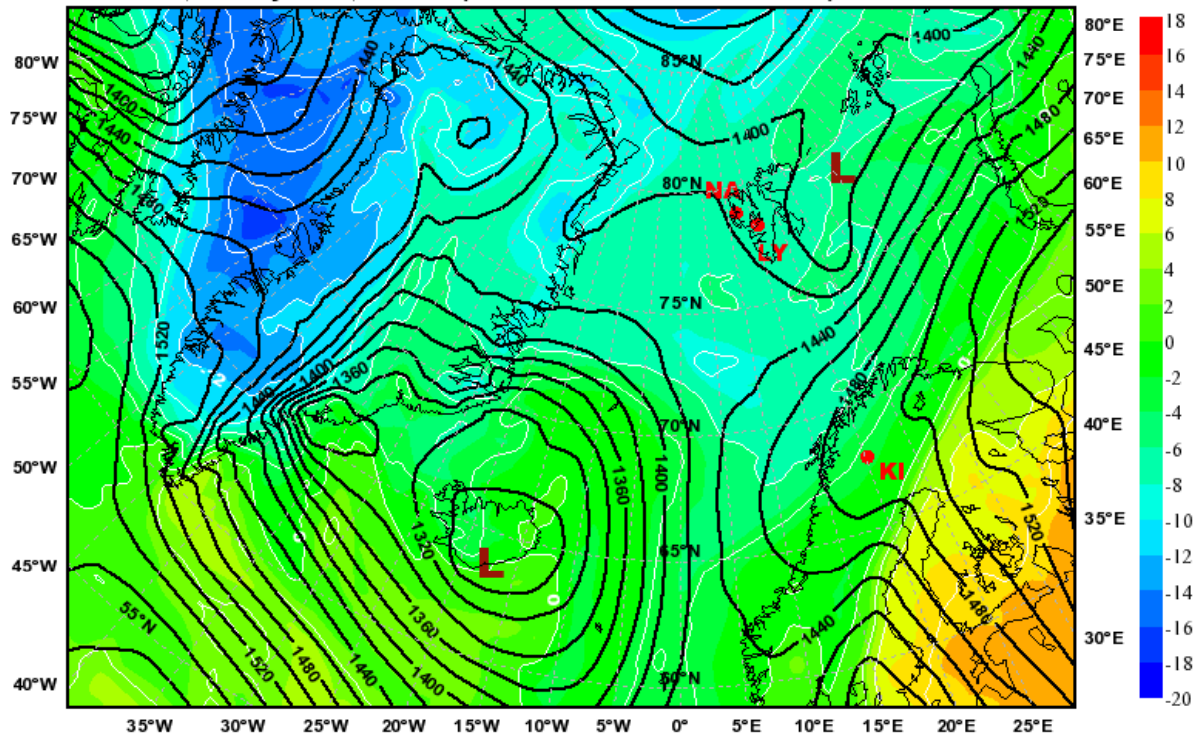


Thursday
13 May 2010

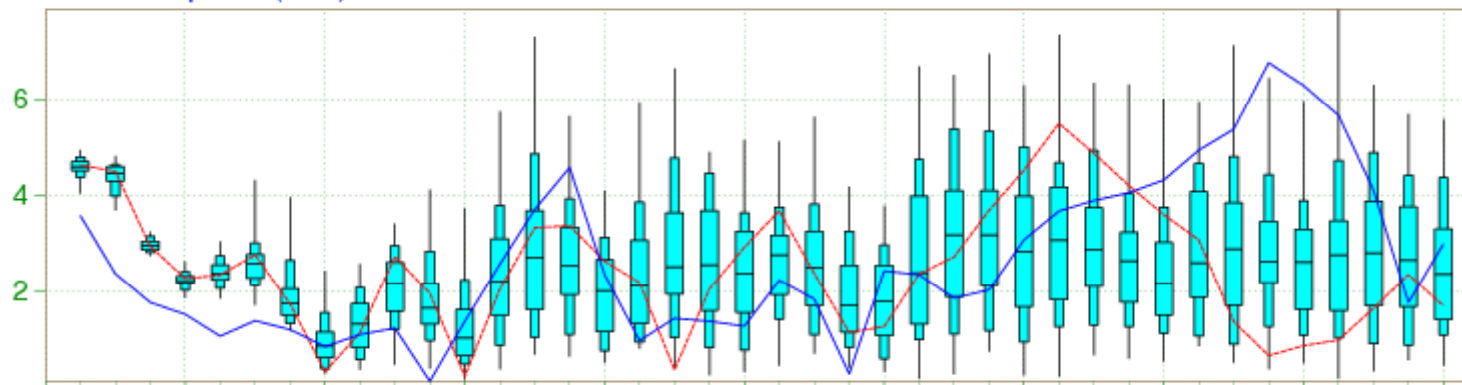
Mean Sea Level Pressure
valid: Thu, 13 May 2010, 12 UTC (init: 20100509 00 UTC +108 h)



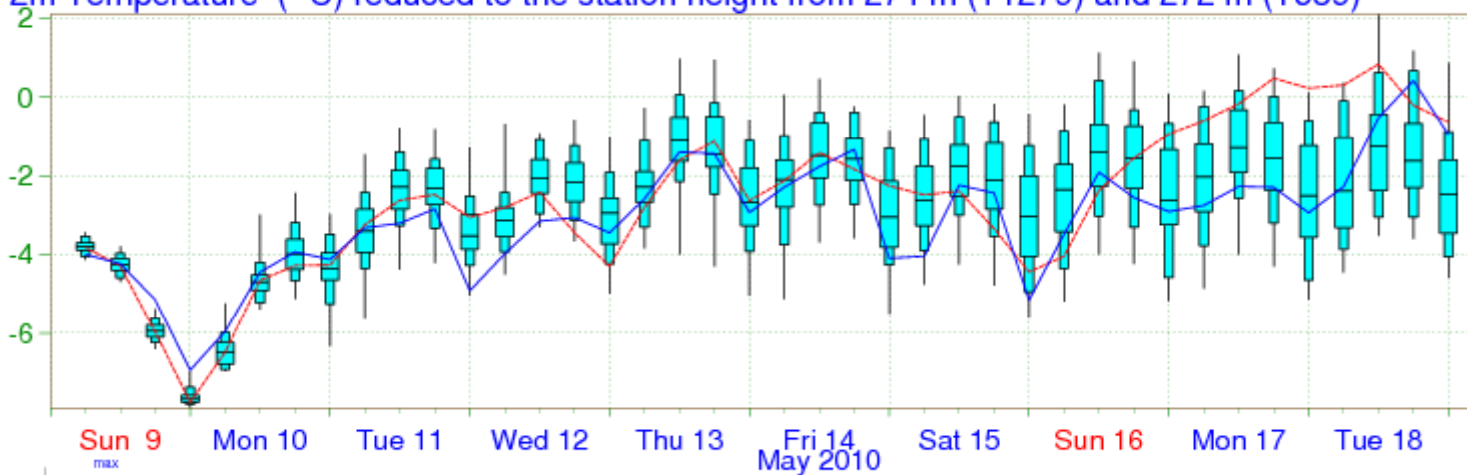
Temperature [°C] and Geopotential [m] at 850hPa
valid: Thu, 13 May 2010, 12 UTC (init: 20100509 00 UTC +108 h)



10m Wind Speed (m/s)

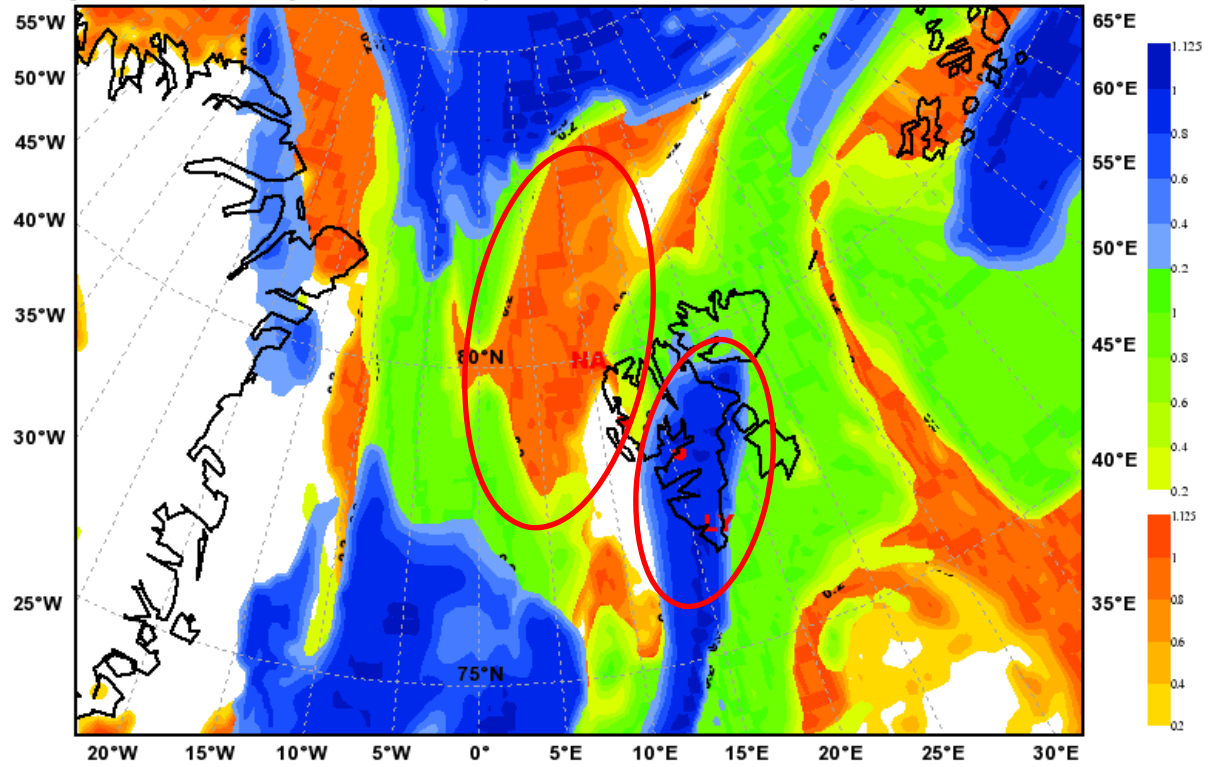


2m Temperature (°C) reduced to the station height from 274 m (T1279) and 272 m (T639)

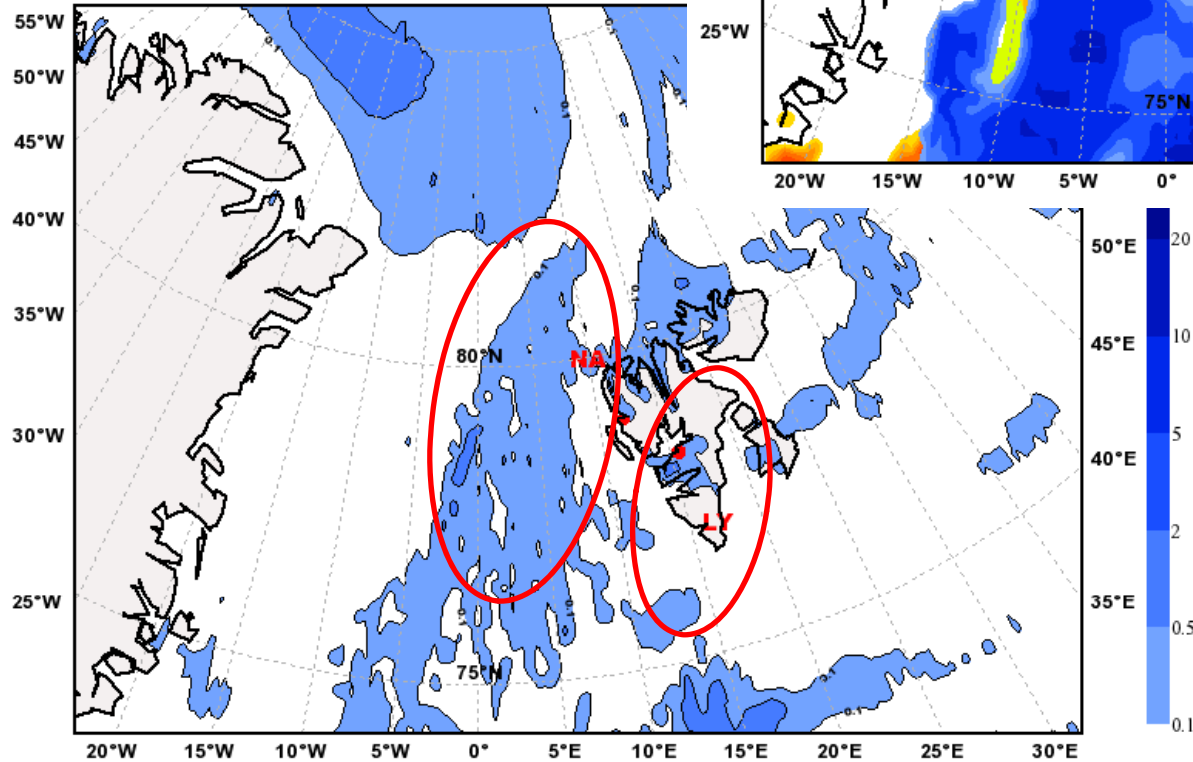


Monday
10 May 2010

Total Cloud Cover
Valid: Mon, 10 May 2010, 09 UTC (init: 20100509 00 UTC +033 h)

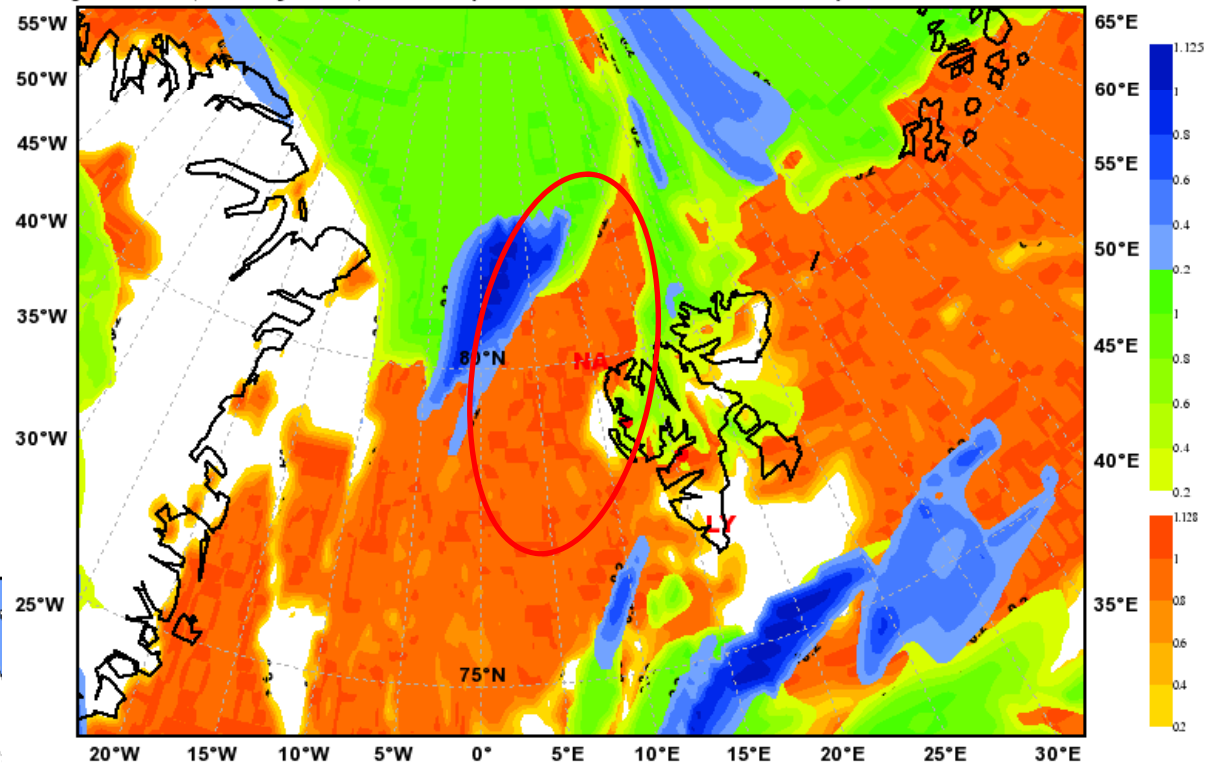


Total Precipitation [mm]
Valid: Tue, 11 May 2010, 03-09 UTC (init: 20100509)

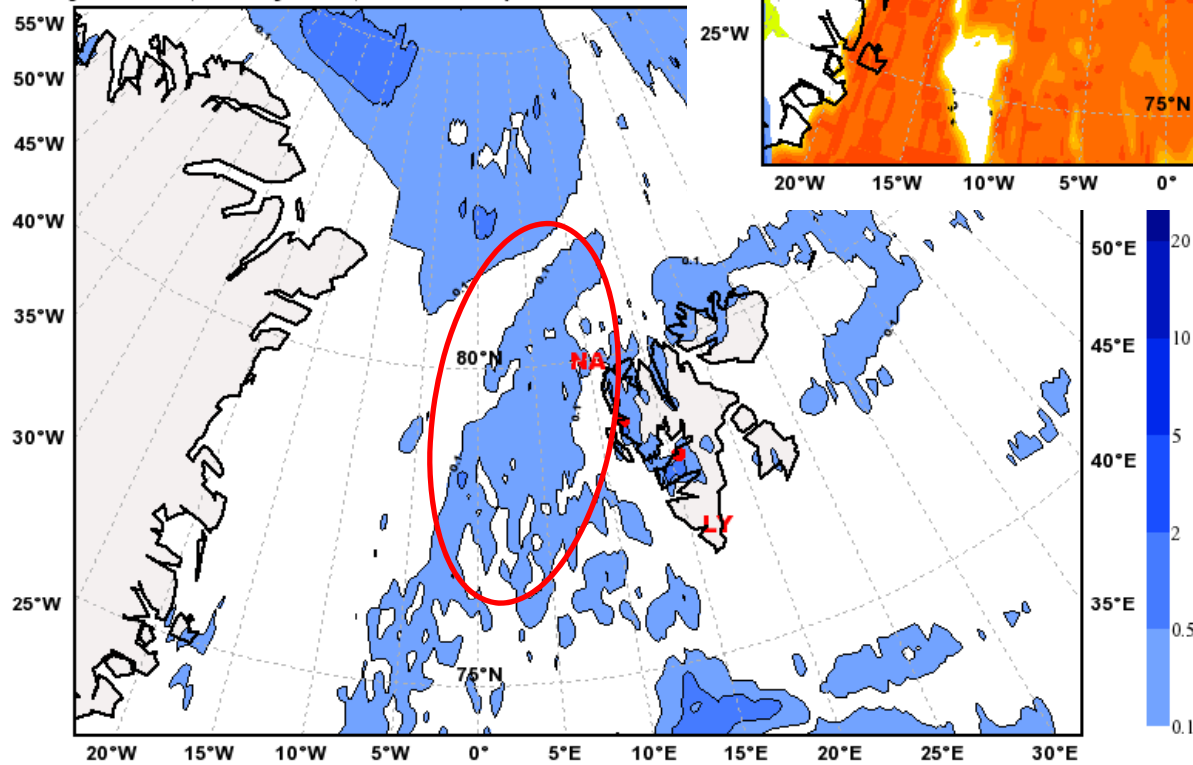


Tuesday
11 May 2010

Total Cloud Cover
Valid: Tue, 11 May 2010, 09 UTC (init: 20100509 00 UTC +057 h)



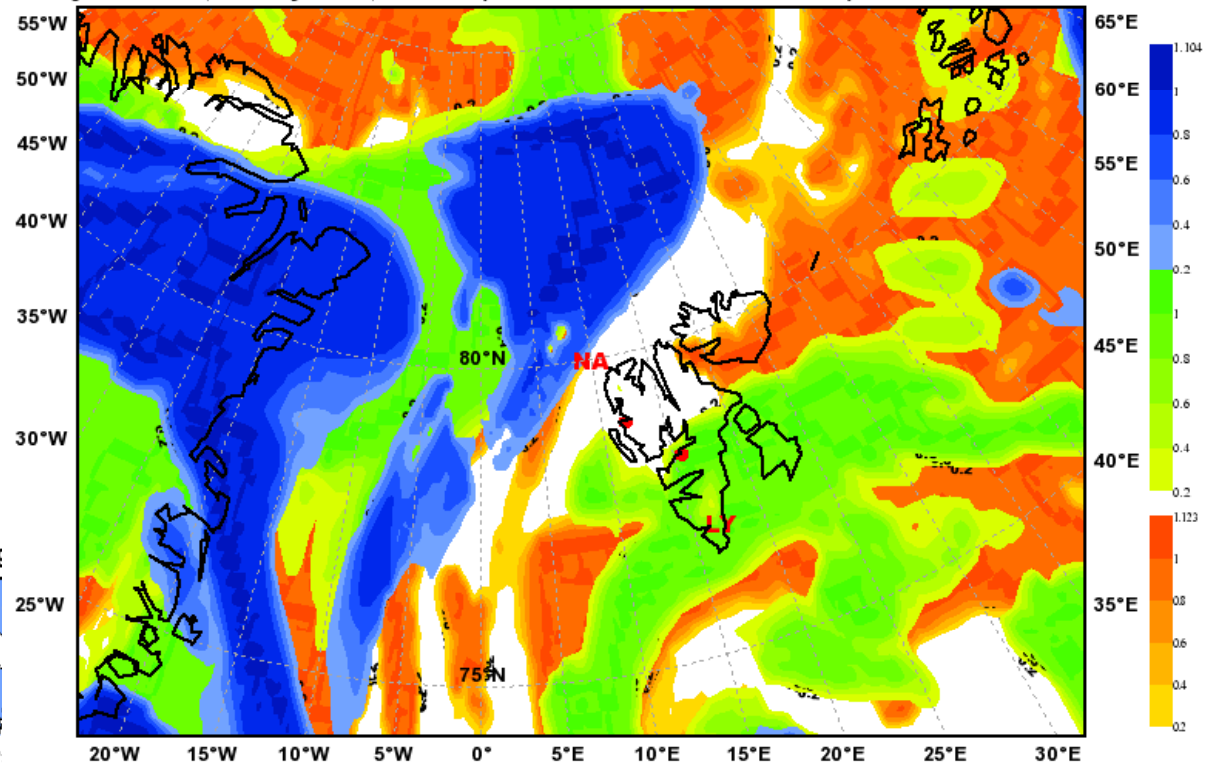
Total Precipitation [mm]
Valid: Tue, 11 May 2010, 06-12 UTC (init: 20100509)



Wednesday 12 May 2010

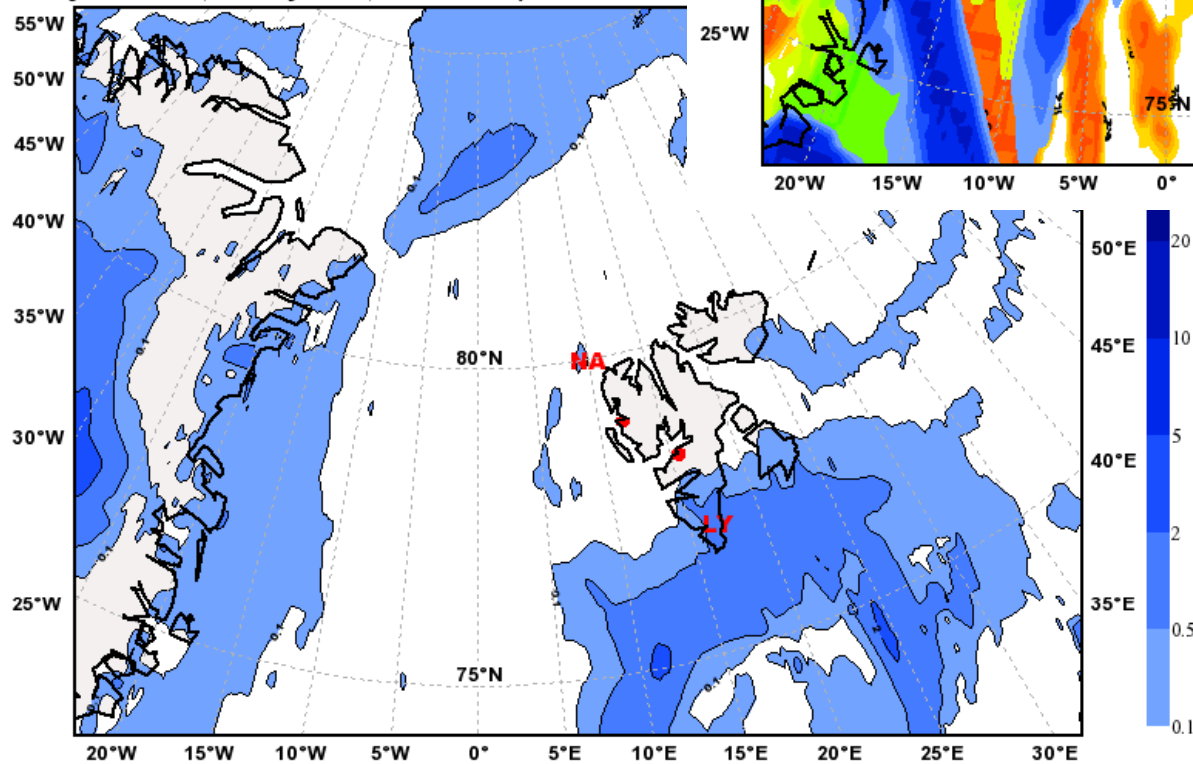
Total Cloud Cover

Valid: Wed, 12 May 2010, 12 UTC (init: 20100509 00 UTC +084 h)



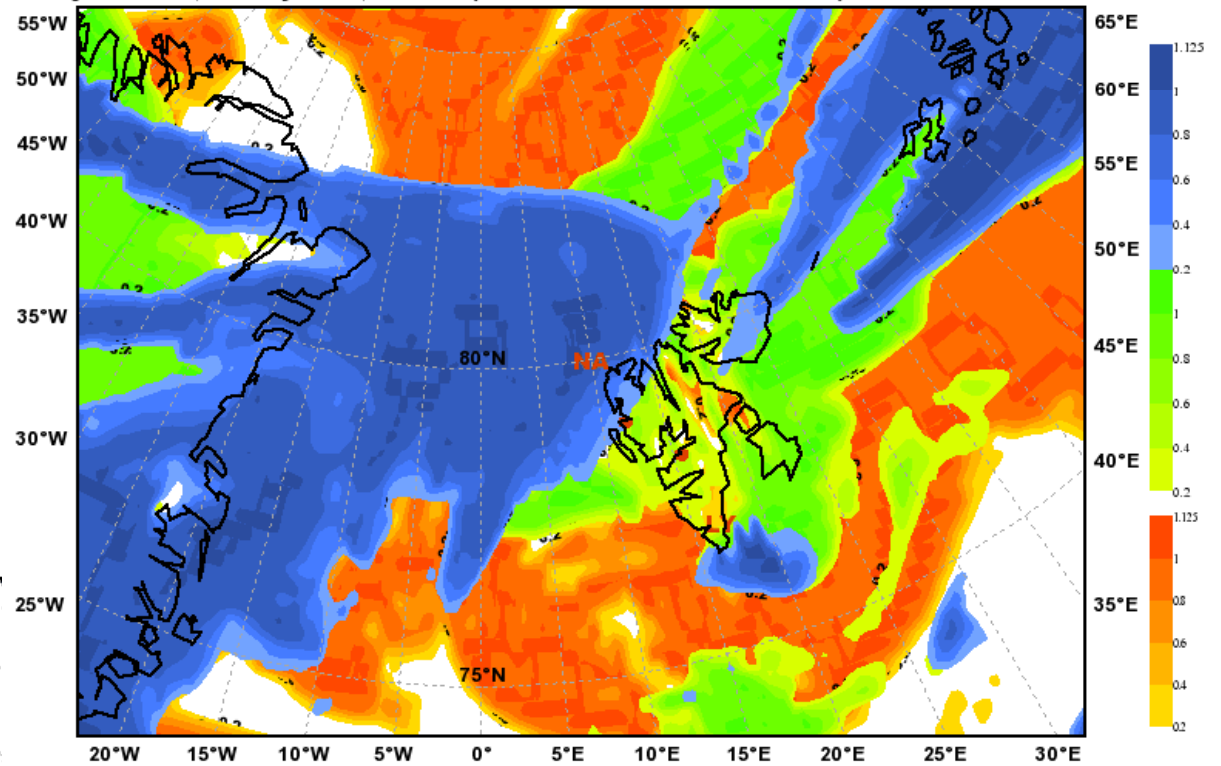
Total Precipitation [mm]

Valid: Wed, 12 May 2010, 06-12 UTC (init: 20100509 00 UTC +084 h)

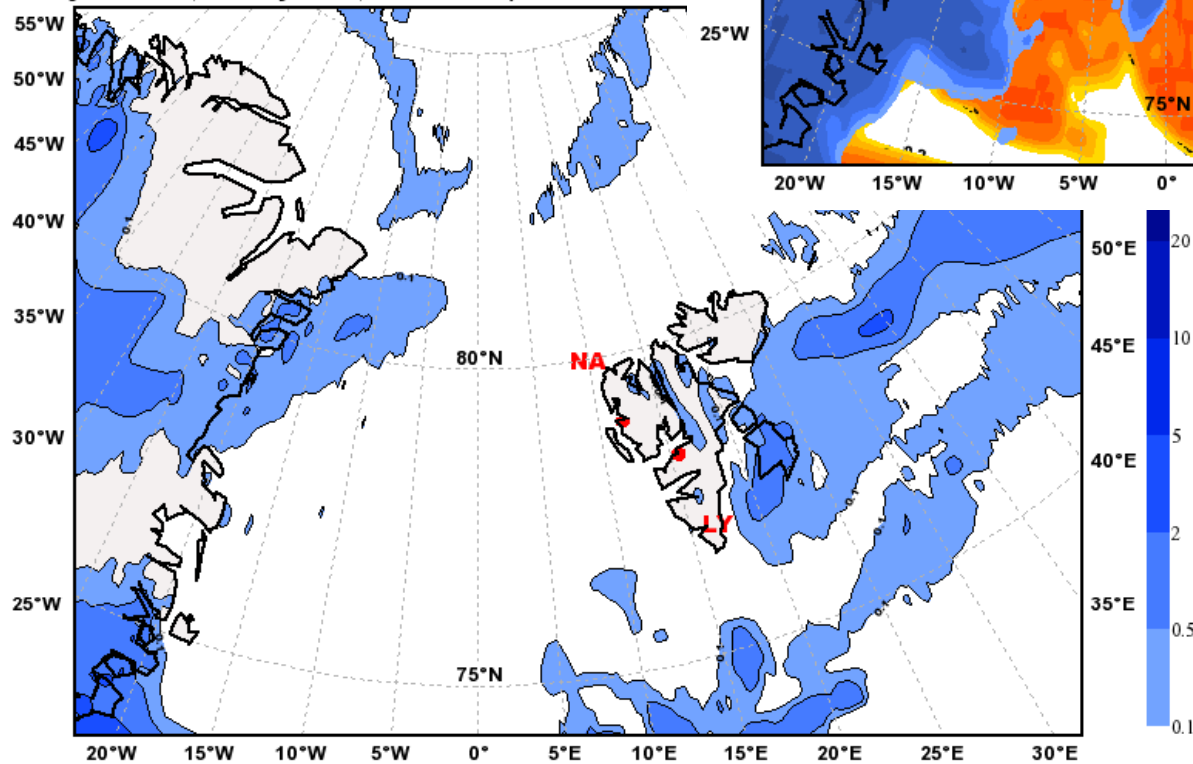


Monday
10 May 2010

Total Cloud Cover
Valid: Thu, 13 May 2010, 12 UTC (init: 20100509 00 UTC +108 h)

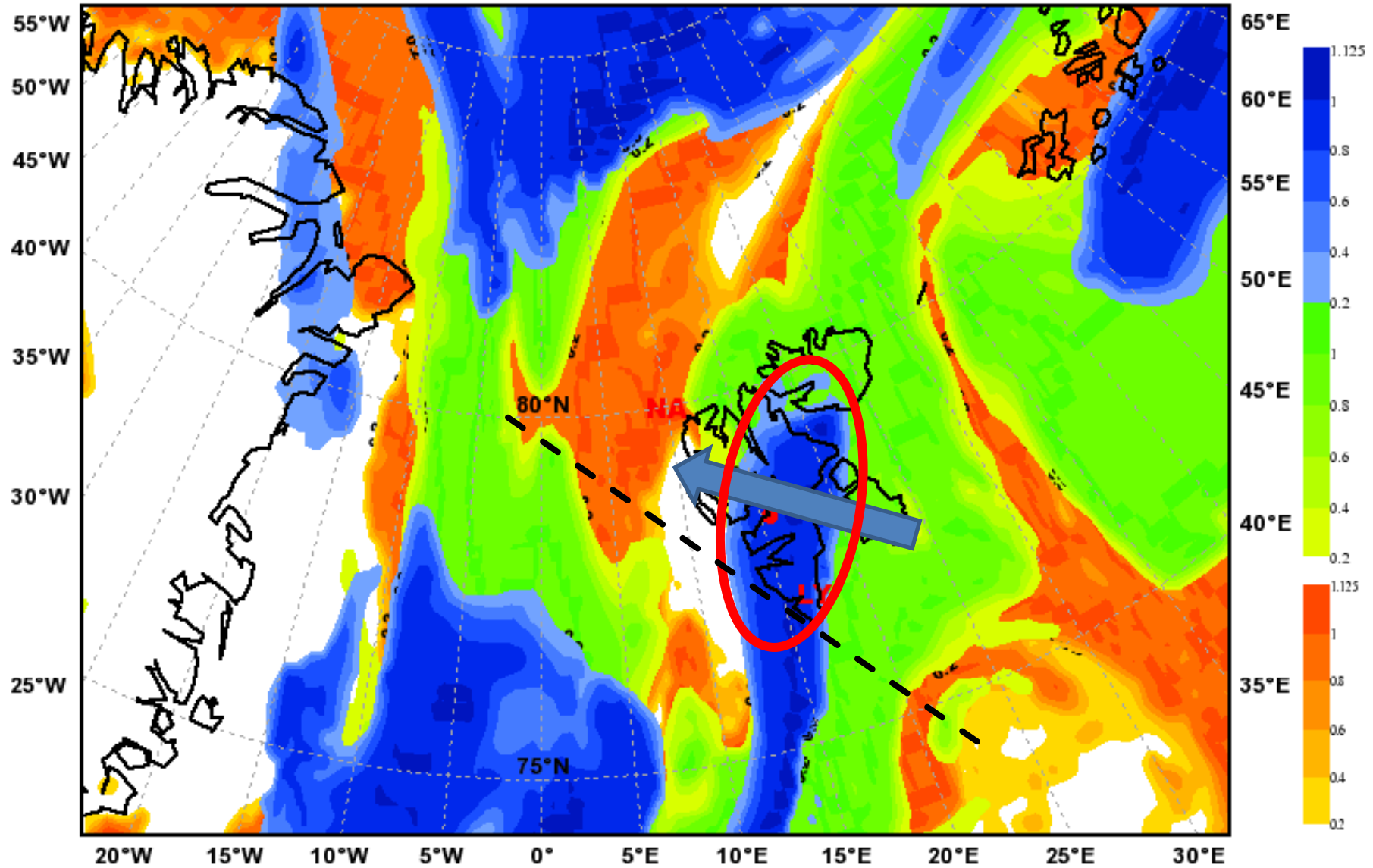


Total Precipitation [mm]
Valid: Thu, 13 May 2010, 06-12 UTC (init: 20100509)

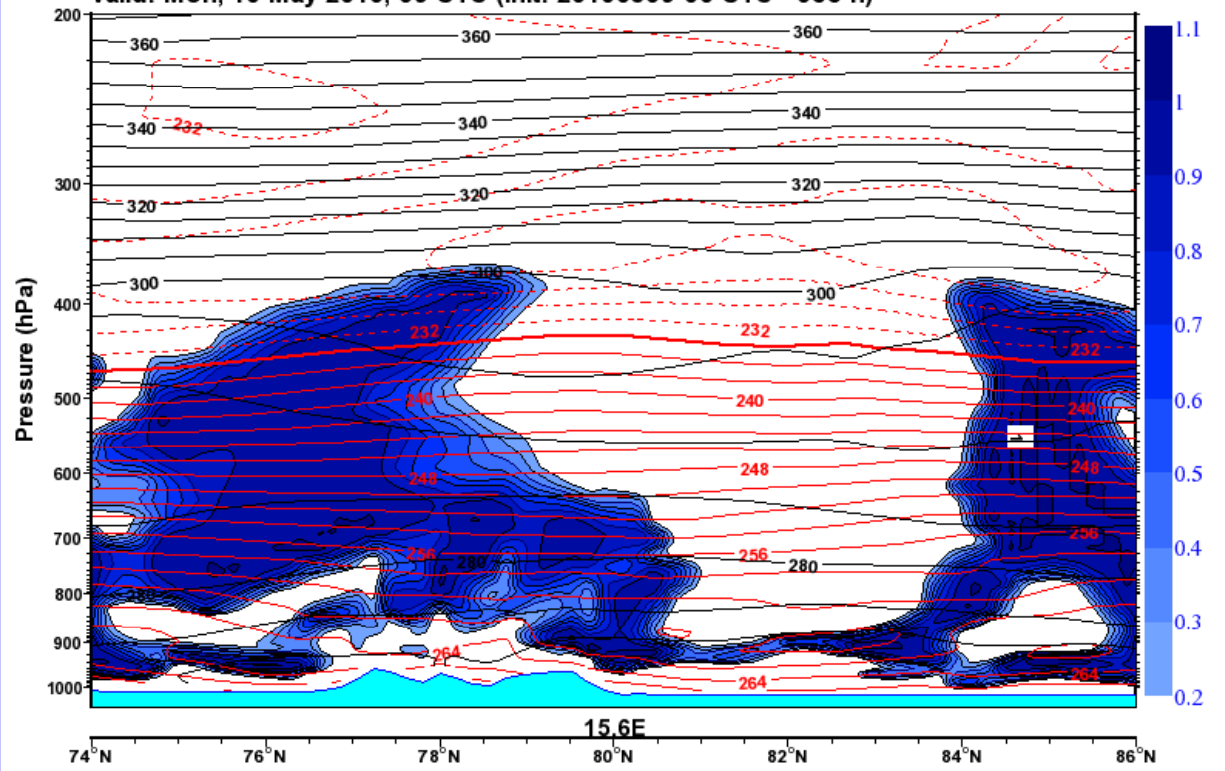


Total Cloud Cover

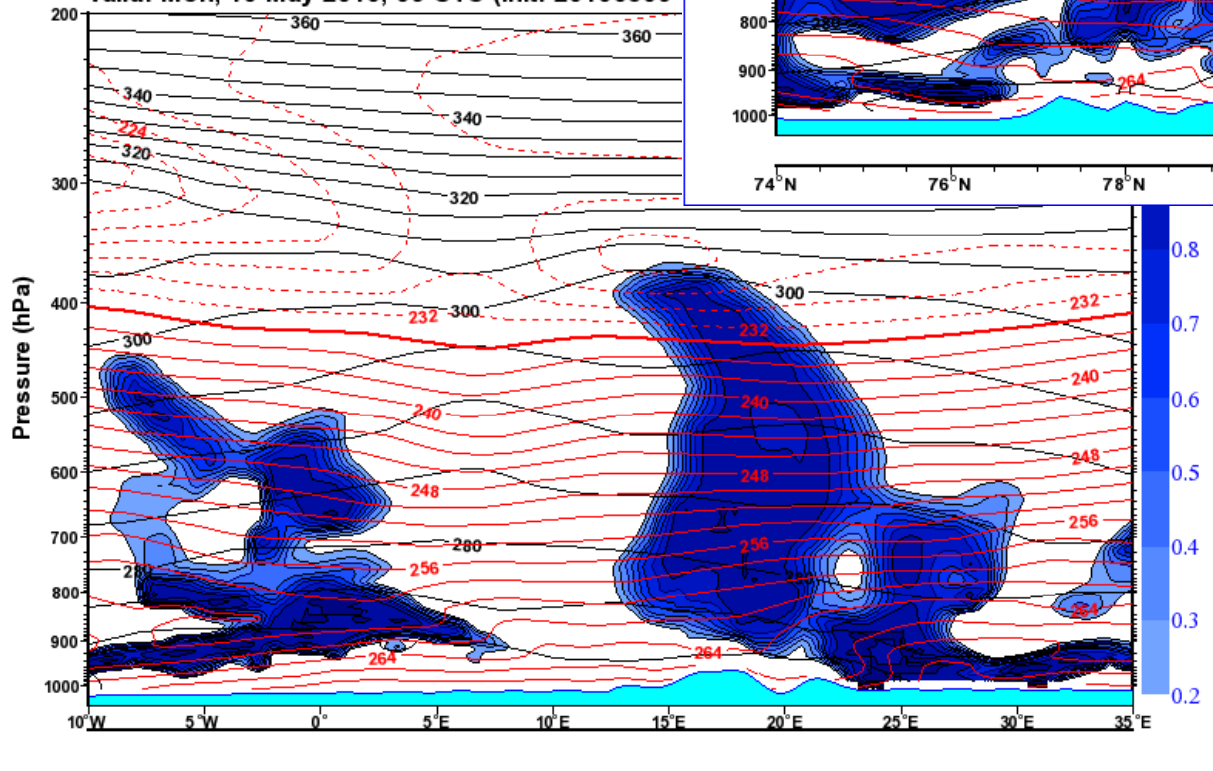
valid: Mon, 10 May 2010, 09 UTC (init: 20100509 00 UTC +033 h)

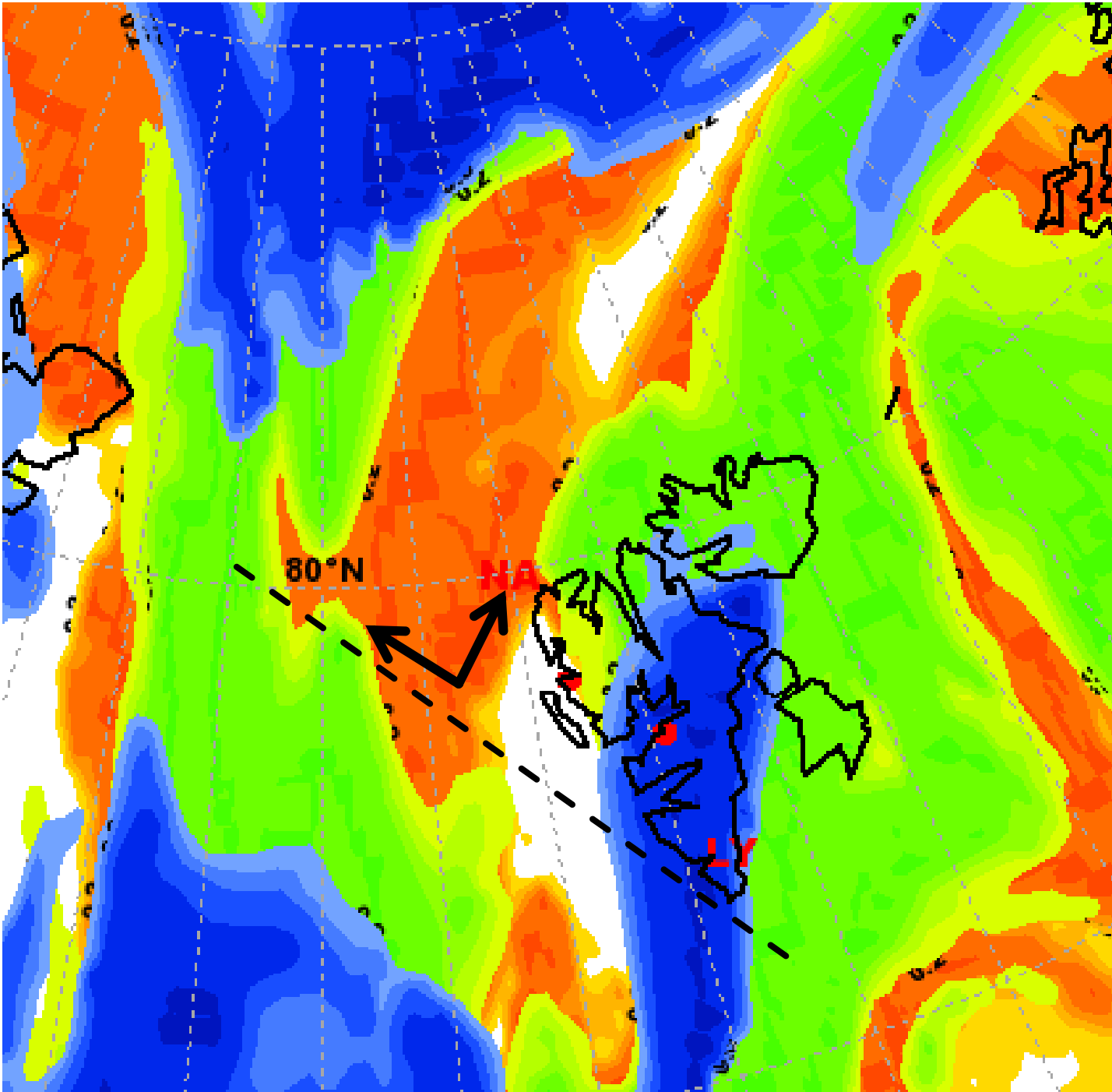


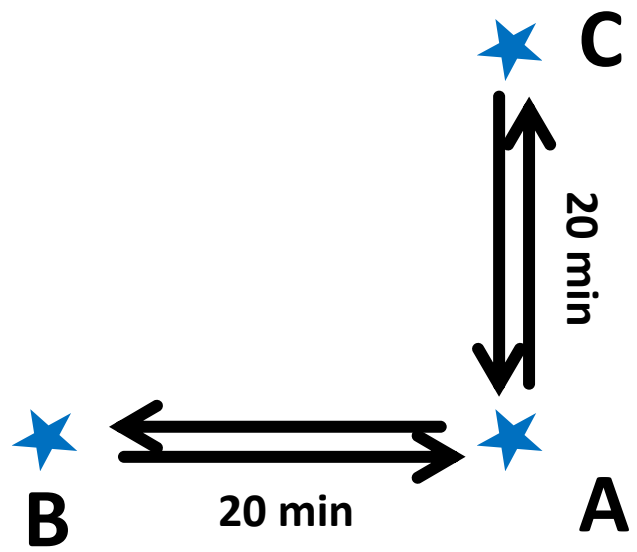
Vertical Section: Cloud Cover (with T [K] and TH [K])
valid: Mon, 10 May 2010, 09 UTC (init: 20100509 00 UTC +033 h)



Vertical Section: Cloud Cover (with T [K] and TH [K])
valid: Mon, 10 May 2010, 09 UTC (init: 20100509)







2 Drop sondes each leg