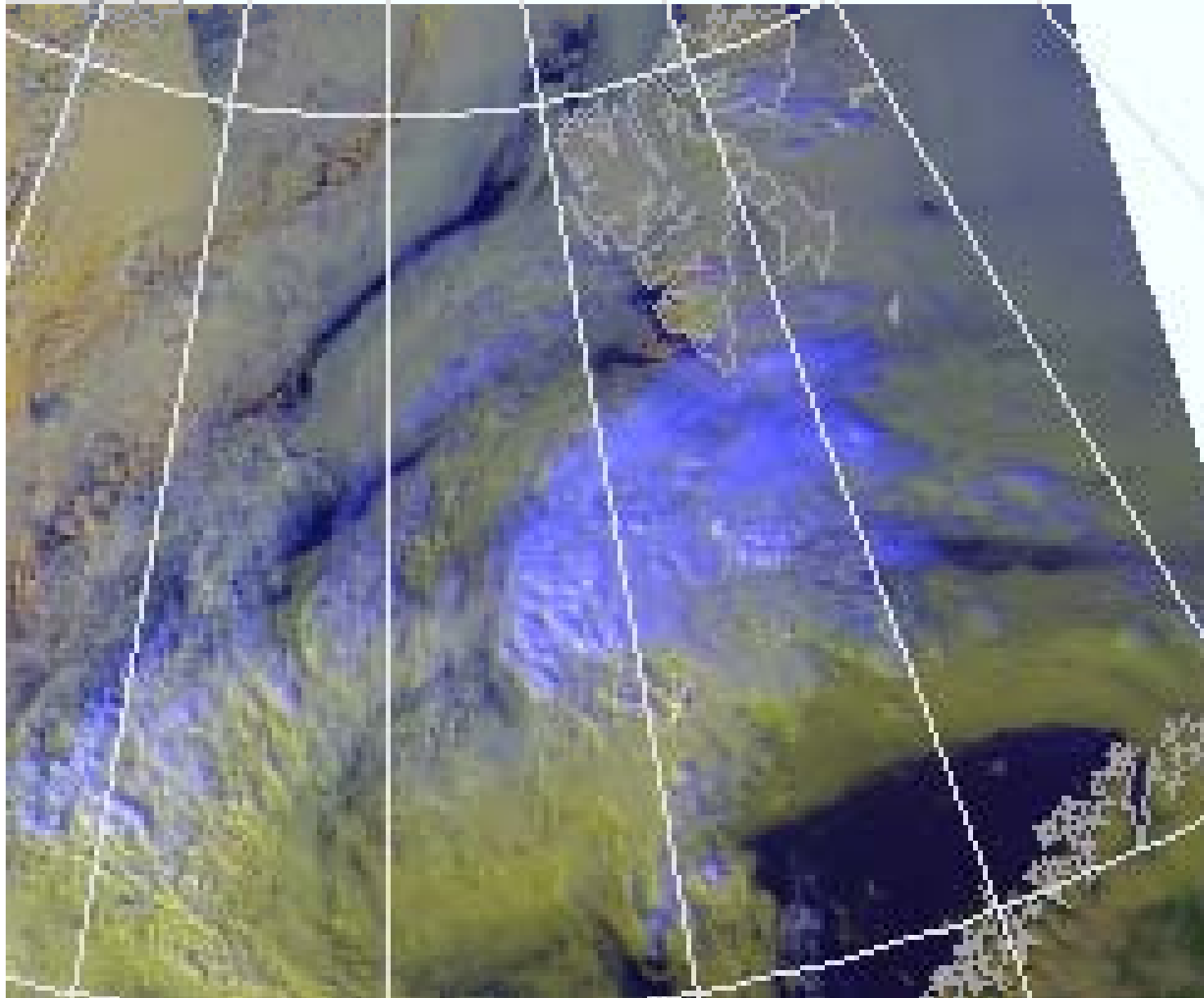
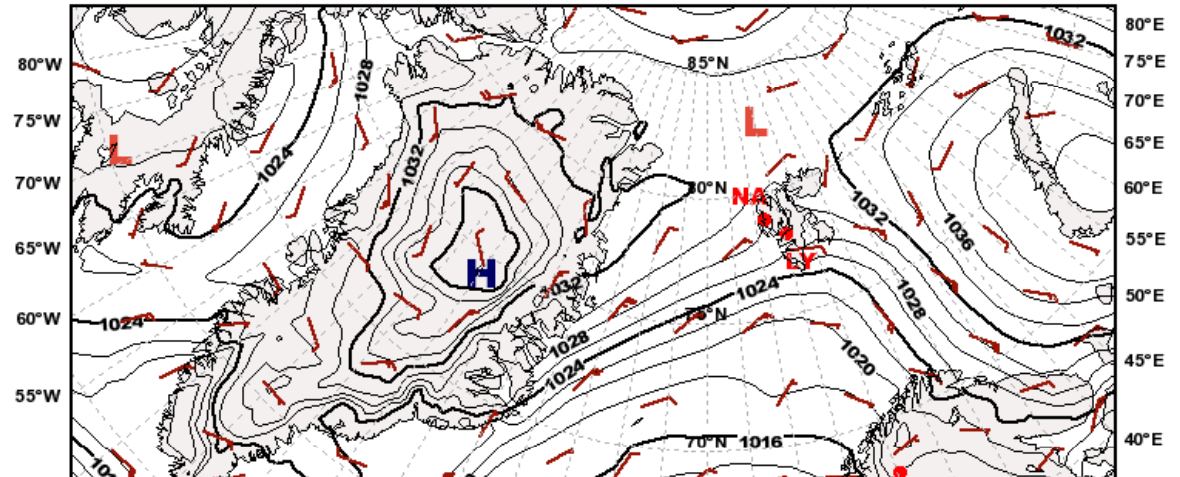


## Debriefing and weather forecast 15 May 2010



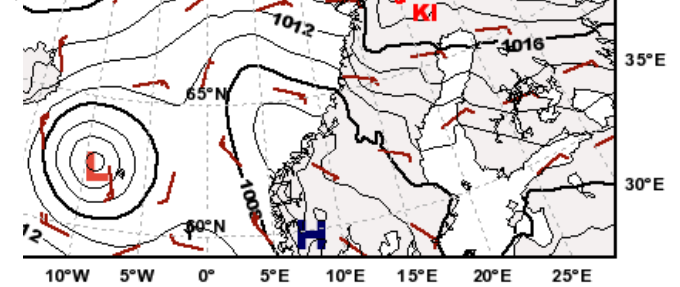
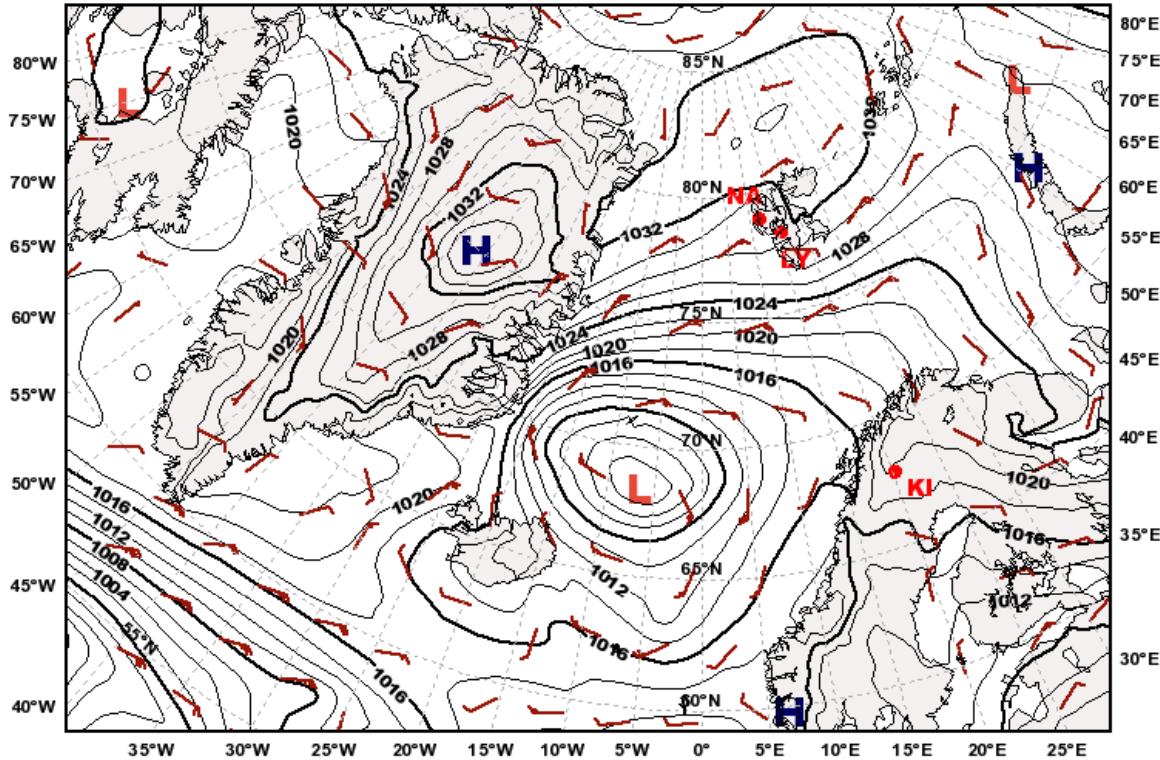
Sun 16 May  
12 UTC

Mean Sea Level Pressure  
valid: Sun, 16 May 2010, 12 UTC (init: 20100515 00 UTC +036 h)



Mon 17 May  
12 UTC

Mean Sea Level Pressure  
valid: Mon, 17 May 2010, 12 UTC (init: 20100515 00 UTC +060 h)

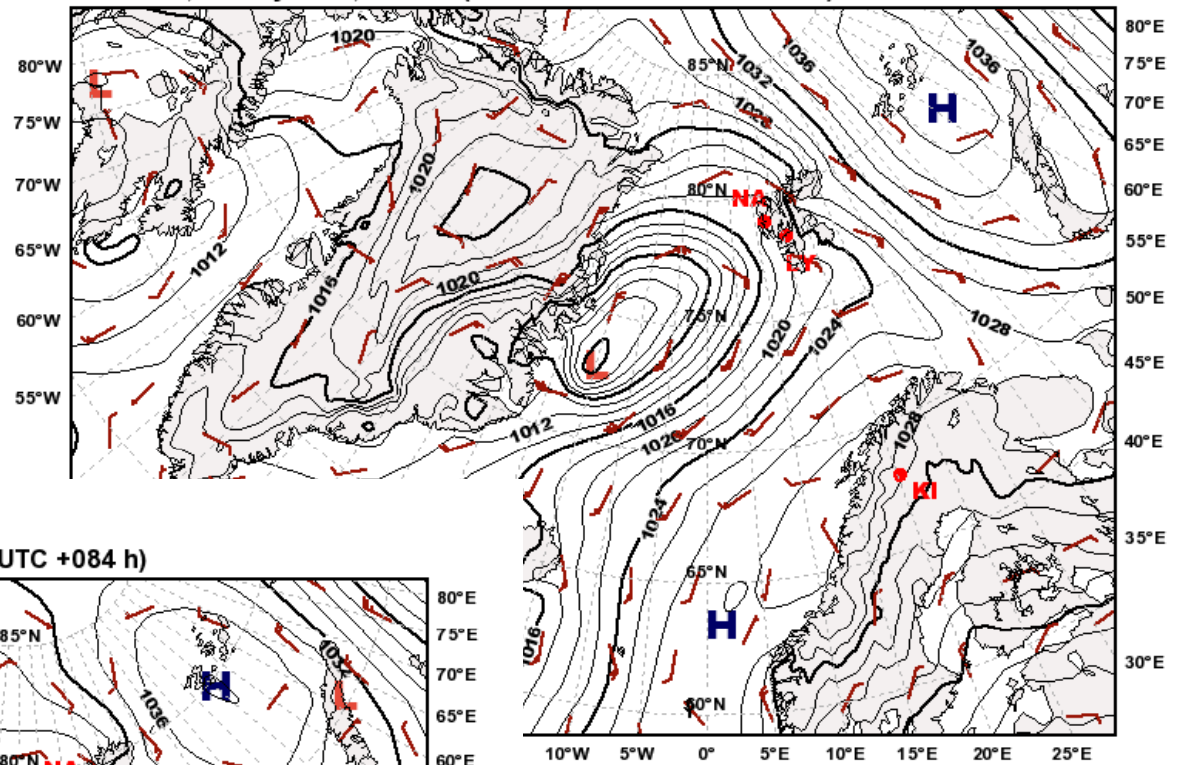


Tue 18 May  
12 UTC

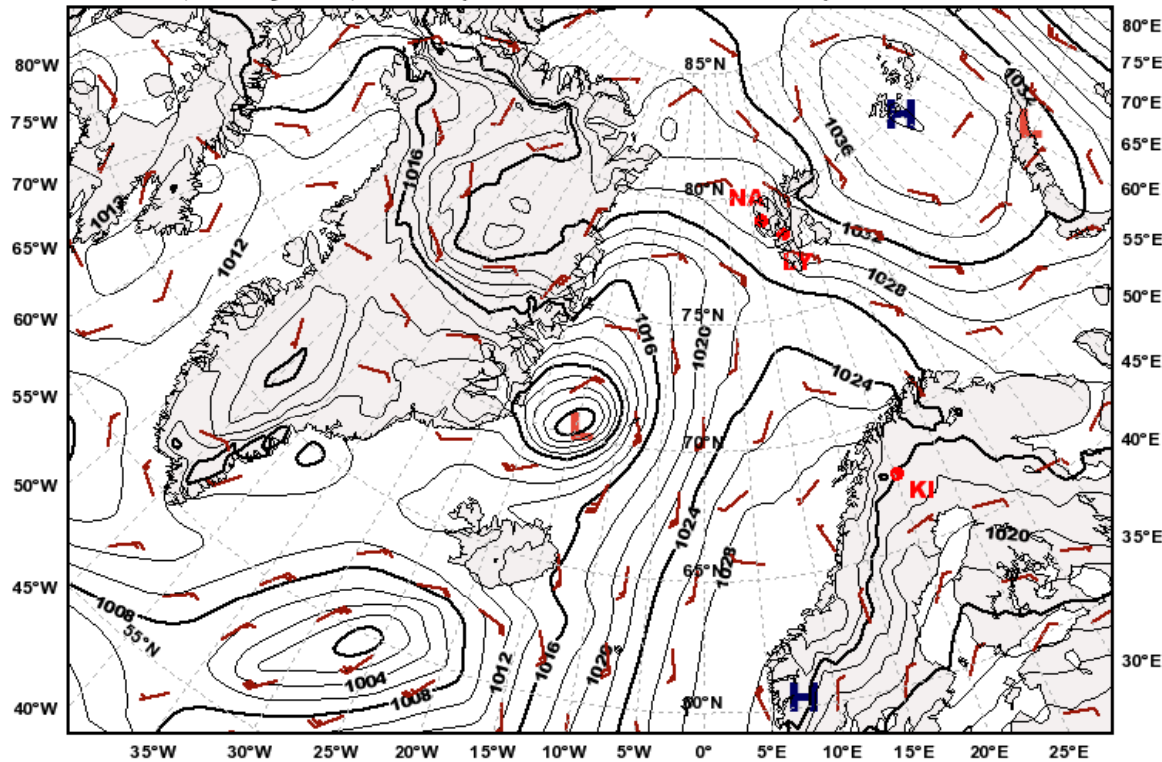
old

new

Mean Sea Level Pressure  
valid: Tue, 18 May 2010, 12 UTC (init: 20100514 00 UTC +108 h)

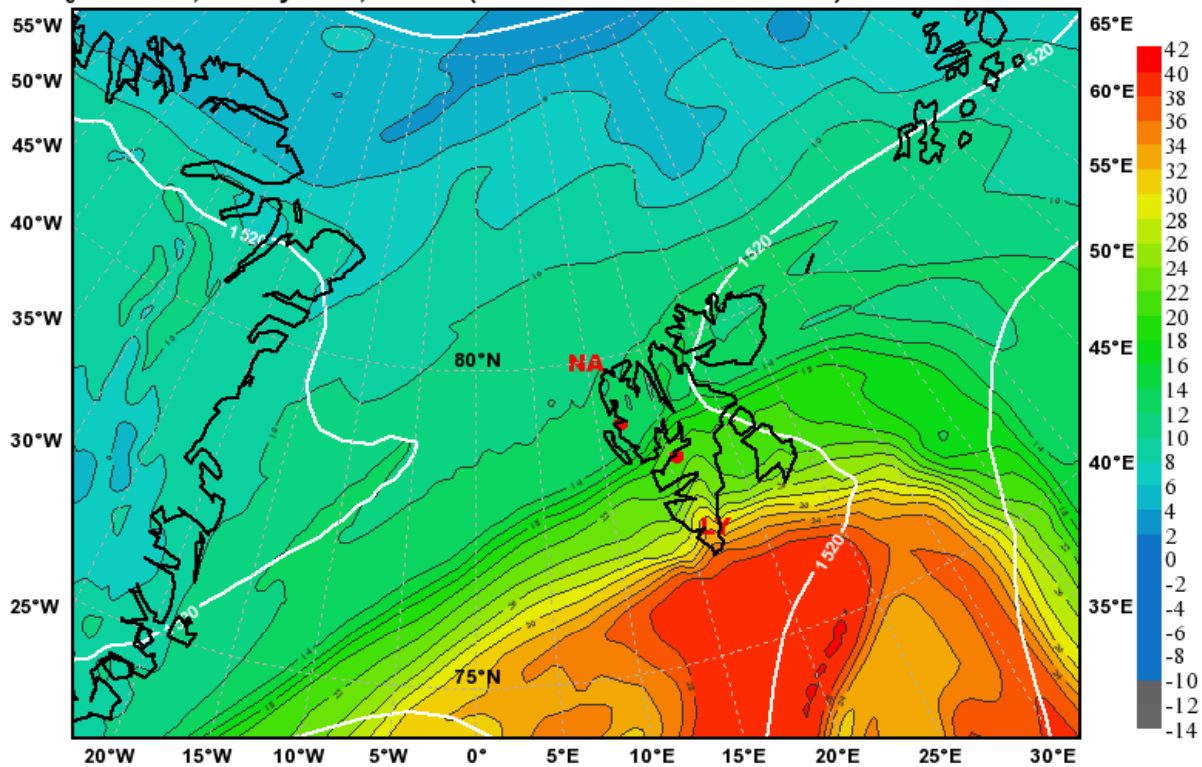


Mean Sea Level Pressure  
valid: Tue, 18 May 2010, 12 UTC (init: 20100515 00 UTC +084 h)



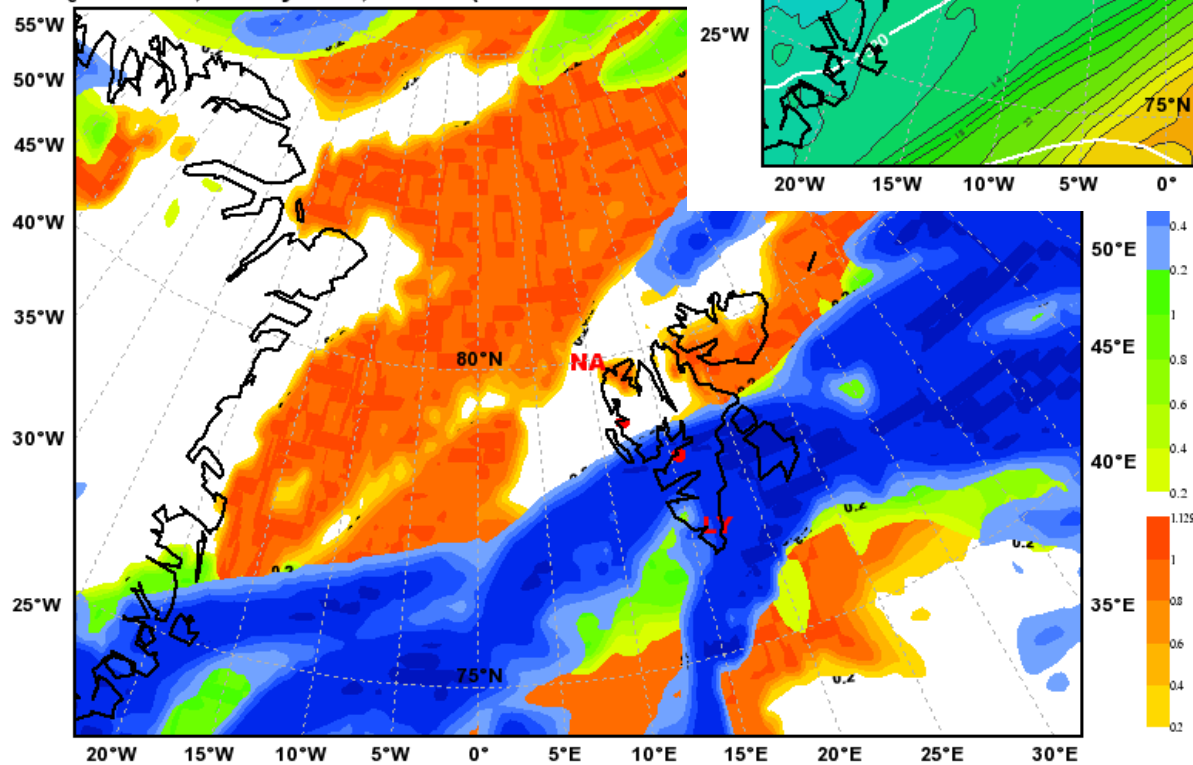
Sun 16 May  
12 UTC

Equivalent Potential Temperature [°C] & Geopot. Height [m] at 850hPa  
Valid: Sun, 16 May 2010, 12 UTC (init: 20100515 00 UTC +036 h)



Total Cloud Cover

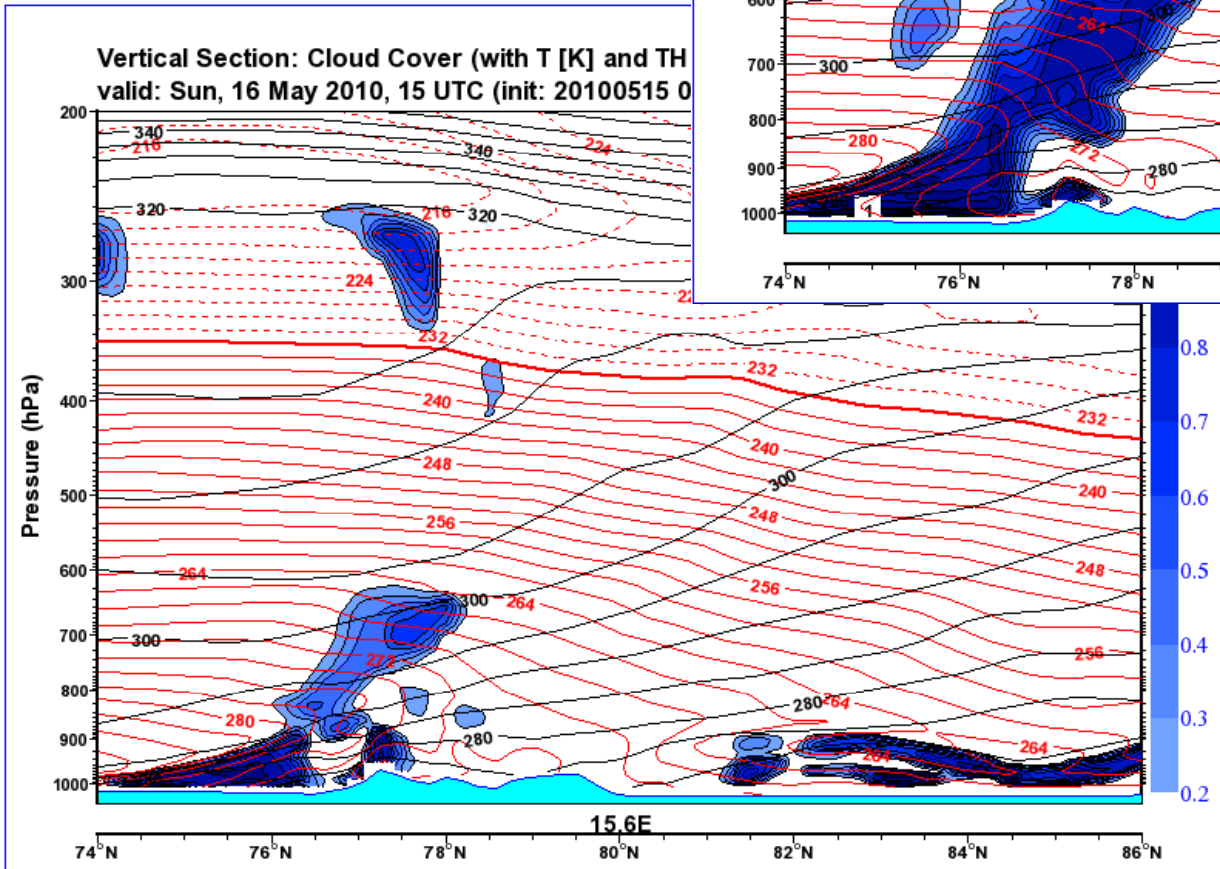
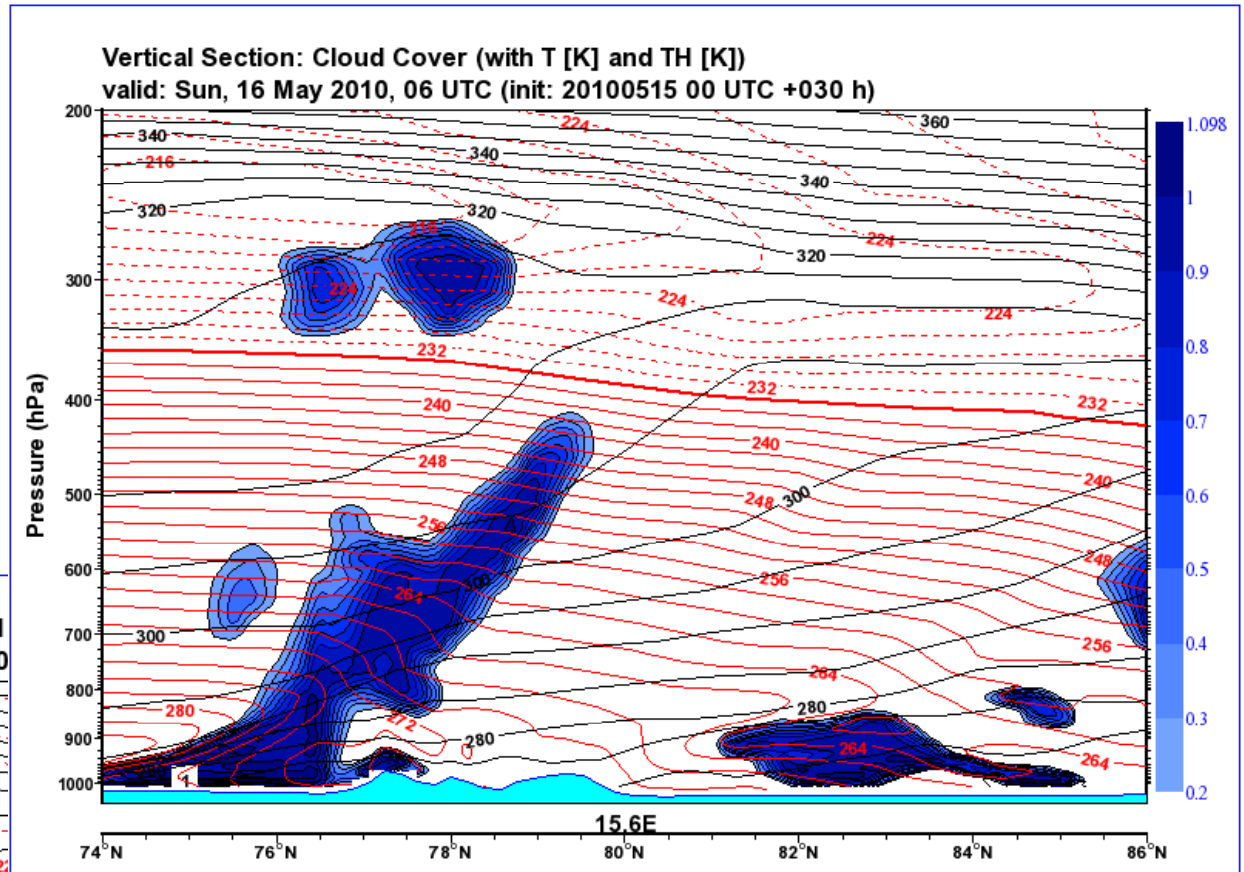
Valid: Sun, 16 May 2010, 12 UTC (init: 20100515 00





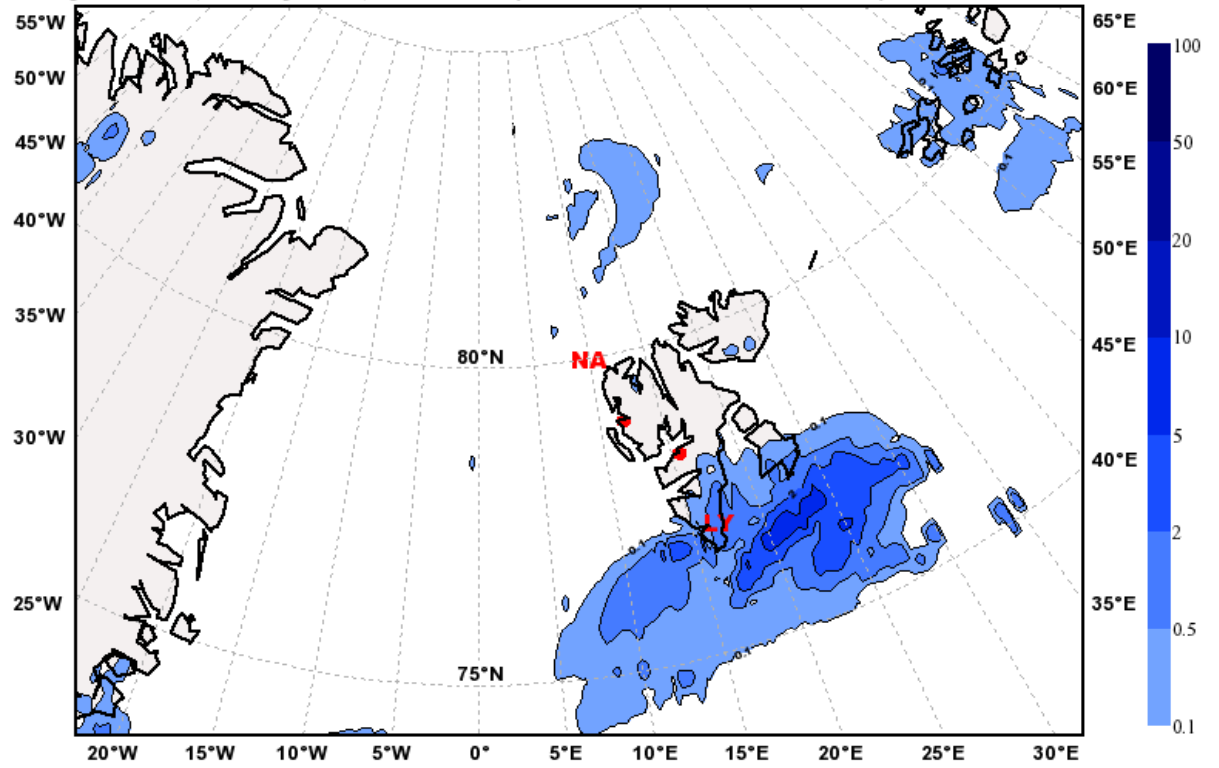
6 UTC

15 UTC



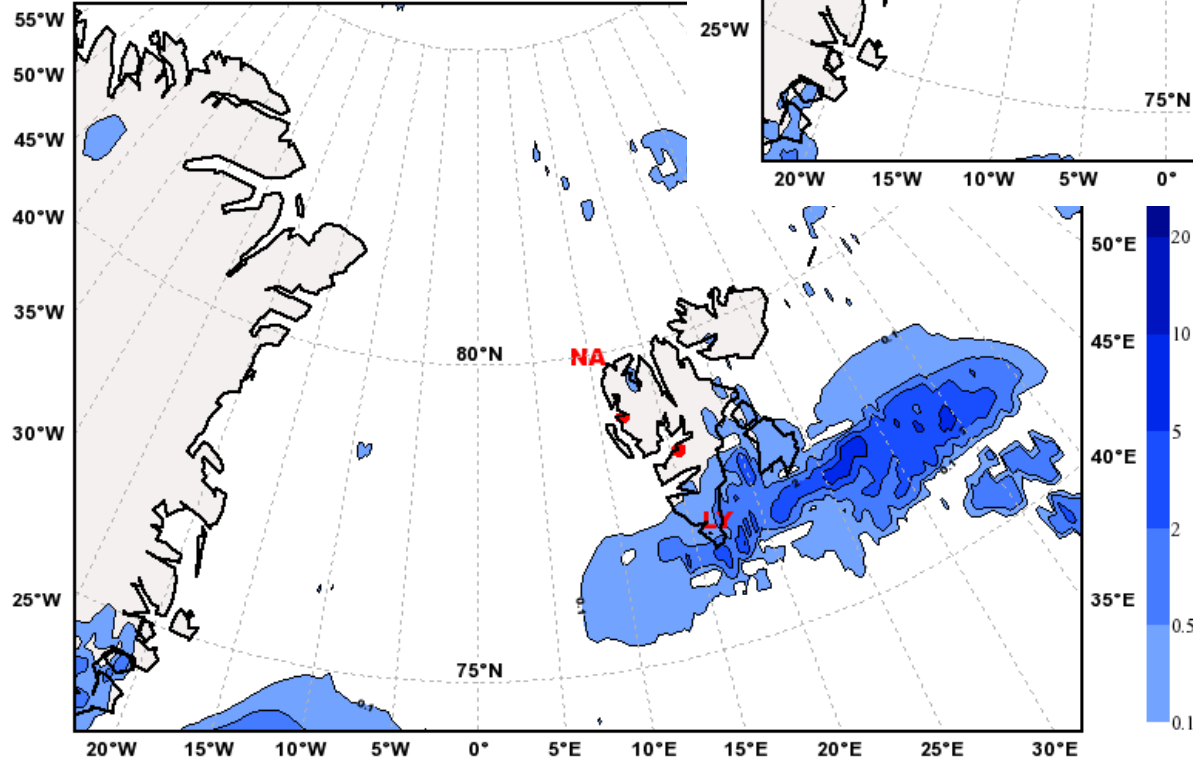
6-9 UTC

Total Precipitation [mm]  
Valid: Sun, 16 May 2010, 06-09 UTC (init: 20100515 00 UTC +033 h)



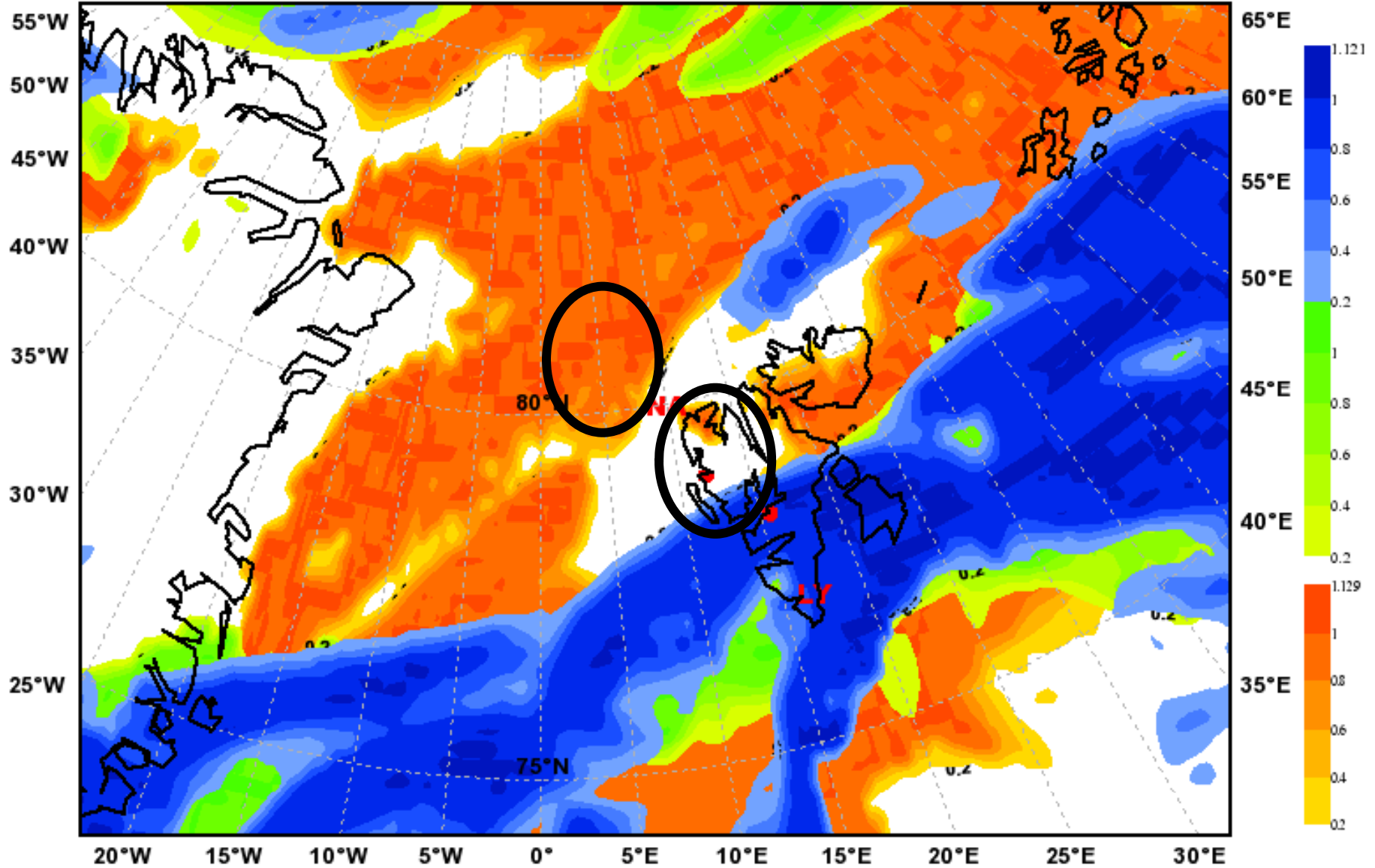
12-15 UTC

Total Precipitation [mm]  
Valid: Sun, 16 May 2010, 12-15 UTC (init: 20100515)

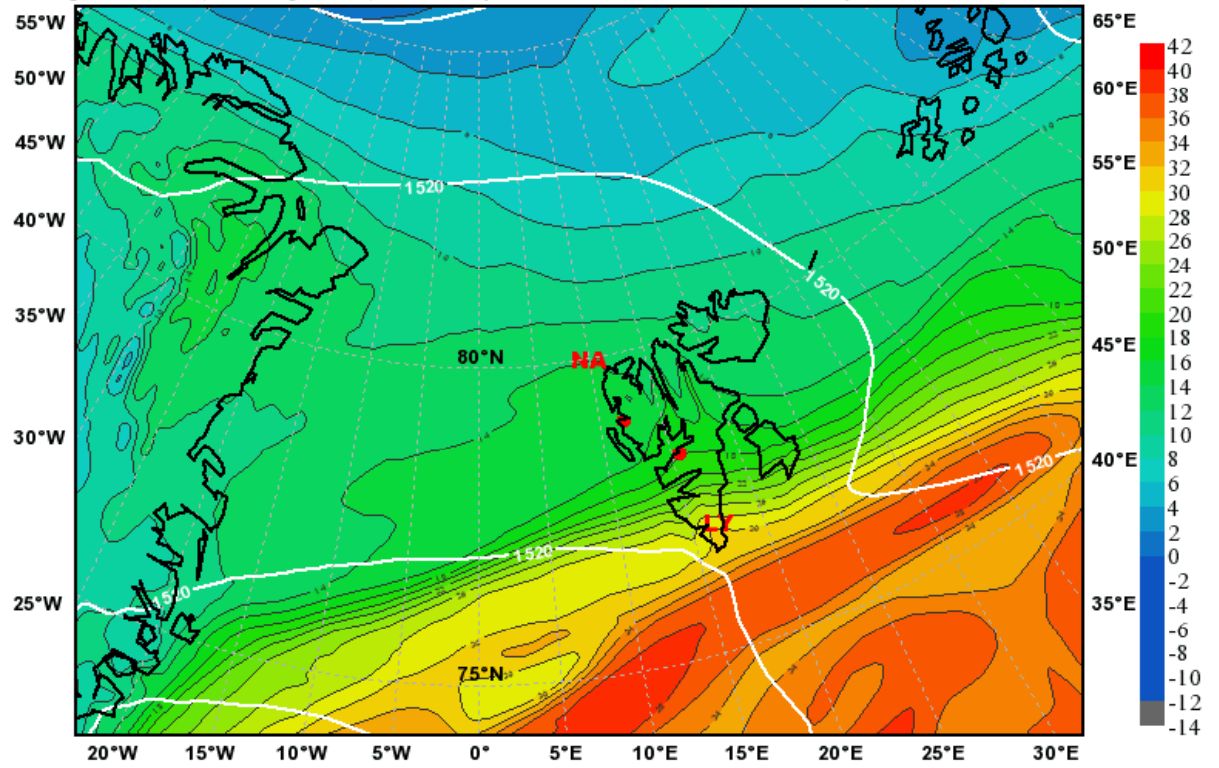


# Total Cloud Cover

valid: Sun, 16 May 2010, 12 UTC (init: 20100515 00 UTC +036 h)



Equivalent Potential Temperature [°C] & Geopot. Height [m] at 850hPa  
Valid: Mon, 17 May 2010, 09 UTC (init: 20100515 00 UTC +057 h)



Total Cloud Cover

Valid: Mon, 17 May 2010, 09 UTC (init: 20100515 00

