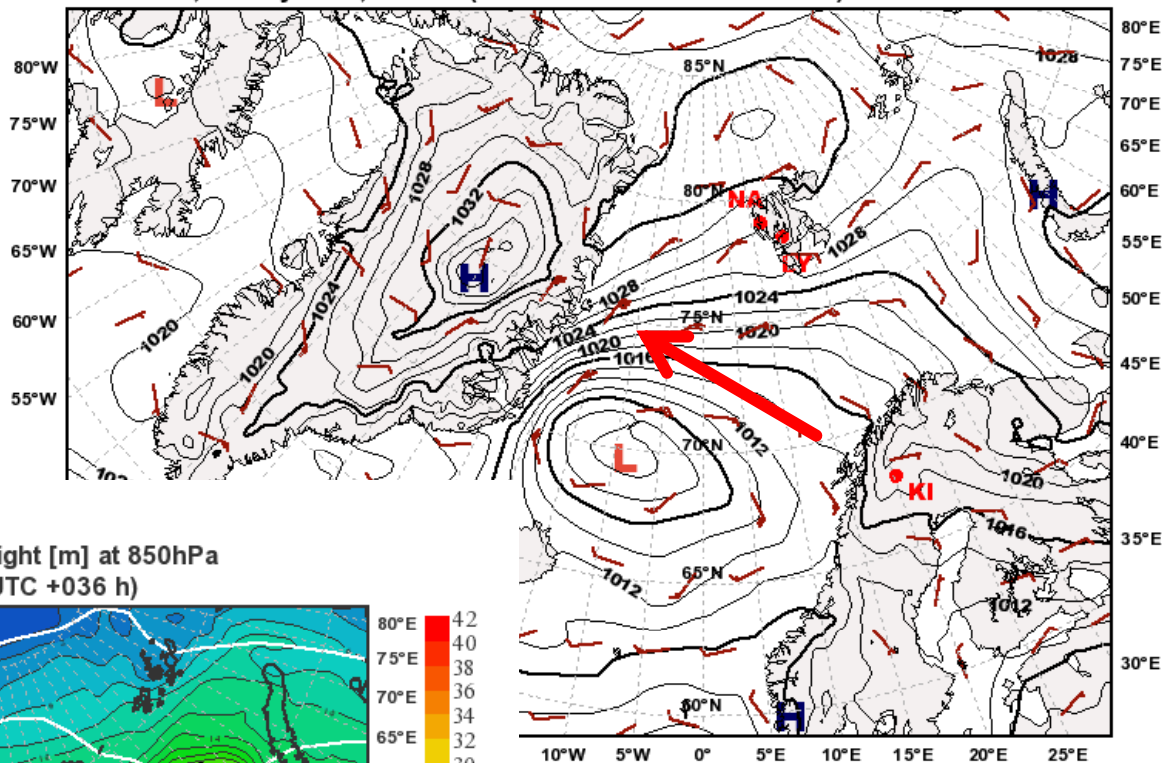


Debriefing and weather forecast 16 May 2010

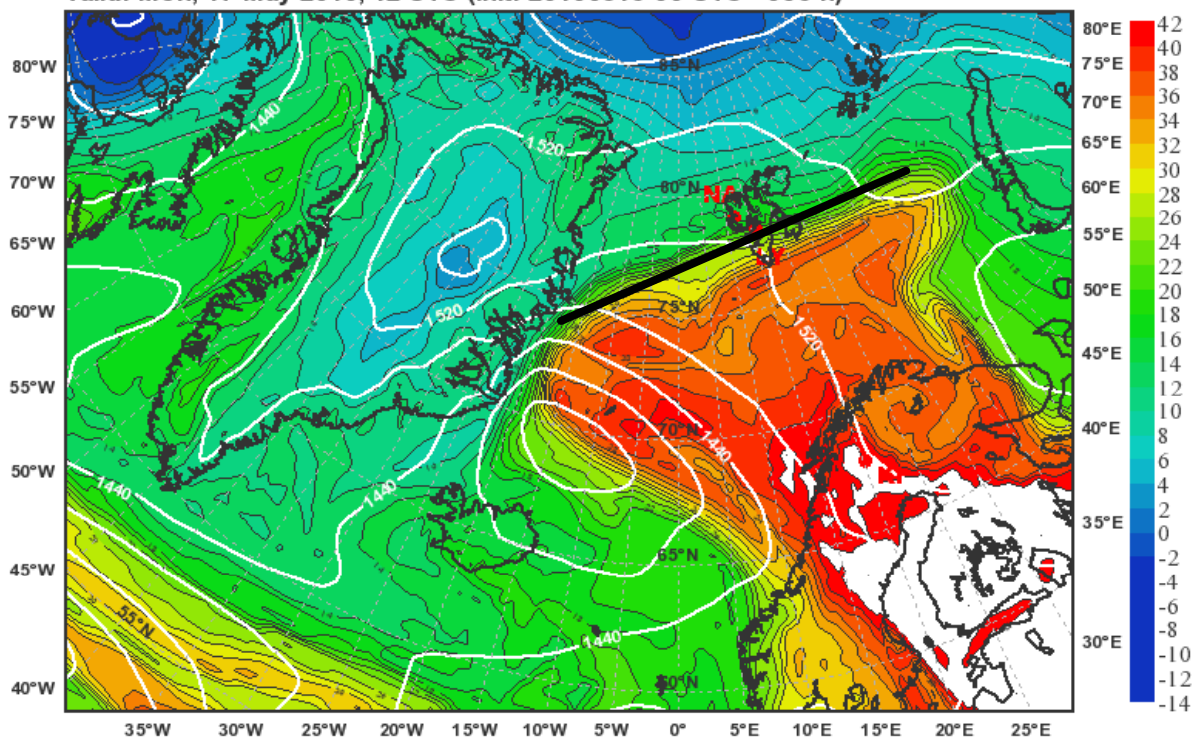


**Mon 17 May
12 UTC**

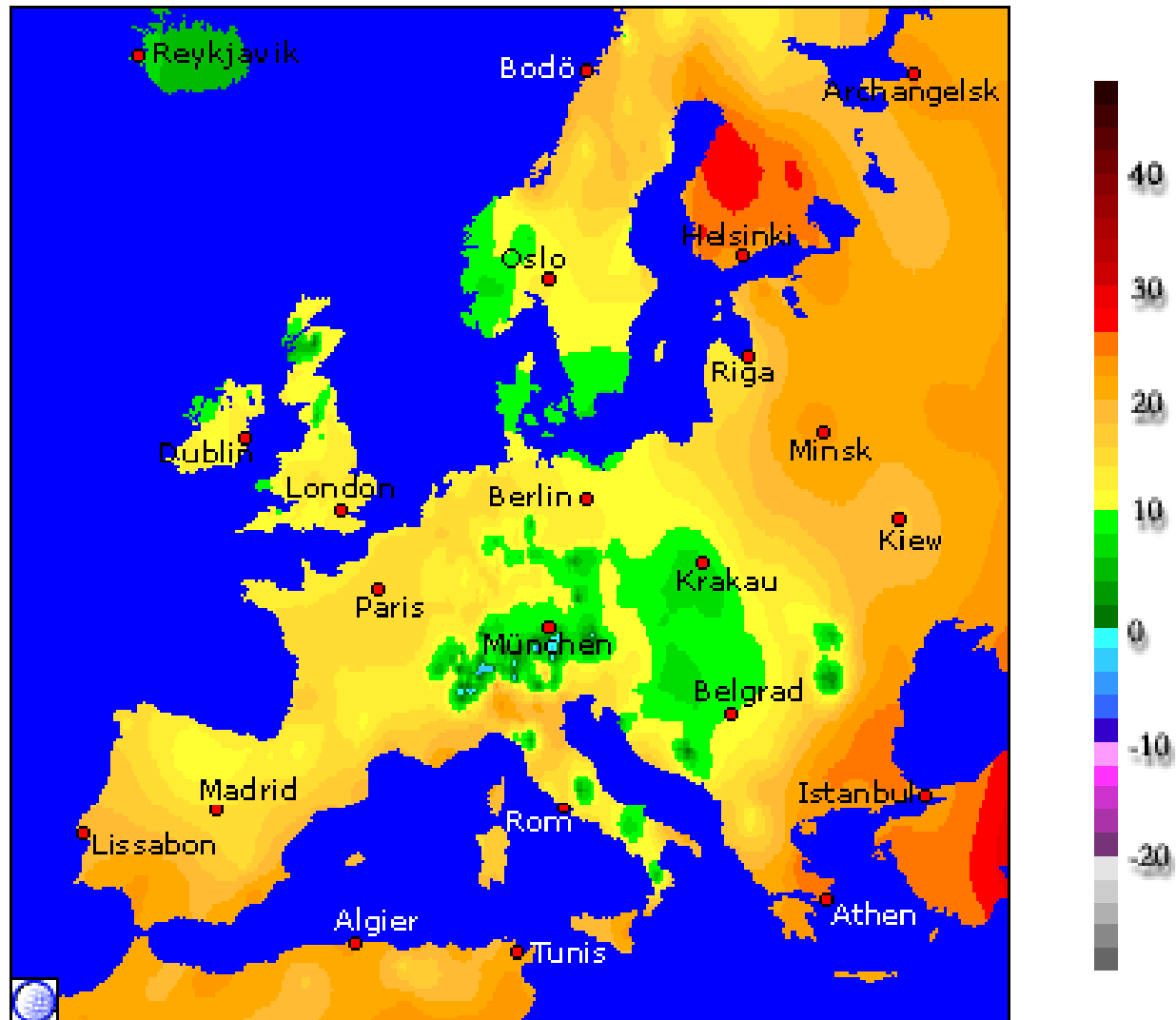
Mean Sea Level Pressure
valid: Mon, 17 May 2010, 12 UTC (init: 20100516 00 UTC +036 h)



Equivalent Potential Temperature [°C] & Geopot. Height [m] at 850hPa
valid: Mon, 17 May 2010, 12 UTC (init: 20100516 00 UTC +036 h)

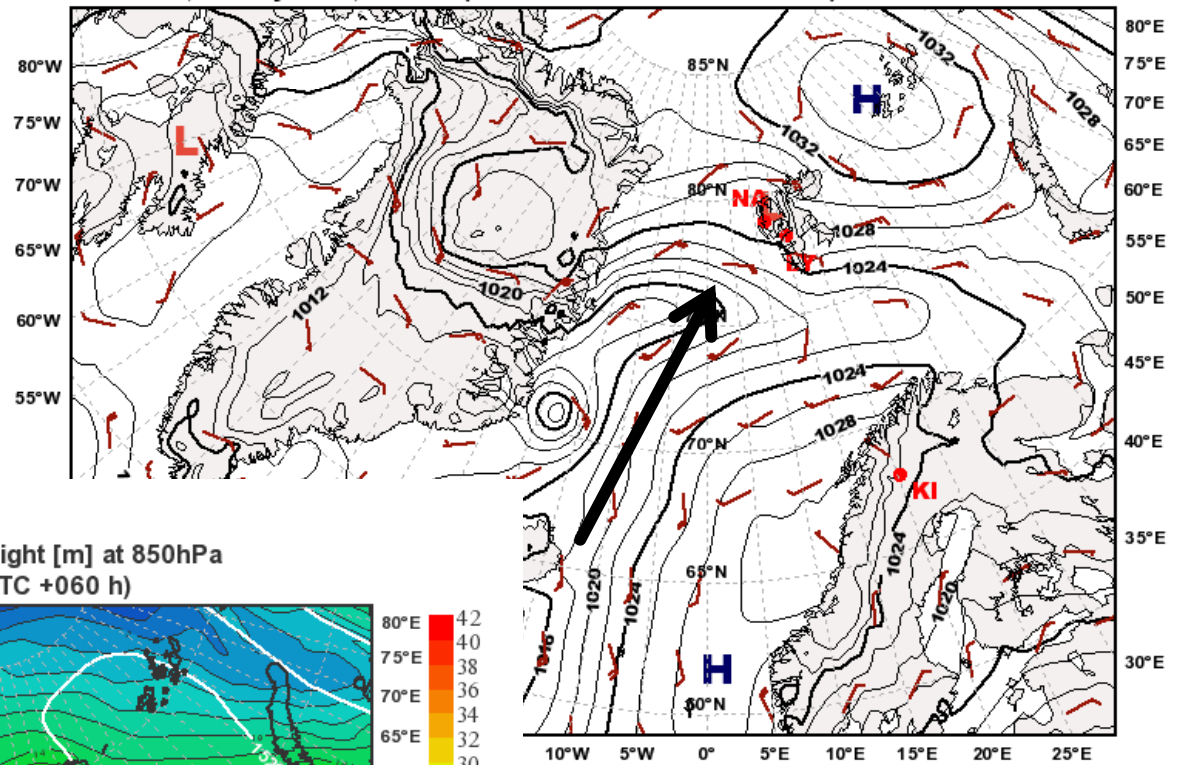


Today's temperatures

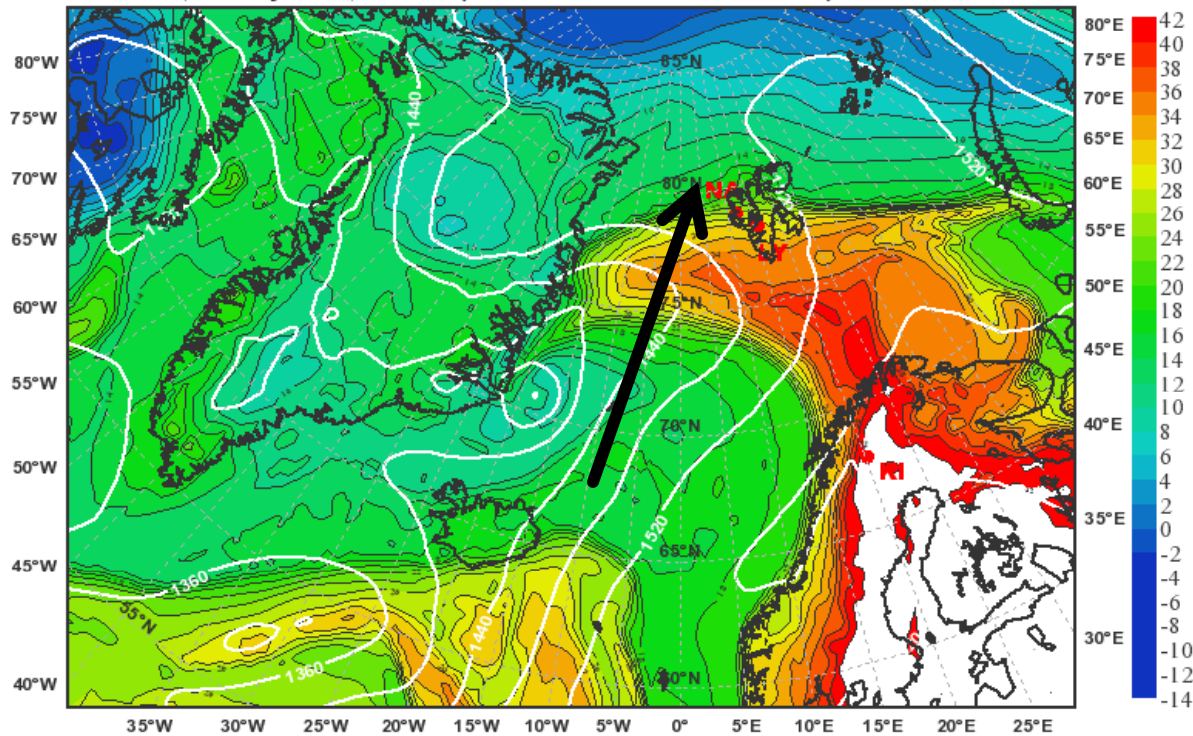


**Tue 18 May
12 UTC**

Mean Sea Level Pressure
valid: Tue, 18 May 2010, 12 UTC (init: 20100516 00 UTC +060 h)

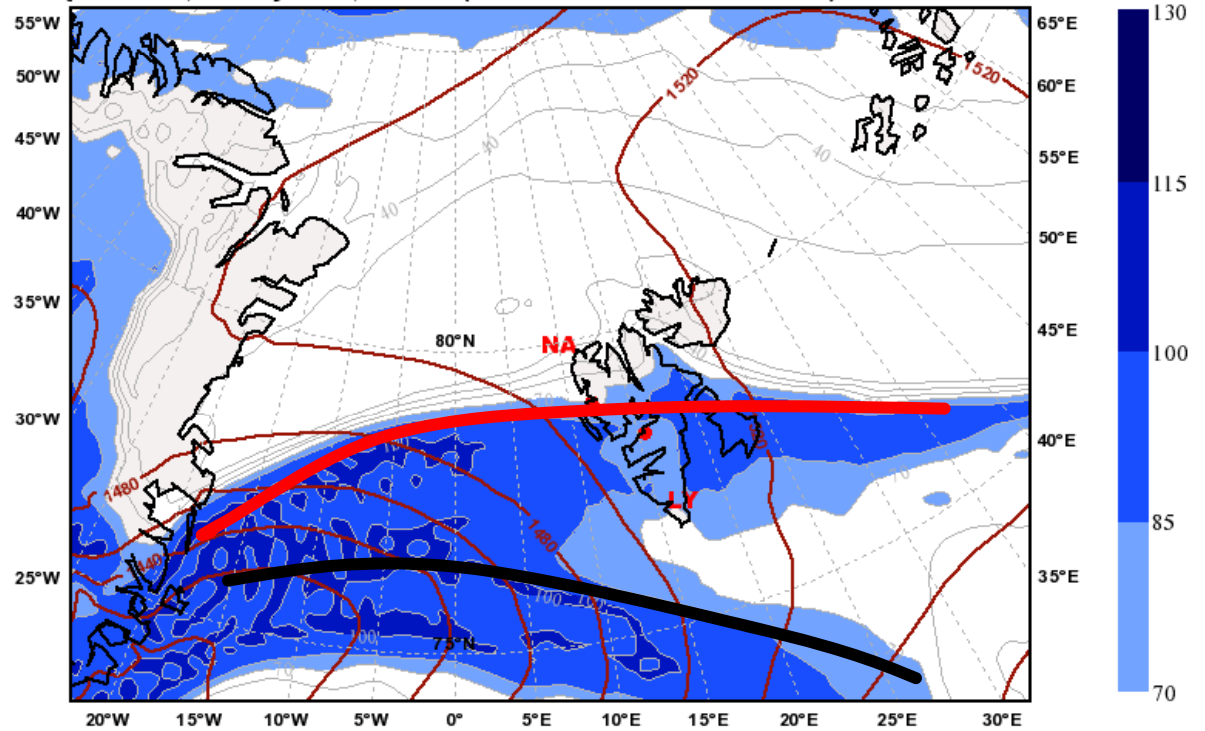


Equivalent Potential Temperature [°C] & Geopot. Height [m] at 850hPa
valid: Tue, 18 May 2010, 12 UTC (init: 20100516 00 UTC +060 h)

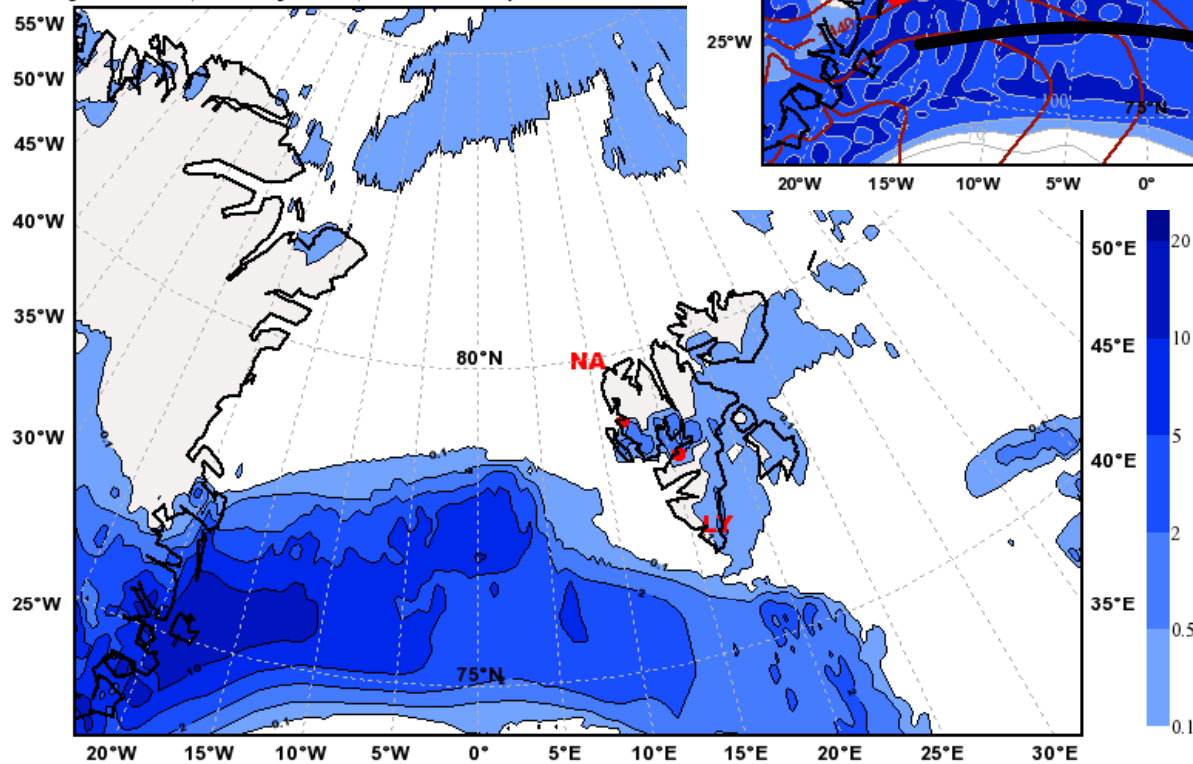


**Tue 18 May
12 UTC**

Relative Humidity [%] and Geopotential Height [m] at 850hPa
Valid: Tue, 18 May 2010, 12 UTC (init: 20100516 00 UTC +060 h)

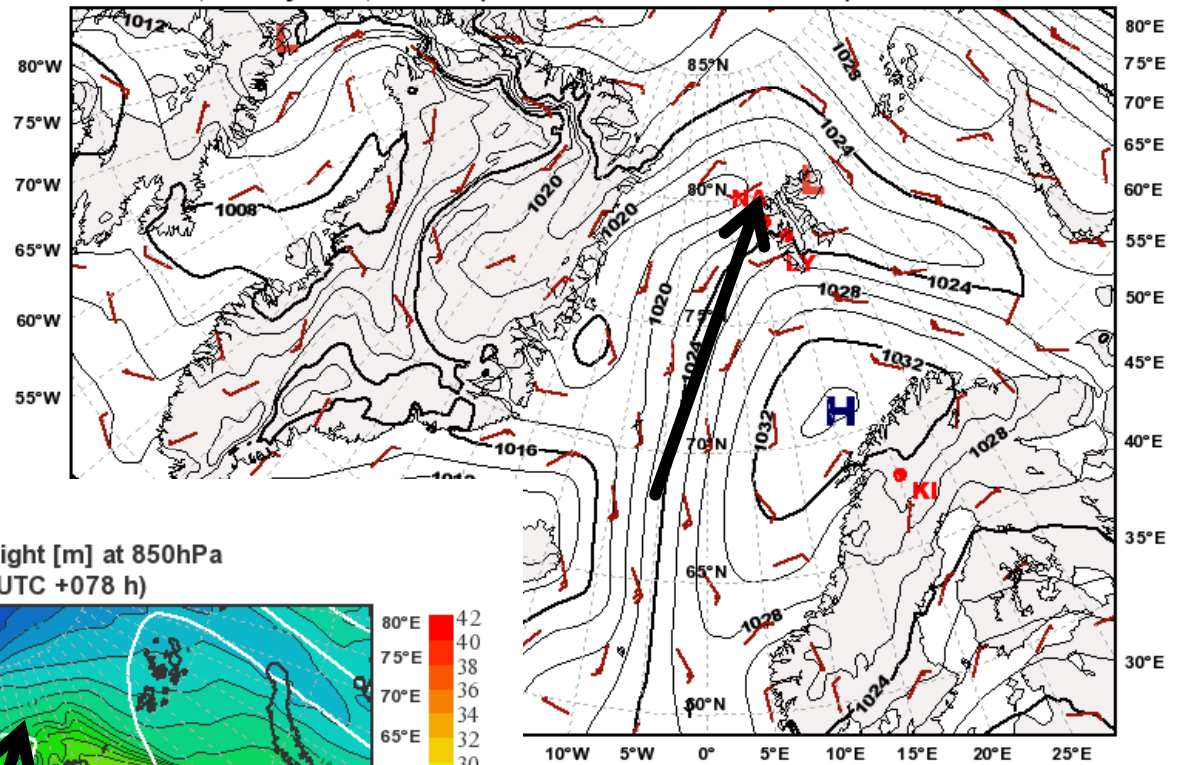


Total Precipitation [mm]
Valid: Tue, 18 May 2010, 09-15 UTC (init: 20100516)

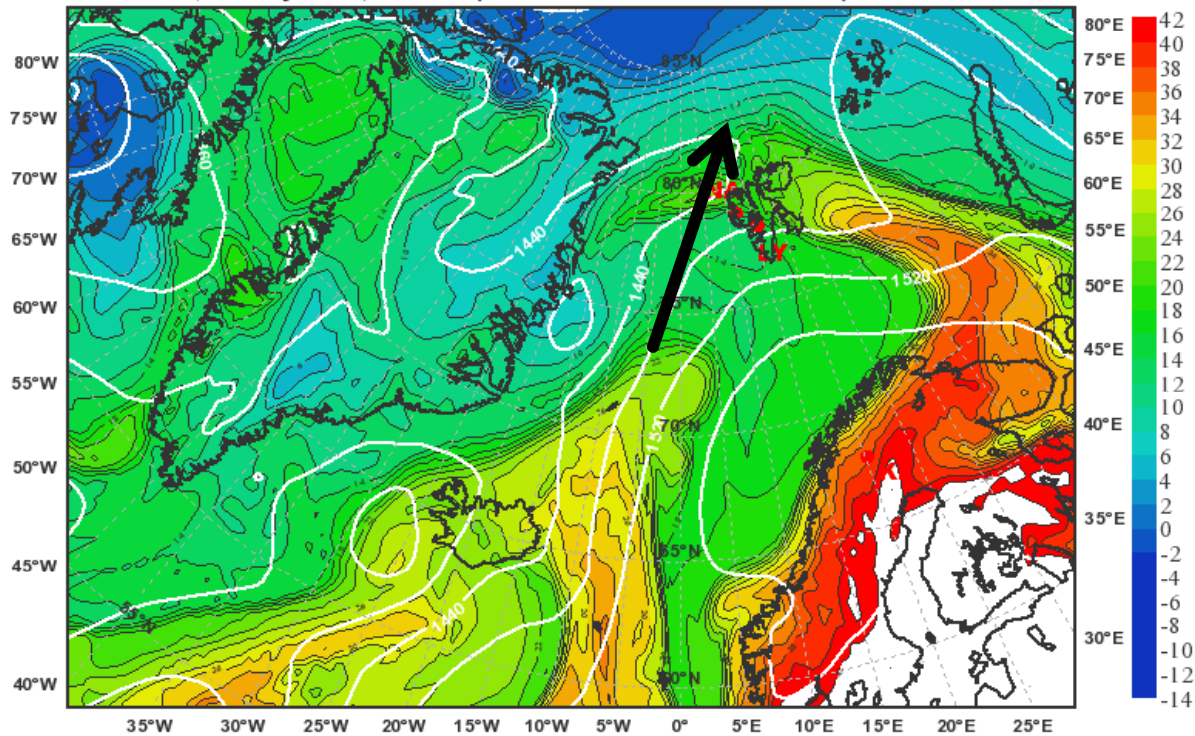


Wed 19 May
6 UTC

Mean Sea Level Pressure
valid: Wed, 19 May 2010, 06 UTC (init: 20100516 00 UTC +078 h)

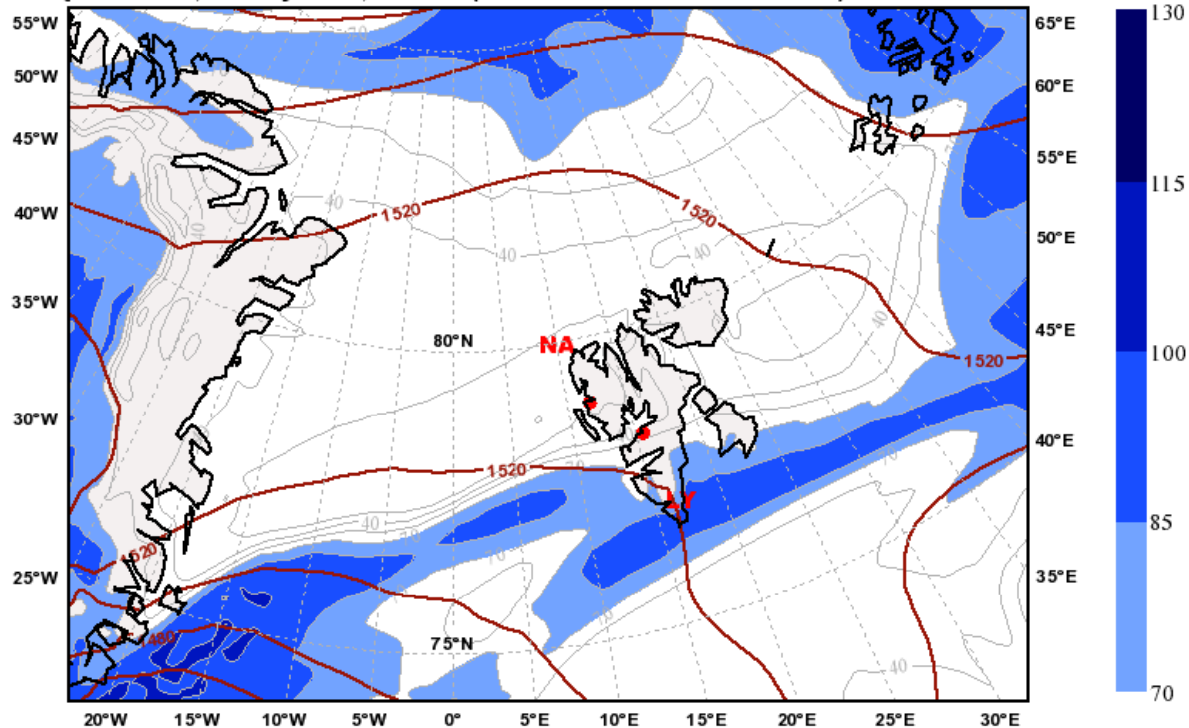


Equivalent Potential Temperature [°C] & Geopot. Height [m] at 850hPa
valid: Wed, 19 May 2010, 06 UTC (init: 20100516 00 UTC +078 h)

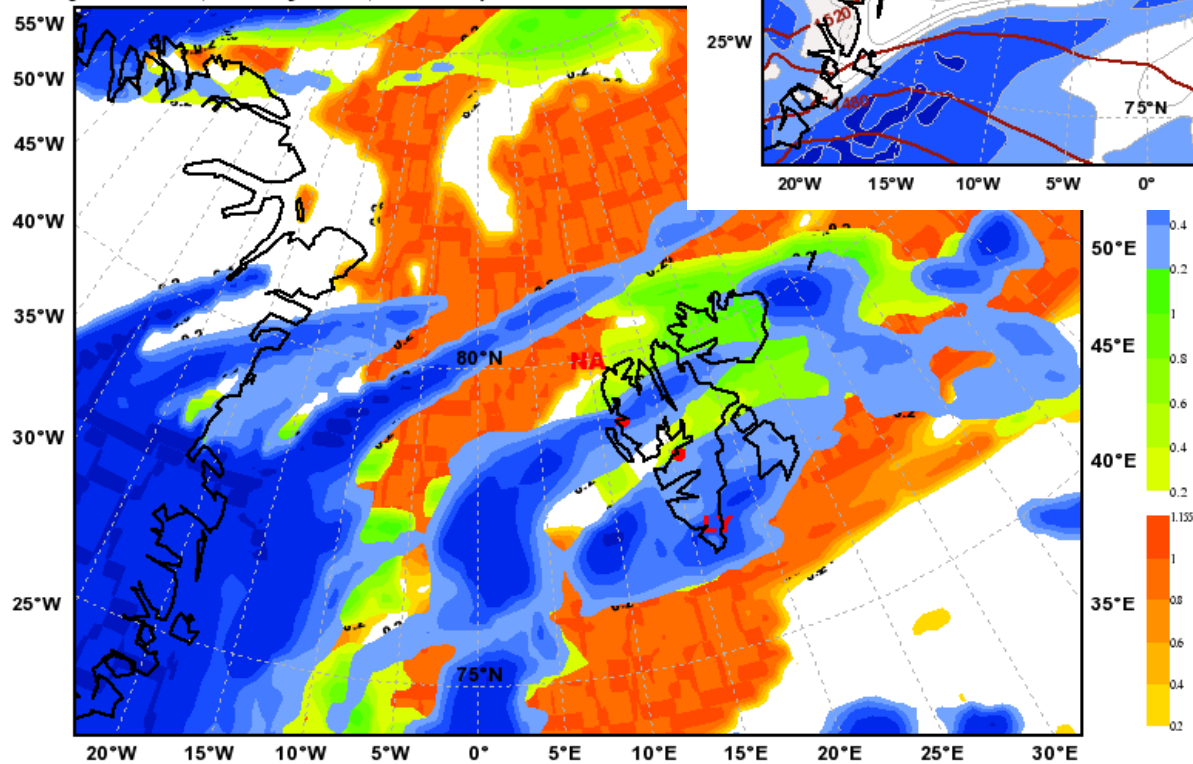


**Mon 17 May
12 UTC**

Relative Humidity [%] and Geopotential Height [m] at 850hPa
Valid: Mon, 17 May 2010, 12 UTC (init: 20100516 00 UTC +036 h)

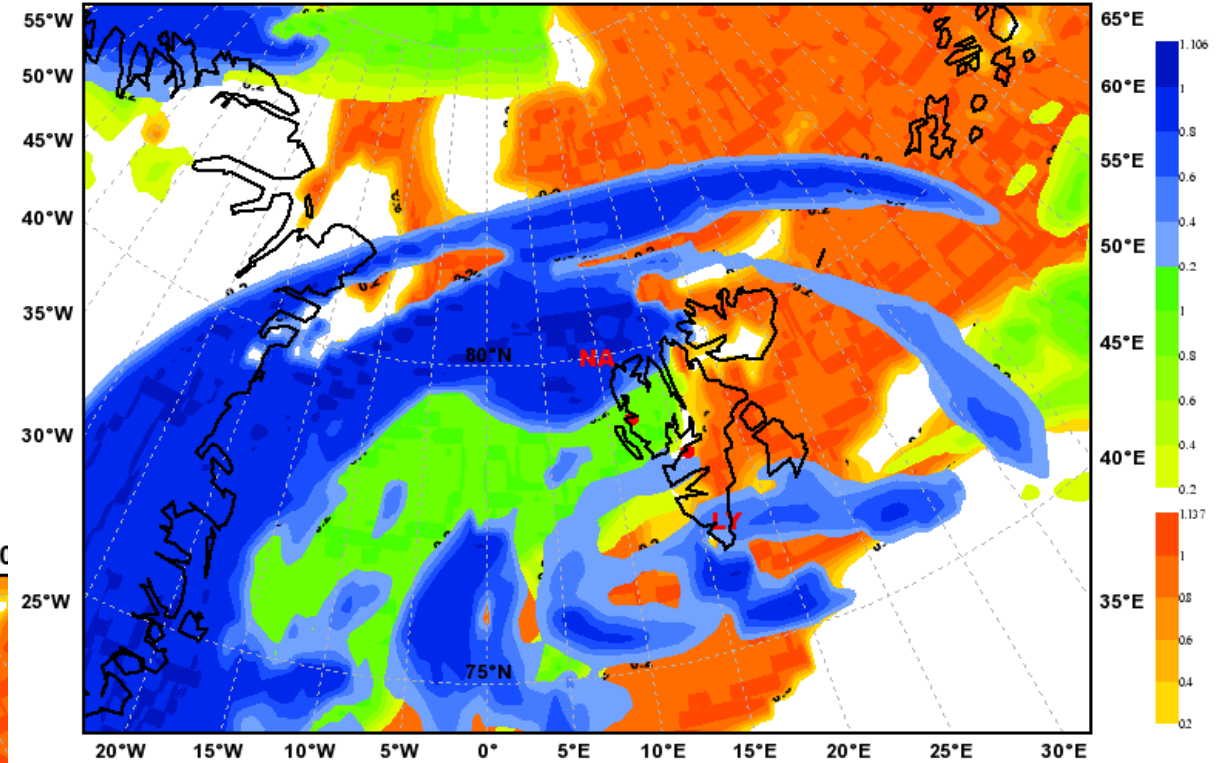


Total Cloud Cover
Valid: Mon, 17 May 2010, 12 UTC (init: 20100516 00 UTC +036 h)



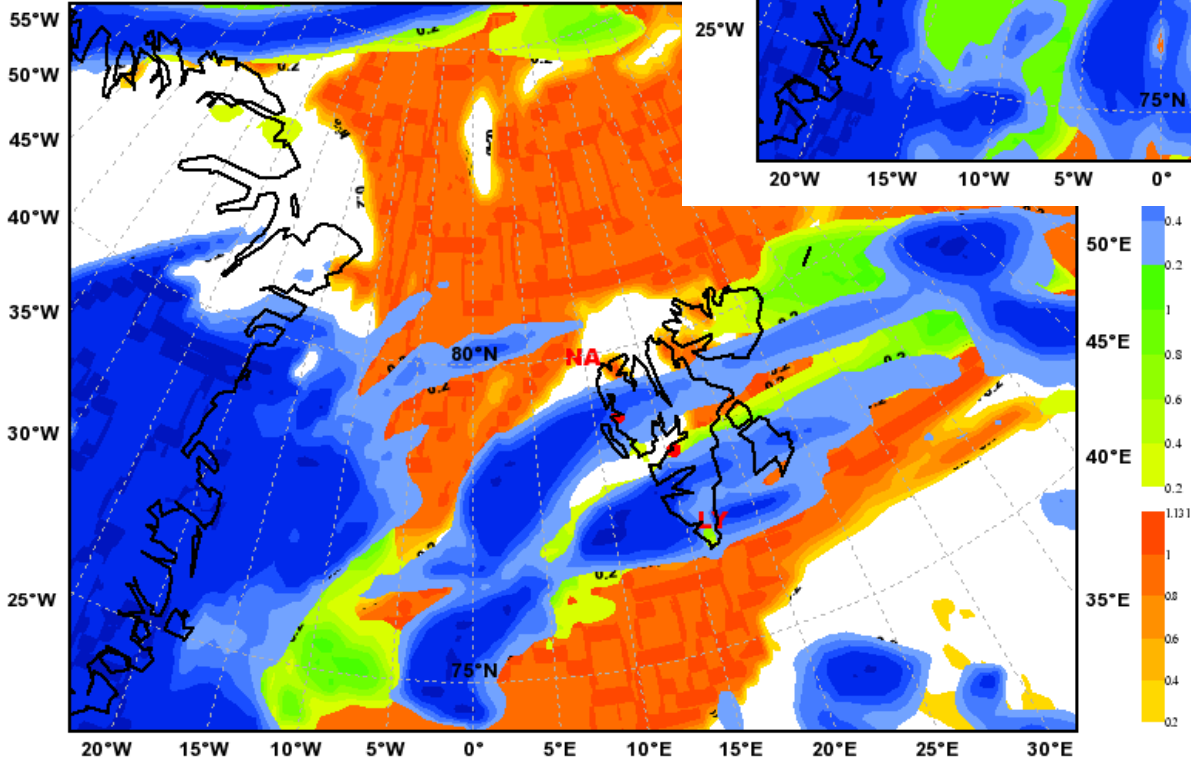
6 UTC

Total Cloud Cover
Valid: Mon, 17 May 2010, 06 UTC (init: 20100516 00 UTC +030 h)



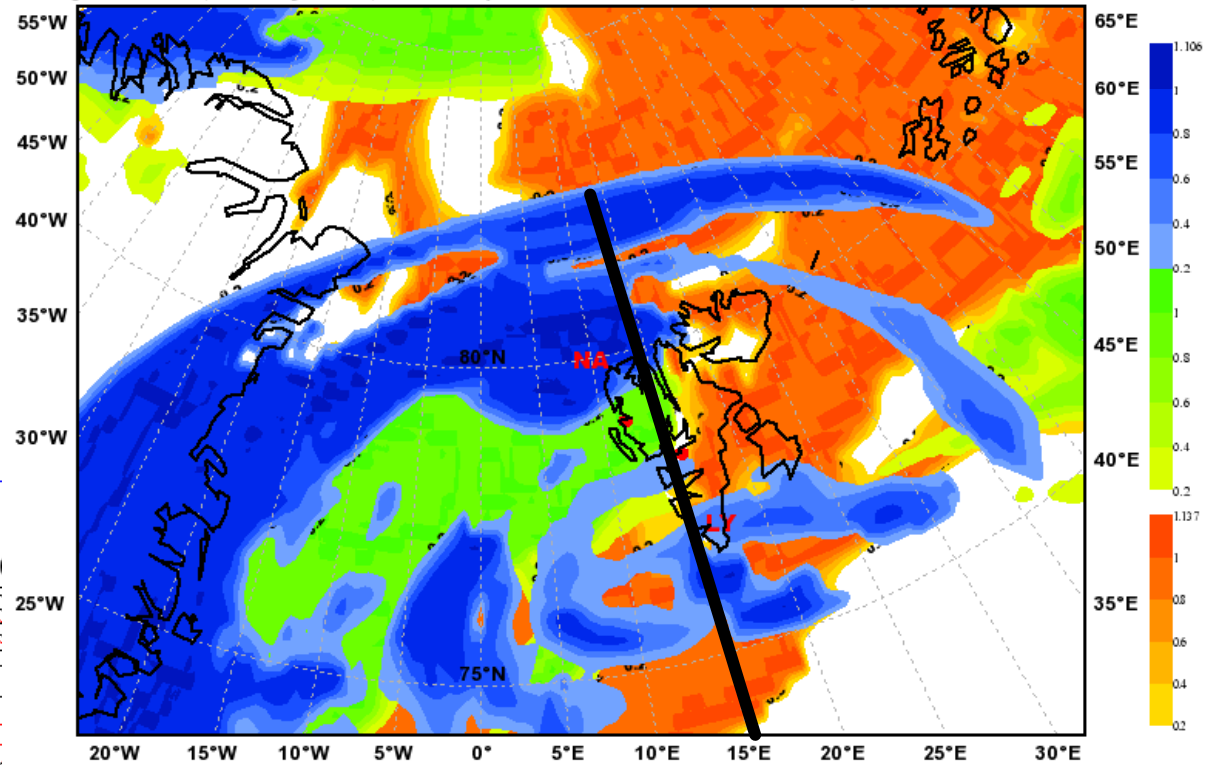
15 UTC

Total Cloud Cover
Valid: Mon, 17 May 2010, 15 UTC (init: 20100516 00 UTC +030 h)



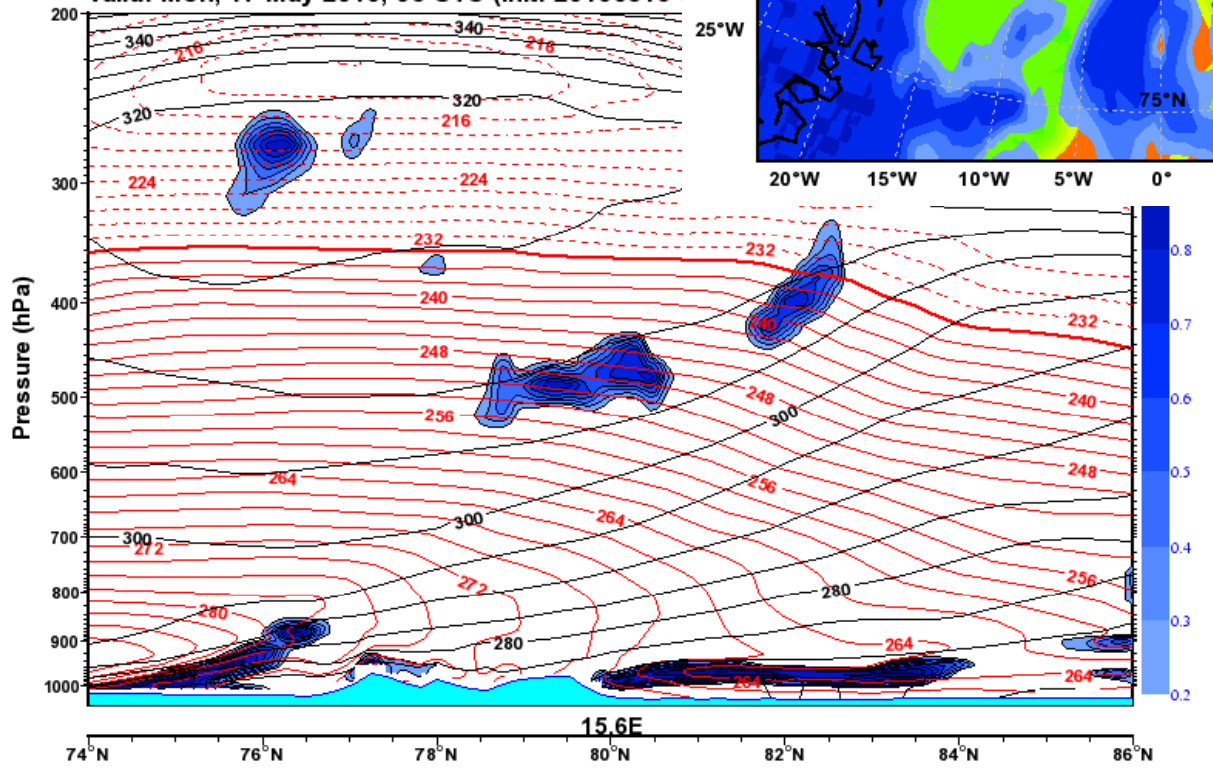
Total Cloud Cover

valid: Mon, 17 May 2010, 06 UTC (init: 20100516 00 UTC +030 h)



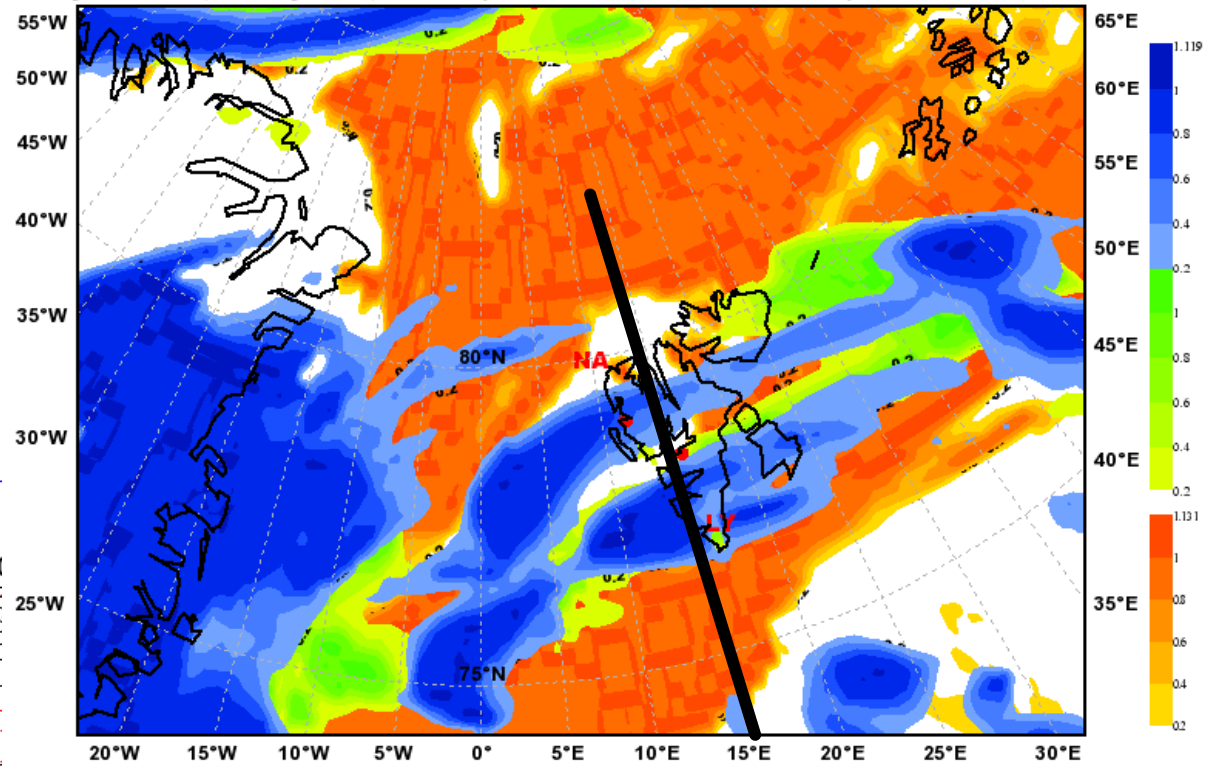
Vertical Section: Cloud Cover (with T [K] and TH)

valid: Mon, 17 May 2010, 06 UTC (init: 20100516



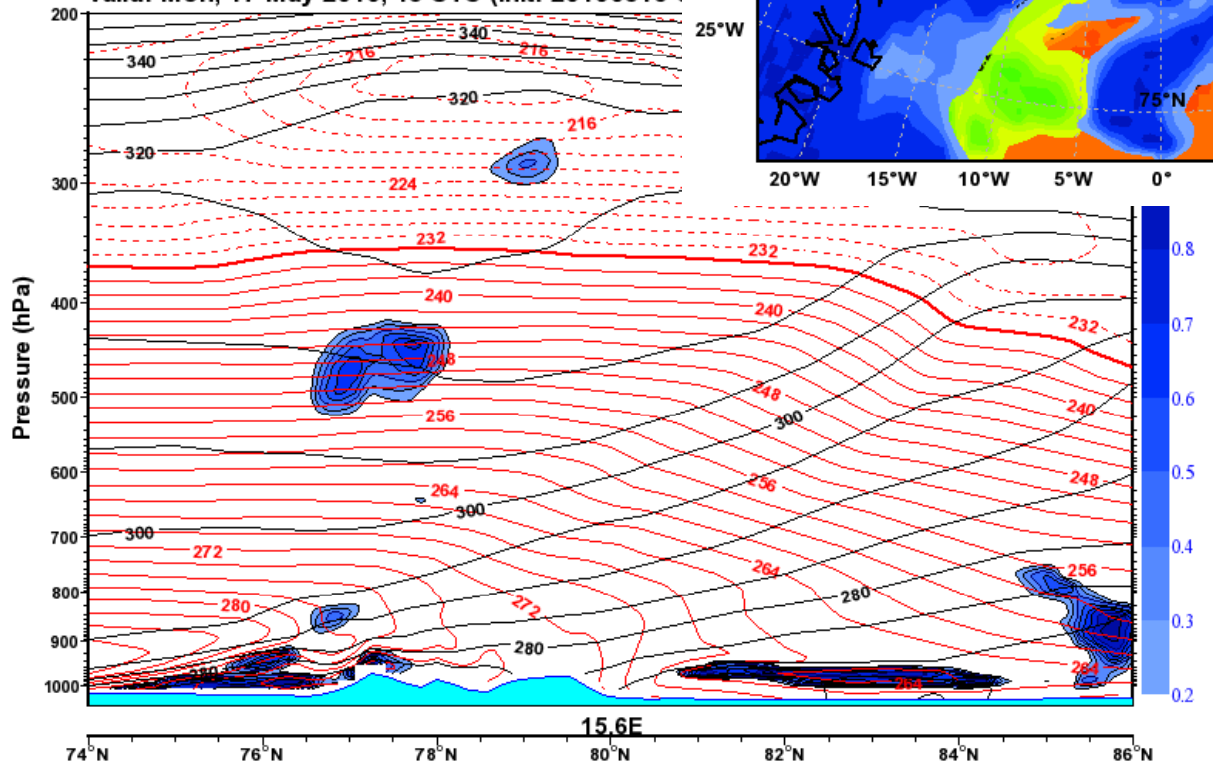
Total Cloud Cover

valid: Mon, 17 May 2010, 15 UTC (init: 20100516 00 UTC +039 h)



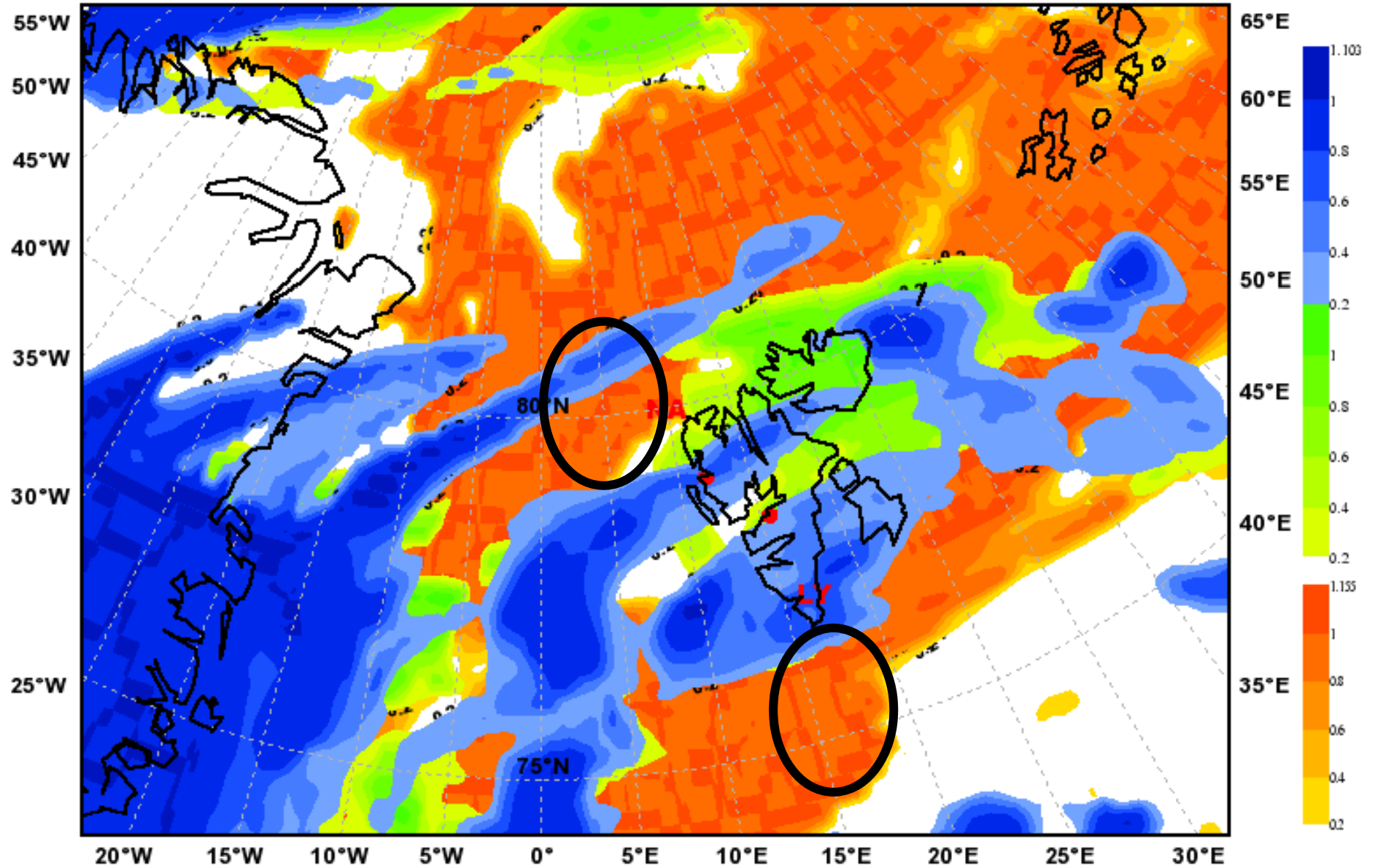
Vertical Section: Cloud Cover (with T [K] and TH)

valid: Mon, 17 May 2010, 15 UTC (init: 20100516 00 UTC +039 h)

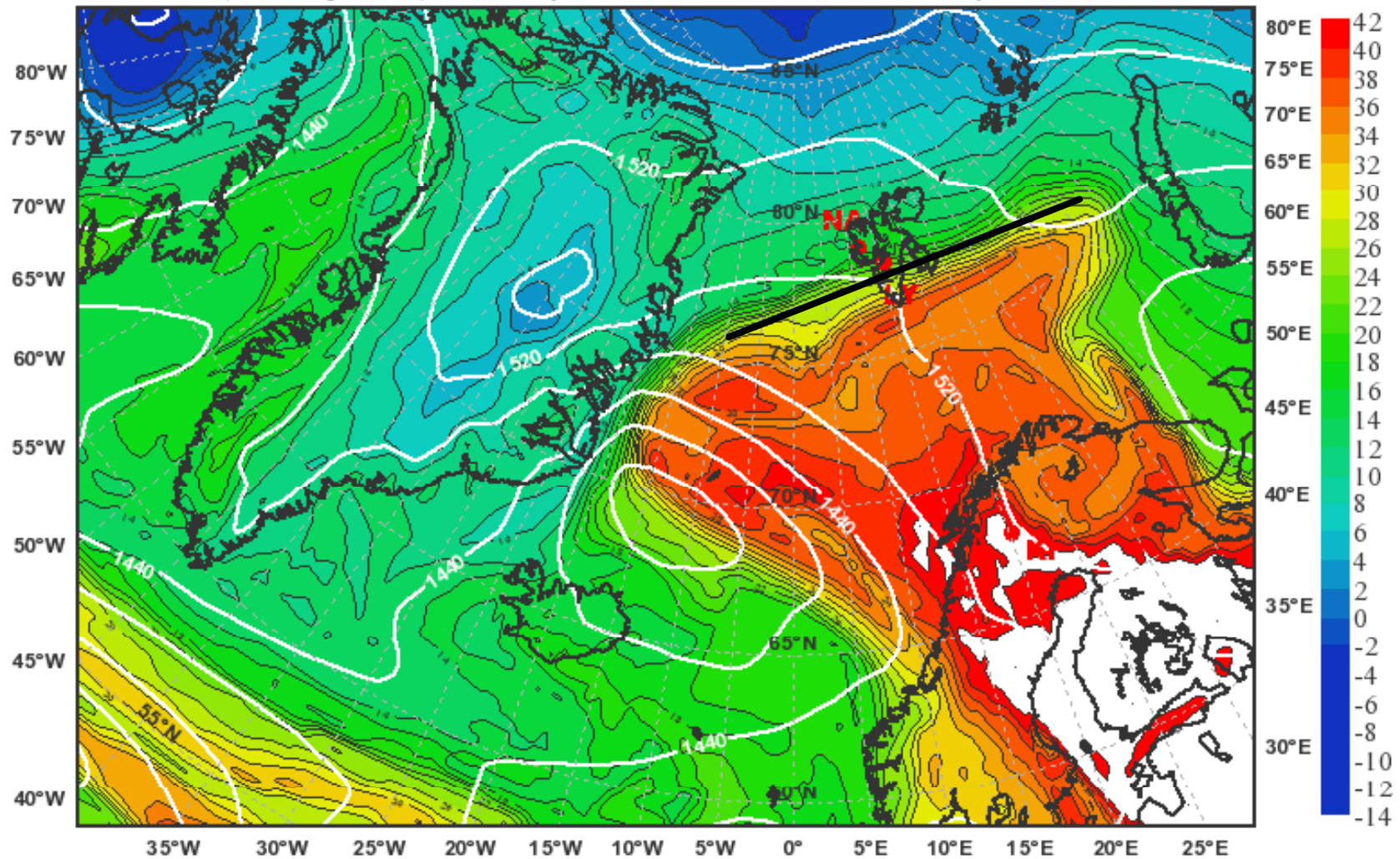


Total Cloud Cover

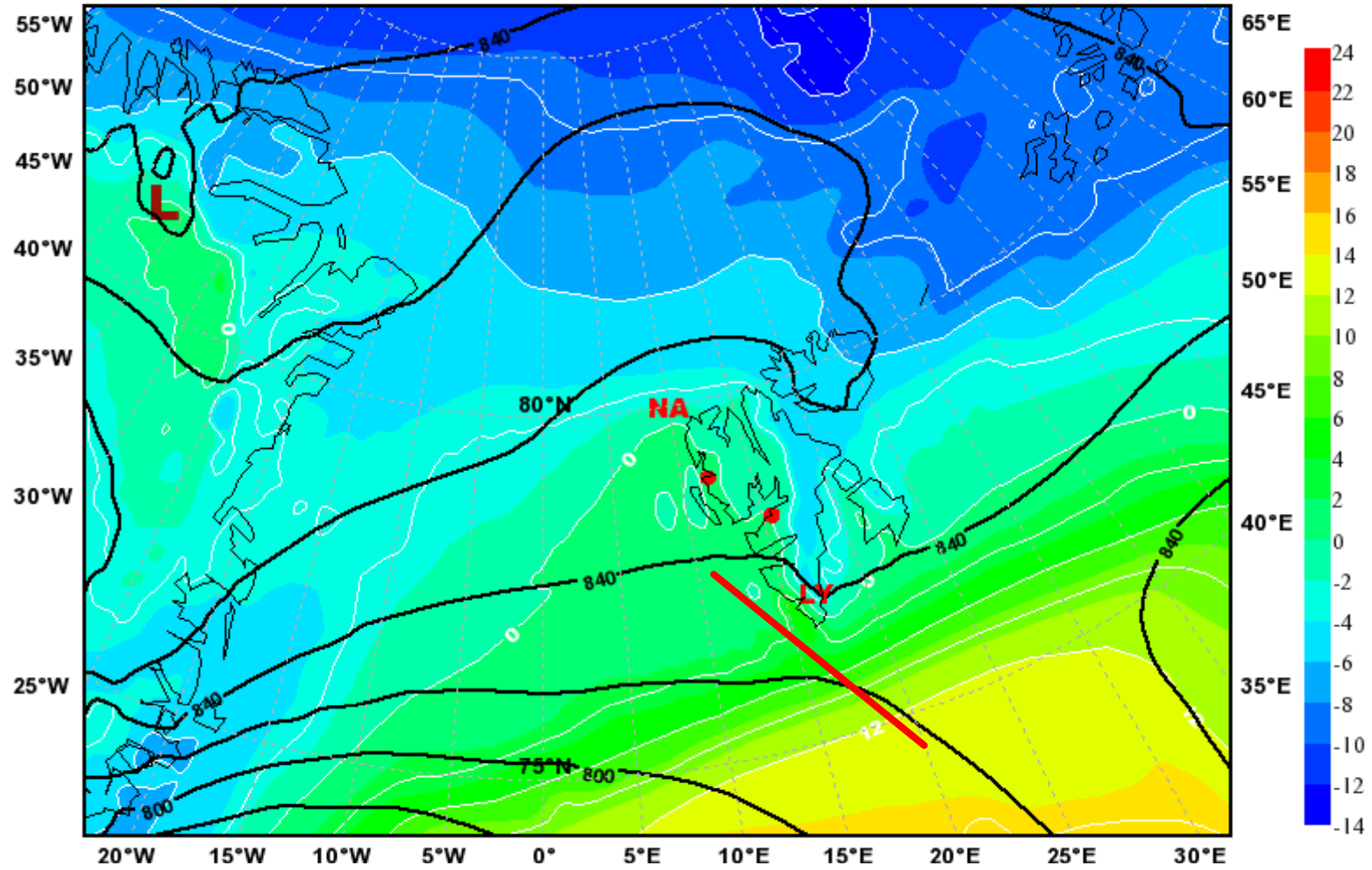
valid: Mon, 17 May 2010, 12 UTC (init: 20100516 00 UTC +036 h)



Equivalent Potential Temperature [°C] & Geopot. Height [m] at 850hPa
valid: Mon, 17 May 2010, 12 UTC (init: 20100516 00 UTC +036 h)

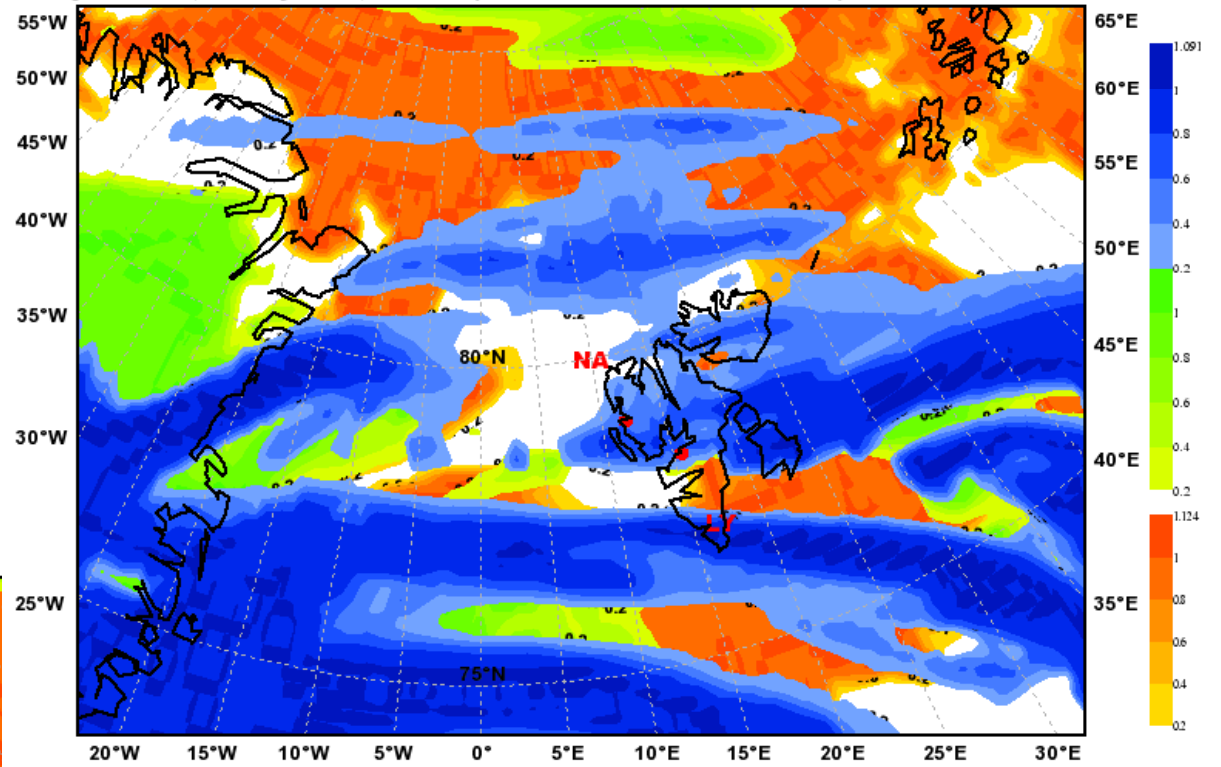


Temperature [°C] and Geopotential [m] at 925hPa
valid: Mon, 17 May 2010, 12 UTC (init: 20100516 00 UTC +036 h)



Tue 18 May

Total Cloud Cover
Valid: Tue, 18 May 2010, 09 UTC (init: 20100516 00 UTC +057 h)



Total Cloud Cover
Valid: Tue, 18 May 2010, 18 UTC (init: 20100516 00

